

FUND DESCRIPTION

Silverdale Fixed Tenure Fund January 2028 is a diversified portfolio of US dollar bonds, managed for target returns within fixed tenure and uses ring-fenced leverage to enhance investor returns.

FUND ADVANTAGES

- Fixed Maturity: Jan 2028
- No forex risk: 100% US dollars
- Strategy: Enhanced returns
- Leverage: Non-recourse to investors
- Stable dividend: Half-Yearly payout
- Transparency: 100% Portfolio disclosed
- Fund Tax Status: Zero tax on investment income

FUND INFORMATION

Fund	Silverdale Fixed Tenure Fund January 2028
ACRA Regn. No.	T20VC0123D-SF014
MAS SRS No.	23AMKH1094
Umbrella Fund	Silverdale Fund VCC
Domicile	Singapore
Fund Currency	US Dollar
Launch Date	Dec 2023
Maturity Date	Jan 2028 [^]
NAV Computation	Monthly
Subscription	Closed
Redemption	Monthly
Management Fee	0.70% p.a.
Dividend Frequency	Half-yearly
Previous Dividend Date	29 Nov 2024
Previous Dividend Amount	US\$ 3.75 per share
Next Dividend Date	30 May 2025**
Next Dividend Amount	US\$ 3.75 per share [^]

AT A GLANCE

Net Assets (AUM)	US\$ 24 million
Net Loan	US\$ 42 million
Gross Investments	US\$ 65 million
Number of Securities	49
Investment Grade Securities	60 %
Max Single Security Exposure	5 %

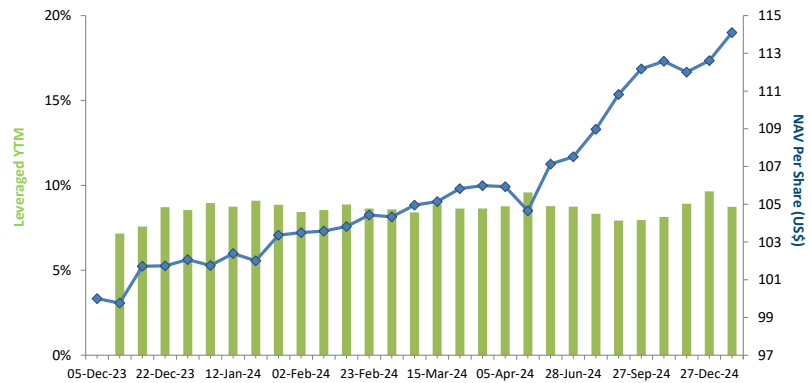
FUND DETAILS

ISIN (Distribution)	SGXZ12652996
ISIN (Accumulation)	SGXZ96344171
Bloomberg (Dist)	SIFJ28D SP Equity
Bloomberg (Acc)	SIFJ28A SP Equity
Initial Sales Charge	Up to 2%
Exit Load	NIL
Contingent Load	5% before maturity [†]

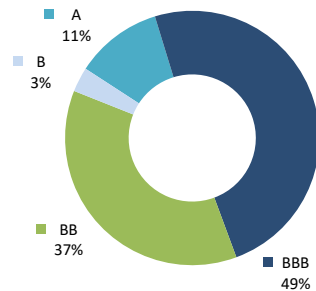
Silverdale Fixed Tenure Fund January 2028 is a target return fixed tenure bond fund. During the month ended 31st January 2025, the Fund NAV increased by 1.31% to US\$ 106.28 (previous month: US\$ 104.91). The Fund reported portfolio yield (post-leverage) of 8.74% p.a. (previous month: 9.64% p.a.), and average duration of 1.92 years (previous month: 1.91 years).

PORTFOLIO DASHBOARD

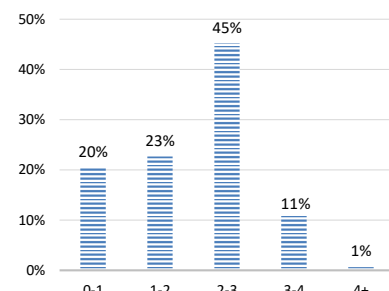
Accumulation NAV US\$	114.0976	Distribution NAV US\$	106.2837
PERFORMANCE (net of fees)		FUND STATISTICS	
Year to Date	1.31 %	Portfolio Yield to Maturity	6.17 %
Trailing 1 month	1.31 %	Leveraged Yield to Maturity	8.74 %
Trailing 3 months	1.35 %	Average Coupon	5.38 %
Trailing 12 months	10.39 %	Average Duration	1.92 years
Since Inception (5 Dec 2023)	14.10 %	Total Dividend Paid	US\$ 7.50



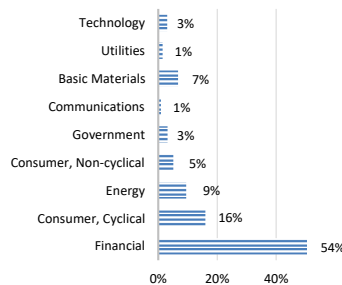
NAV and LEVERAGED YTM (net of fees)



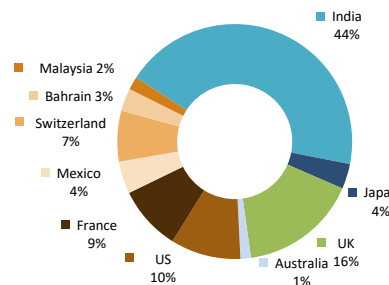
RATING PROFILE¹



PORTFOLIO DURATION²



SECTORAL EXPOSURE³



GEOGRAPHICAL EXPOSURE⁴

FUND MANAGER

Silverdale Capital Pte Ltd

Licensed and Regulated by Monetary Authority of Singapore (UEN# 200820921K)

8 Temasek Boulevard, #35-02 Suntec Tower-3, Singapore: 038988 • Tel: +65 6835 7130 • Email: IR@SilverdaleGroup.com



FUND MANAGEMENT DETAILS

THE FUND

Silverdale Fixed Tenure Fund January 2028 is the Sub-Fund of Silverdale Fund VCC (UEN#T20VC0123D), which is an umbrella fund under the Variable Capital Companies Act of Singapore.

CUSTODIAN / PRIME BROKER

Standard Chartered Bank (Singapore) Ltd
Nomura Singapore Limited

FUND ADMINISTRATOR

NAV Fund Services (Singapore)

Private Limited

9 Raffles Place, #26-01 Republic Plaza
Singapore 048619

Tel: +65 6856 7605

Email: VCC@SilverdaleGroup.com

RISK PROFILE

NAV per Share can go up or down and the amount invested in the Fund is at risk. The Fund uses leverage and derivatives for hedging and/or as part of its investment strategy which entails additional risks and costs. For further details, please refer to the Offering Documents.

PORTFOLIO HOLDINGS⁴

Name	Weight %	Name	Weight %
Shriram Finance Ltd	4.7 %	Gohl Capital Ltd	1.8 %
Periama Holdings Llc/De	4.5 %	Muthoot Finance Ltd	1.6 %
Hpcl-Mittal Energy Ltd	4.4 %	Ford Motor Credit Co Llc	1.6 %
Phoenix Grp Hld Plc	4.1 %	Jaguar Land Rover	1.5 %
Ubs Group Ag	3.8 %	Hsbc Holdings Plc	1.5 %
Cash	3.5 %	India Vehicle Finance	1.5 %
Ubs Group Ag	3.2 %	Shriram Finance Ltd	1.5 %
Societe Generale	3.2 %	Petroleos Mexicanos	1.5 %
Lloyds Banking Group Plc	3.1 %	Adani Trans Step-One	1.5 %
Manappuram Finance Ltd	3.1 %	Societe Generale	1.5 %
Ca Magnum Holdings	3.0 %	Tml Holdings Pte Ltd	1.4 %
Adani Ports And Special	2.8 %	Jaguar Land Rover	1.2 %
Bnp Paribas	2.8 %	Network I2I Ltd	0.9 %
Kingdom Of Bahrain	2.4 %	Aust & Nz Banking	0.8 %
Standard Chartered Plc	2.4 %	Petroleos Mexicanos	0.8 %
Nissan Motor Acceptance	2.3 %	Societe Generale	0.8 %
Shriram Finance Ltd	2.3 %	Ford Motor Credit Co Llc	0.8 %
Muthoot Finance Ltd	2.3 %	Axis Bank Gandhinagar	0.7 %
Biocon Biologics Global	2.3 %	Bnp Paribas	0.7 %
Piramal Capital & Housin	2.3 %	Kingdom Of Bahrain	0.7 %
Upl Corp Ltd	2.2 %	Ford Motor Credit Co Llc	0.7 %
Petroleos Mexicanos	2.1 %	Aust & Nz Banking	0.7 %
Nissan Motor Acceptance	2.1 %	Hpcl-Mittal Energy Ltd	0.6 %
Ford Motor Credit Co Llc	2.1 %	Jaguar Land Rover	0.4 %
Nationwide Bldg Society	1.9 %	Total	100.0 %

PORTFOLIO UPDATE

During the month ended 31st January 2025, the Fund NAV increased by 1.31% as against the Bloomberg Emerging Market USD Corp and Quasi 1-3 Yr Index which increased by 0.89%. The increase in NAV was primarily due to Indian, Swiss and British credits. Sectorially, Financial, Consumer Non-Cyclical and Consumer Cyclical were the key contributors. The increase in NAV was partly offset by the mark-to-market losses from interest-rate swaps (IRS) as market priced in more rate cuts.

HOW TO INVEST

Please ask your private bank/distributor to subscribe to Silverdale Fixed Tenure Fund January 2028 as per terms of the Offering Documents (quoting the relevant ISIN). Should you seek any support, please Email the Fund Administrator at VCC@SilverdaleGroup.com, or Call the Fund Manager at +65 6835 7130

FUND MANAGER

Silverdale Capital Pte Ltd

Licensed and regulated by Monetary Authority of Singapore (UEN# 200820921K)

8 Temasek Boulevard, #35-02 Suntec Tower-3, Singapore: 038988

Tel: +65 6835 7130 • Email: IR@SilverdaleGroup.com



Visit our Website



RISK FACTORS

Interest Rate Risk: The increase (fall) in value of fixed income securities with fall (increase) in interest rate. **Credit Risk:** The ability of the issuer to redeem the bonds (or other securities) on maturity. **Liquidity Risk:** The ability to sell a bond before its redemption. **Counterparty Risk:** The risk due to failure of the counterparty dealt with. **Country Risk:** The investment strategy is subject to the risks relating to the geographical, political, economic and social issues of the country of the Issuer, and to a lesser extent that of United States. **Leverage/Derivatives Risk:** Disproportionately large change in value of securities due to relatively small change in determinant. Please read Section X, risk factors detailed in the Offering Documents before investing.

DISCLAIMER

The above commentary does not provide a complete analysis of every material fact regarding the market, industry, security, portfolio or Silverdale Fixed Tenure Fund January 2028 ("FTFJ28"). It is not a recommendation to buy or sell any security nor an investment advice. The portfolio holdings, opinions and information may change without notice and the actual results may differ from the said opinions and estimates. The contents of this document, including any narrative does not constitute an offer to sell or a solicitation of any offer to buy the units or shares in FTFJ28, or any other Sub-Fund or class of the of Silverdale Fund VCC or any of the funds managed or advised by Silverdale Capital Pte Ltd., and is strictly for information only. The distribution of the shares of the Fund may be restricted in certain jurisdictions. It is the responsibility of any person or persons in possession of this Factsheet to inform themselves of, and to observe any such restrictions, all applicable laws and regulations of any relevant jurisdiction, including of any applicable legal requirements, exchange control regulations and taxes in the countries of their respective citizenship, residence or domicile. Any subscription for units or shares must be made solely on the basis of the Silverdale Fund VCC's Private Placement Memorandum, Class Supplement of FTFJ28 and Subscription Documents (together "the Offering Documents"). Past performance is not an indicator of future performance. The Fund uses leverage and invests in financial derivative instruments. Please refer to the Offering Documents for Risk Factors. This document is written for the benefit of and being communicated only to Accredited Investors or Institutional Investors as defined under the Securities and Futures Act (Cap. 289) of Singapore. Nothing in this document is intended to constitute legal, tax, securities or investment advice or opinion regarding the appropriateness of any investment; or a solicitation for any product or service. Please seek opinion from independent professional adviser before taking any decision based on this document. The NAV performance is computed taking: 1 month = 4 weeks, 3 months = 13 weeks, 6 months = 26 weeks, 9 months = 39 weeks, and 1 Year = 52 weeks. (*) Launched on 31 May 2024 at applicable NAV of 103.3795; (**) Assuming to be Business Day; (*) Indicative; (1) Minimum of US\$ 5,000; (1), (2), (3), & (4) Based on gross investments into securities. (1) Credit Rating is based on best of the three ratings (S&P/Moody/Fitch);