



# Silverdale Fixed Maturity Fund 2025

EMERGING MARKETS | US DOLLAR BONDS PORTFOLIO | TARGET MATURITY

42nd Factsheet as at 28th March 2024

## FUND DESCRIPTION

Silverdale Fixed Maturity Fund 2025 is a diversified portfolio of US dollar bonds, managed for fixed maturity and uses ring-fenced leverage to enhance investor returns.

## FUND ADVANTAGES

- Fixed Maturity: May 2025
- No forex risk: US dollars only
- Short Duration
- Enhanced returns
- Leverage: Non-recourse to investors
- Stable Half-Yearly dividend

## FUND INFORMATION

|                        |                                     |
|------------------------|-------------------------------------|
| Fund                   | Silverdale Fixed Maturity Fund 2025 |
| ACRA Regn. No.         | T20VC0123D-SF009                    |
| MAS SRS No.            | 21XGIRS0235                         |
| Umbrella Fund          | Silverdale Fund VCC                 |
| Domicile               | Singapore                           |
| Fund Currency          | US Dollar                           |
| Launch Date            | March 2021                          |
| Maturity Date          | May 2025 <sup>^</sup>               |
| NAV Computation        | Monthly (Friday)**                  |
| Subscription           | Closed                              |
| Redemption             | Monthly (Monday)**                  |
| Management Fee         | 0.50% p.a.                          |
| Dividend Frequency     | Half-yearly                         |
| Previous Dividend Date | 28 Mar 2024                         |
| Previous Dividend      | US\$ 2.00 per share                 |
| Next Dividend Date     | 28 Jun 2024 <sup>^</sup>            |
| Next Dividend          | US\$ 2.00 per share <sup>^</sup>    |

## AT A GLANCE

|                              |                 |
|------------------------------|-----------------|
| Net Assets (AUM)             | US\$ 14 million |
| Net Loan                     | US\$ 29 million |
| Gross Investments            | US\$ 43 million |
| Number of Securities         | 32              |
| Investment Grade Securities  | 60 %            |
| Max Single Security Exposure | 9 %             |

## FUND DETAILS

|                      |                                 |
|----------------------|---------------------------------|
| ISIN                 | SGXZ96456959                    |
| Bloomberg Code       | SILF25D SP                      |
| Initial Sales Charge | Up to 2%                        |
| Exit Load            | NIL                             |
| Contingent Load      | 5% before maturity <sup>1</sup> |

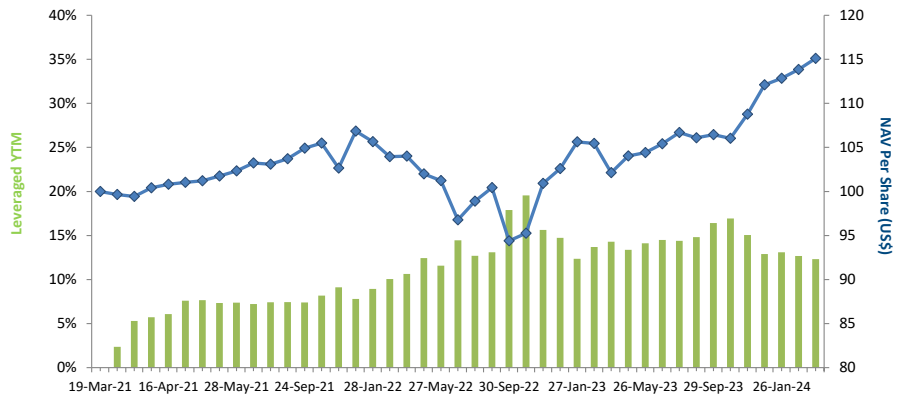
## PORTFOLIO DASHBOARD

### PERFORMANCE (net of fees)

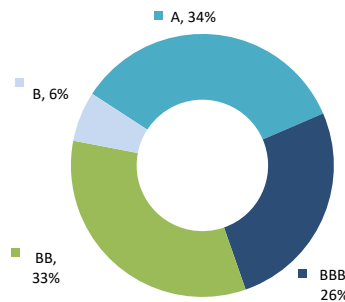
|                   |         |
|-------------------|---------|
| Year to Date      | 2.69 %  |
| Trailing 1 month  | 1.12 %  |
| Trailing 2 months | 2.01 %  |
| Trailing 3 months | 2.69 %  |
| Trailing 6 months | 8.13 %  |
| Since Inception   | 15.11 % |

### FUND STATISTICS

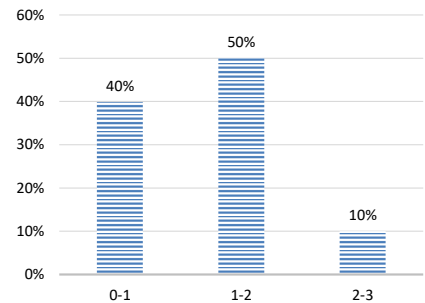
|                             |            |
|-----------------------------|------------|
| Portfolio Yield to Maturity | 6.47 %     |
| Leveraged Yield to Maturity | 12.33 %    |
| Average Coupon              | 5.03 %     |
| Average Duration            | 1.01 years |
| Total Dividend Paid         | US\$ 12.00 |



NAV and POST-LEVERAGE YTM (net of fees)



RATING PROFILE<sup>1</sup>



PORTFOLIO DURATION<sup>2</sup>

## FUND MANAGER

### Silverdale Capital Pte Ltd

Licensed and Regulated by Monetary Authority of Singapore (UEN# 200820921K)

8 Temasek Boulevard, #35-02 Suntec Tower-3, Singapore: 038988 • Tel: +65 6835 7130 • Email: IR@SilverdaleGroup.com



PLEASE REFER OVERLEAF FOR IMPORTANT DISCLOSURES & RISK FACTORS



PROUDLY FROM SINGAPORE

Silverdale Capital  
2008 - 2023

## Silverdale Fixed Maturity Fund 2025

42nd Factsheet as at 28th March 2024

## FUND MANAGEMENT DETAILS

## THE FUND

**Silverdale Fixed Maturity Fund 2025** is the Sub-Fund of Silverdale Fund VCC (UEN#T20VC0123D), which is an umbrella fund under the Variable Capital Companies Act of Singapore.

## CUSTODIAN / PRIME BROKER

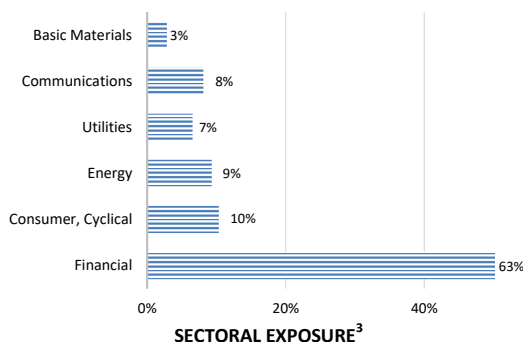
**Standard Chartered Bank (Singapore) Ltd**  
**Nomura Singapore Limited**  
**HSBC Singapore Limited**

## FUND ADMINISTRATOR

**NAV Fund Services (Singapore) Private Limited**  
9 Raffles Place, #26-01 Republic Plaza  
Singapore 048619  
Tel: +65 6856 7605  
Email: VCC@SilverdaleGroup.com

## RISK PROFILE

NAV per Share can go up or down and the amount invested in the Fund is at risk. The Fund uses leverage and derivatives for hedging and/or as part of its investment strategy which entails additional risks and costs. For further details, please refer to the Offering Documents.

SECTORAL EXPOSURE<sup>3</sup>PORTFOLIO HOLDINGS<sup>4</sup>

| Name                     | Weight % | Name                   | Weight %       |
|--------------------------|----------|------------------------|----------------|
| Tata Motors Ltd          | 8.9 %    | Lloyds Banking Group   | 2.3 %          |
| Network I2I Ltd          | 8.1 %    | Ubs Group Ag           | 2.3 %          |
| Barclays Plc             | 6.9 %    | Westpac Banking Corp   | 2.3 %          |
| Lamar Funding Ltd        | 6.6 %    | Credit Agricole London | 2.3 %          |
| Bank Bahrain & Kuwait    | 6.2 %    | Petroleos Mexicanos    | 2.2 %          |
| Petroleos Mexicanos      | 6.0 %    | Hsbc Holdings Plc      | 2.2 %          |
| Shriram Finance Ltd      | 5.5 %    | Ubs Group Ag           | 1.2 %          |
| Barclays Plc             | 4.8 %    | Ubs Group Ag           | 1.2 %          |
| Lloyds Banking Group Plc | 4.8 %    | Barclays Plc           | 1.2 %          |
| Ubs Group Ag             | 4.7 %    | Phoenix Grp Hld Plc    | 1.2 %          |
| Cash                     | 2.9 %    | Credit Agricole Sa     | 1.2 %          |
| Standard Chartered Plc   | 2.4 %    | Petroleos Mexicanos    | 1.2 %          |
| Periama Holdings Llc/De  | 2.4 %    | Tml Holdings Pte Ltd   | 0.7 %          |
| Rec Ltd                  | 2.3 %    | Tml Holdings Pte Ltd   | 0.7 %          |
| Lloyds Banking Group Plc | 2.3 %    | Jsw Steel Ltd          | 0.5 %          |
| Phoenix Grp Hld Plc      | 2.3 %    | Lloyds Banking Group   | 0.5 %          |
| <b>Total</b>             |          | <b>Total</b>           | <b>100.0 %</b> |

## PORTFOLIO UPDATE

During the month of March 2024, the Fund NAV increased by 1.12% as against the Bloomberg Emerging Market USD Corp and Quasi 1-3 Yr Index which increased by 0.91%. The increase in NAV was primarily due to British, Indian and Mexican credits. Sectorially, Financial, Consumer Cyclical, and Energy were the key positive contributors. The increase in NAV was accentuated by the mark-to-market gain from interest-rate swaps (IRS) as market priced-in less rate cuts.

## DIVIDEND UPDATE

The Fund has paid its Sixth Half-yearly Dividend of US\$ 2.00 per share on Distribution Class Shares. All investors holding Distribution Class Shares on Friday, 28th March 2024 (Dividend Record Date) have been paid dividends.

## HOW TO INVEST

Please ask your private bank/distributor to subscribe to Silverdale Fixed Maturity Fund 2025 as per terms of the Offering Documents (quoting the relevant ISIN). Should you seek any support, please Email the Fund Administrator at [VCC@SilverdaleGroup.com](mailto:VCC@SilverdaleGroup.com), or Call the Fund Manager at +65 6835 7130

## FUND MANAGER

## Silverdale Capital Pte Ltd

Licensed and Regulated by Monetary Authority of Singapore (UEN# 200820921K)

8 Temasek Boulevard, #35-02 Suntec Tower-3, Singapore: 038988 • Tel: +65 6835 7130 • Email: [IR@SilverdaleGroup.com](mailto:IR@SilverdaleGroup.com)

## RISK FACTORS

**Interest Rate Risk:** The increase (fall) in value of fixed income securities with fall (increase) in interest rate. **Credit Risk:** The ability of the issuer to redeem the bonds (or other securities) on maturity. **Liquidity Risk:** The ability to sell a bond before its redemption. **Counterparty Risk:** The risk due to failure of the counterparty dealt with. **Country Risk:** The investment strategy is subject to the risks relating to the geographical, political, economic and social issues of the country of the Issuer, and to a lesser extent that of United States. **Leverage/Derivatives Risk:** Disproportionately large change in value of securities due to relatively small change in determinant. Please read Section X, risk factors detailed in the Offering Documents before investing.

## DISCLAIMER

The above commentary does not provide a complete analysis of every material fact regarding the market, industry, security, portfolio or Silverdale Fixed Maturity Fund 2025 ("FMP25"). It is not a recommendation to buy or sell any security nor an investment advice. The portfolio holdings, opinions and information may change without notice and the actual results may differ from the said opinions and estimates. The contents of this document, including any narrative does not constitute an offer to sell or a solicitation of any offer to buy the units or shares in FMP25, or any other Sub-Fund or class of the Silverdale Fund VCC or any of the funds managed or advised by Silverdale Capital Pte Ltd., and is strictly for information only. The distribution of the shares of the Fund may be restricted in certain jurisdictions. It is the responsibility of any person or persons in possession of this Factsheet to inform themselves of, and to observe any such restrictions, all applicable laws and regulations of any relevant jurisdiction, including of any applicable legal requirements, exchange control regulations and taxes in the countries of their respective citizenship, residence or domicile. Any subscription for units or shares must be made solely on the basis of the Silverdale Fund VCC's Private Placement Memorandum, Class Supplement of FMP25 and Subscription Documents (together "the Offering Documents"). Past performance is not an indicator of future performance. The Fund uses leverage and invests in financial derivative instruments. Please refer to the Offering Documents for Risk Factors. This document is written for the benefit of and being communicated only to Accredited Investors or Institutional Investors as defined under the Securities and Futures Act (Cap. 289) of Singapore. Nothing in this document is intended to constitute legal, tax, securities or investment advice or opinion regarding the appropriateness of any investment; or a solicitation for any product or service. Please seek opinion from independent professional adviser before taking any decision based on this document. The NAV performance is computed taking: 1 month = 4 weeks, 3 months = 13 weeks, 6 months = 26 weeks, 9 months = 39 weeks, and 1 Year = 52 weeks. (\*\*) Assuming to be Business Day; (\*) Indicative; (^^) Based on Net Assets; (1) Minimum of US\$ 5,000; (1), (2), (3), & (4) Based on gross investments into securities. (1) Credit Rating is based on best of the three ratings (S&P/Moodys/Fitch); Fund Ranking source: Bloomberg's special report on Asia's Hedge Fund dated June 26, 2015;