

FUND DESCRIPTION

Silverdale Fixed Tenure Fund January 2028 is a diversified portfolio of short duration US dollar bonds, managed for fixed maturity and uses ring-fenced leverage to enhance investor returns.

FUND ADVANTAGES

- Fixed Maturity: Jan 2028
- No forex risk: US dollars only
- Short Duration
- Enhanced returns
- Leverage: Non-recourse to investors
- Dividend distribution: Half-Yearly

FUND INFORMATION

Fund	Silverdale Fixed Tenure Fund January 2028
ACRA Regn. No.	T20VC0123D-SF014
MAS SRS No.	23AMKHY1094
Umbrella Fund	Silverdale Fund VCC
Domicile	Singapore
Fund Currency	US Dollar
Launch Date	Dec 2023
Maturity Date	Jan 2028 [^]
NAV Computation	Weekly (Friday)**
Subscription	Weekly (Friday)**
Redemption	Weekly (Monday)**
Management Fee	0.70% p.a. ^{^^}
Dividend Frequency	Half-yearly
Next Dividend Date	31 May 2024 [^]
Next Dividend Amount	US\$ 3.75 per share [^]

PORTFOLIO DASHBOARD

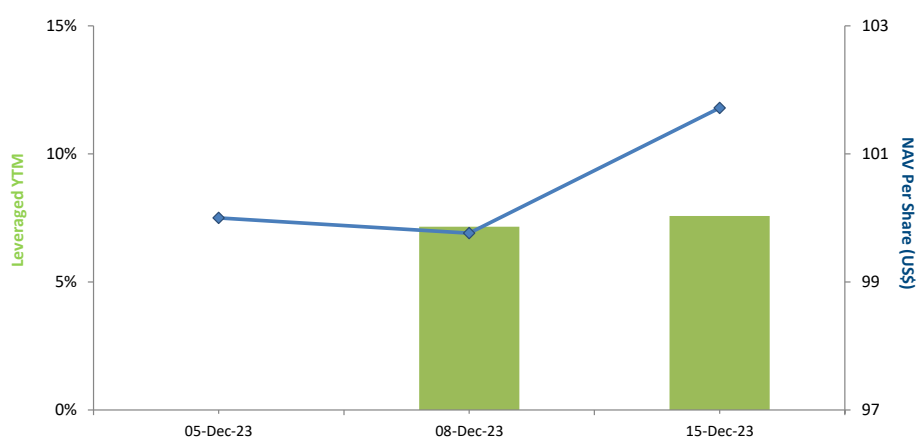
Accumulation NAV US\$ 101.7178 Distribution NAV US\$ 101.7178

PERFORMANCE (net of fees)

Year to Date	1.72 %
Trailing 1 Week	1.96 %

FUND STATISTICS

Portfolio Yield to Maturity	6.55 %
Leveraged Yield to Maturity	7.58 %
Average Coupon	4.79 %
Average Duration	2.73 years



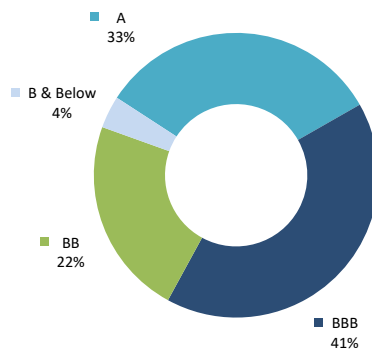
NAV and LEVERAGED YTM (net of fees)

AT A GLANCE

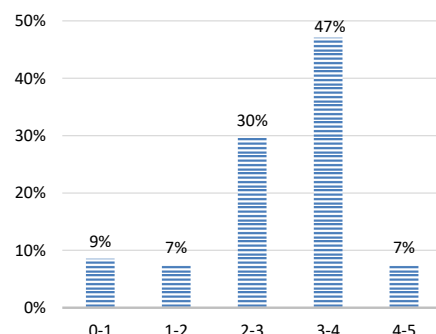
Net Assets (AUM)	US\$ 13 million
Net Loan	US\$ 13 million
Gross Investments	US\$ 29 million
Number of Securities	34
Investment Grade Securities	74 %
Max Single Security Exposure	8 %

FUND DETAILS

ISIN (Distribution)	SGXZ12652996
ISIN (Accumulation)	SGXZ96344171
Bloomberg (Dist)	SIFJ28D SP Equity
Bloomberg (Acc)	SIFJ28A SP Equity
Initial Sales Charge	Up to 2%
Exit Load	NIL
Contingent Load	5% before maturity ¹



RATING PROFILE¹



PORTFOLIO DURATION²

FUND MANAGER

Silverdale Capital Pte Ltd

Licensed and Regulated by Monetary Authority of Singapore (UEN# 200820921K)

8 Temasek Boulevard, #35-02 Suntec Tower-3, Singapore: 038988 • Tel: +65 6835 7130 • Email: IR@SilverdaleGroup.com



FUND MANAGEMENT DETAILS

THE FUND

Silverdale Fixed Tenure Fund January 2028

is the Sub-Fund of Silverdale Fund VCC (UEN#T20VC0123D), which is an umbrella fund under the Variable Capital Companies Act of Singapore.

CUSTODIAN / PRIME BROKER

Standard Chartered Bank (Singapore) Ltd
Nomura Singapore Limited

FUND ADMINISTRATOR

NAV Fund Services (Singapore) Private Limited

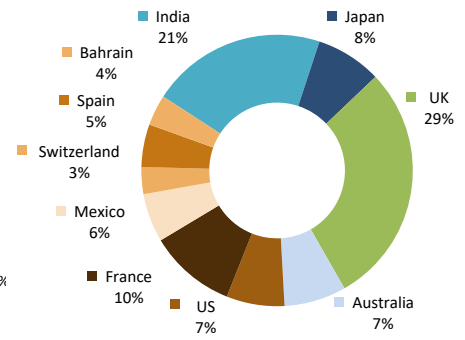
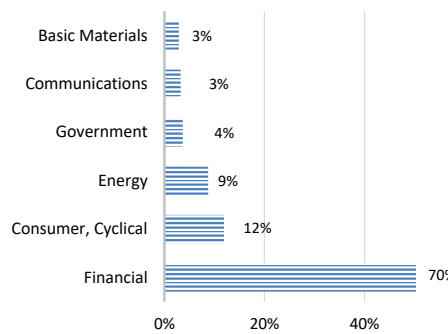
9 Raffles Place, #26-01 Republic Plaza
Singapore 048619

Tel: +65 6856 7605

Email: VCC@SilverdaleGroup.com

RISK PROFILE

NAV per Share can go up or down and the amount invested in the Fund is at risk. The Fund uses leverage and derivatives for hedging and/or as part of its investment strategy which entails additional risks and costs. For further details, please refer to the Offering Documents.



PORTFOLIO HOLDINGS⁴

Name	Weight %	Name	Weight %
Cash	7.8 %	Ubs Group Ag	3.2 %
Standard Chartered Plc	7.4 %	Petroleos Mexicanos	3.1 %
Aust & Nz Banking Group	5.1 %	Westpac Banking Corp	2.3 %
Banco Bilbao Vizcaya Arg	5.1 %	Societe Generale	1.8 %
Natwest Group Plc	4.9 %	Periana Holdings Llc/De	1.7 %
Hpcl-Mittal Energy Ltd	4.0 %	Nationwide Bldg Society	1.7 %
Barclays Plc	3.8 %	Ford Motor Credit Co Llc	1.7 %
Ford Motor Credit Co Llc	3.7 %	Jaguar Land Rover	1.7 %
Credit Agricole Sa	3.7 %	Petroleos Mexicanos	1.6 %
Kingdom Of Bahrain	3.7 %	Hsbc Holdings Plc	1.6 %
Lloyds Banking Group Plc	3.5 %	Bnp Paribas	1.6 %
Shriram Finance Ltd	3.4 %	Nissan Motor	1.5 %
Phoenix Grp Hld Plc	3.4 %	Banco Santander Mexico	1.1 %
Tml Holdings Pte Ltd	3.3 %	Nationwide Bldg Society	1.0 %
Network I2I Ltd	3.3 %	Shriram Finance Ltd	0.7 %
Societe Generale	3.3 %	Jsw Steel Ltd	0.6 %
Axis Bank Gandhinagar	3.2 %	Upl Corp Ltd	0.5 %
Total	100.0 %		

HOW TO INVEST

Please ask your private bank/distributor to subscribe to Silverdale Fixed Tenure Fund January 2028 as per terms of the Offering Documents (quoting the relevant ISIN). Should you seek any support, please Email the Fund Administrator at VCC@SilverdaleGroup.com, or Call the Fund Manager at +65 6835 7130

FUND MANAGER

Silverdale Capital Pte Ltd

Licensed and regulated by Monetary Authority of Singapore (UEN# 200820921K)

8 Temasek Boulevard, #35-02 Suntec Tower-3, Singapore: 038988

Tel: +65 6835 7130 • Email: IR@SilverdaleGroup.com



Visit our Website



RISK FACTORS

Interest Rate Risk: The increase (fall) in value of fixed income securities with fall (increase) in interest rate. **Credit Risk:** The ability of the issuer to redeem the bonds (or other securities) on maturity. **Liquidity Risk:** The ability to sell a bond before its redemption. **Counterparty Risk:** The risk due to failure of the counterparty dealt with. **Country Risk:** The investment strategy is subject to the risks relating to the geographical, political, economic and social issues of the country of the Issuer, and to a lesser extent that of United States. **Leverage/Derivatives Risk:** Disproportionately large change in value of securities due to relatively small change in determinant. Please read Section X, risk factors detailed in the Offering Documents before investing.

DISCLAIMER

The above commentary does not provide a complete analysis of every material fact regarding the market, industry, security, portfolio or Silverdale Fixed Tenure Fund January 2028 ("FTFJ28"). It is not a recommendation to buy or sell any security nor an investment advice. The portfolio holdings, opinions and information may change without notice and the actual results may differ from the said opinions and estimates. The contents of this document, including any narrative does not constitute an offer to sell or a solicitation of any offer to buy the units or shares in FTFJ28, or any other Sub-Fund or class of the of Silverdale Fund VCC or any of the funds managed or advised by Silverdale Capital Pte Ltd., and is strictly for information only. The distribution of the shares of the Fund may be restricted in certain jurisdictions. It is the responsibility of any person or persons in possession of this Factsheet to inform themselves of, and to observe any such restrictions, all applicable laws and regulations of any relevant jurisdiction, including of any applicable legal requirements, exchange control regulations and taxes in the countries of their respective citizenship, residence or domicile. Any subscription for units or shares must be made solely on the basis of the Silverdale Fund VCC's Private Placement Memorandum, Class Supplement of FTFJ28 and Subscription Documents (together "the Offering Documents"). Past performance is not an indicator of future performance. The Fund uses leverage and invests in financial derivative instruments. Please refer to the Offering Documents for Risk Factors. This document is written for the benefit of and being communicated only to Accredited Investors or Institutional Investors as defined under the Securities and Futures Act (Cap. 289) of Singapore. Nothing in this document is intended to constitute legal, tax, securities or investment advice or opinion regarding the appropriateness of any investment; or a solicitation for any product or service. Please seek opinion from independent professional adviser before taking any decision based on this document. The NAV performance is computed taking: 1 month = 4 weeks, 3 months = 13 weeks, 6 months = 26 weeks, 9 months = 39 weeks, and 1 Year = 52 weeks. (**) Assuming to be Business Day; (^) Indicative; (**) Based on Net Assets; (!) Minimum of US\$ 5,000; (1), (2), (3), & (4) Based on gross investments into securities. (1) Credit Rating is based on best of the three ratings (S&P/Moodys/Fitch); Fund Ranking source: Bloomberg's special report on Asia's Hedge Fund dated June 26, 2015;