

FUND DESCRIPTION

Silverdale Fixed Maturity Fund October 2026 is a diversified portfolio of short duration US dollar bonds, managed for target tenure and uses ring-fenced leverage to enhance investor returns.

FUND ADVANTAGES

- Fixed Maturity: October 2026
- No forex risk: US dollars only
- Short Duration
- Enhanced returns
- Leverage: Non-recourse to investors
- Half-Yearly dividend distribution

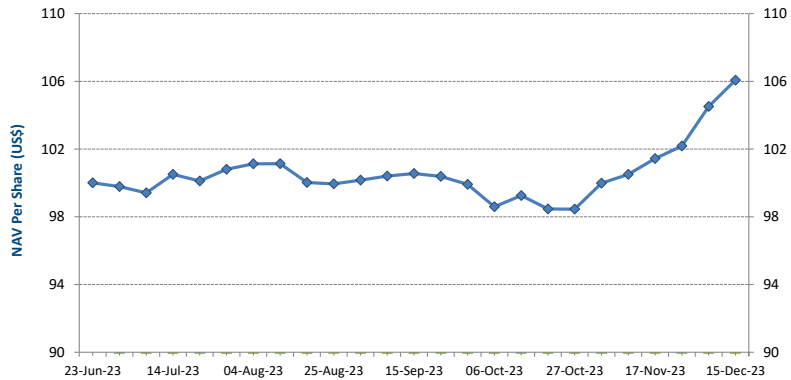
FUND INFORMATION

| | |
|--------------------|---|
| Fund | Silverdale Fixed Maturity Fund October 2026 |
| ACRA Regn. No. | T20VC0123D-SF013 |
| MAS SRS No. | 23YIAND0268 |
| Umbrella Fund | Silverdale Fund VCC |
| Domicile | Singapore |
| Fund Currency | US Dollar |
| Launch Date | June 2023 |
| Maturity Date | October 2026 [^] |
| NAV Computation | Weekly (Friday)** |
| Subscription | Weekly (Friday)** |
| Redemption | Weekly (Monday)** |
| Management Fee | 0.60% p.a. ^{^^} |
| Dividend Frequency | Half-yearly |
| Next Dividend Date | 26 April 2024 [^] |
| Next Dividend | US\$ 3.00 per share [^] |

Silverdale Fixed Maturity Fund October 2026 is an enhanced return fixed tenure bond fund maturing around October 2026. During the week ended 15th December 2023, the Fund NAV increased by 1.49% to US\$ 102.84 (previous week: US\$ 101.33) with portfolio yield (post-leverage) of 8.56% p.a. (previous week: 9.32%), and average duration of 2.24 years (previous week: 2.24 yrs).

PORTFOLIO DASHBOARD

| | | | |
|----------------------------------|--------------------------------|--------------------------------|------------|
| | Accumulation NAV US\$ 106.0717 | Distribution NAV US\$ 102.8395 | |
| PERFORMANCE (net of fees) | | PORTFOLIO ANALYTICS | |
| Year to Date | 6.07 % | Portfolio Yield to Maturity | 6.75 % |
| Trailing 1 week | 1.49 % | Leveraged Yield to Maturity | 8.56 % |
| Trailing 1 month | 4.57 % | Average Coupon | 4.58 % |
| Trailing 2 months | 7.73 % | Average Duration | 2.24 years |
| Trailing 3 months | 5.49 % | Total Dividend Paid | US\$ 3.00 |



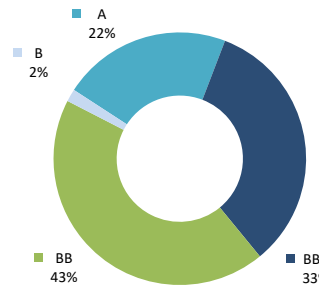
NAV per Share (net of fees)

AT A GLANCE

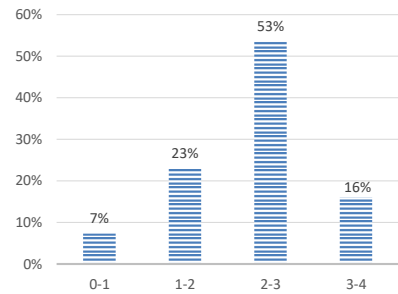
| | |
|------------------------------|------|
| Number of Securities | 54 |
| Investment Grade Securities | 55 % |
| Max Single Security Exposure | 6 % |

FUND DETAILS

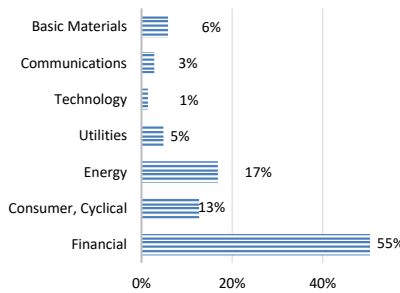
| | |
|----------------------|---------------------------------|
| ISIN (Distribution) | SGXZ70866256 |
| ISIN (Accumulation) | SGXZ22082119 |
| Bloomberg (Dist) | SIFO26D |
| Bloomberg (Acc) | SIFO26A |
| Initial Sales Charge | Up to 2% |
| Exit Load | NIL |
| Contingent Load | 5% before maturity ¹ |



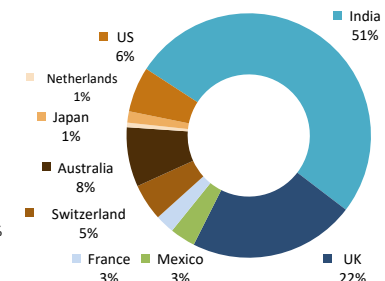
RATING PROFILE¹



PORTFOLIO DURATION²



SECTORAL EXPOSURE³



GEOGRAPHICAL EXPOSURE⁴

FUND MANAGER

Silverdale Capital Pte Ltd

Licensed and Regulated by Monetary Authority of Singapore (UEN# 200820921K)

8 Temasek Boulevard, #35-02 Suntec Tower-3, Singapore: 038988 • Tel: +65 6835 7130 • Email: IR@SilverdaleGroup.com





FUND MANAGEMENT DETAILS

THE FUND

Silverdale Fixed Maturity Fund October 2026

is the Sub-Fund of Silverdale Fund VCC (UEN#T20VC0123D), which is an umbrella fund under the Variable Capital Companies Act of Singapore.

CUSTODIAN

Standard Chartered Bank (Singapore) Ltd
Bank J. Safra Sarasin Ltd. Singapore Branch

FUND ADMINISTRATOR

NAV Fund Services (Singapore)

Private Limited

80 Robinson Road, #02-00

Singapore 068898

Tel: +65 6856 7605

Email: VCC@SilverdaleGroup.com

RISK PROFILE

NAV per Share can go up or down and the amount invested in the Fund is at risk. The Fund uses leverage and derivatives for hedging and/or as part of its investment strategy which entails additional risks and costs. For further details, please refer to the Offering Documents.

PORTFOLIO HOLDINGS⁴

| Name | Weight % | Name | Weight % |
|--------------------------|----------|--------------------------|----------------|
| Tml Holdings Pte Ltd | 6.0 % | Greenko Wind Projects Mu | 1.5 % |
| Shriram Finance Ltd | 5.6 % | Phoenix Grp Hld Plc | 1.5 % |
| Greenko Solar Mauritius | 3.8 % | Nomura - Cash | 1.5 % |
| Aust & Nz Banking Group | 3.7 % | Standard Chartered Plc | 1.5 % |
| Rec Ltd | 3.6 % | Ca Magnum Holdings | 1.4 % |
| Diamond li Ltd | 3.2 % | Petroleos Mexicanos | 1.4 % |
| Barclays Plc | 3.2 % | Petroleos Mexicanos | 1.4 % |
| Standard Chartered Plc | 3.1 % | Axis Bank Gandhinagar | 1.4 % |
| Periama Holdings Llc/De | 3.0 % | Hsbc Holdings Plc | 1.3 % |
| Shriram Finance Ltd | 2.8 % | Ford Motor Credit Co Llc | 1.1 % |
| Jsw Steel Ltd | 2.8 % | Nissan Motor Acceptance | 1.1 % |
| Hpcl-Mittal Energy Ltd | 2.8 % | Natwest Group Plc | 1.0 % |
| Natwest Group Plc | 2.7 % | Lloyds Banking Group Plc | 1.0 % |
| Hpcl-Mittal Energy Ltd | 2.7 % | Lloyds Banking Group Plc | 1.0 % |
| Bnp Paribas | 2.5 % | Phoenix Grp Hld Plc | 0.7 % |
| Network I2I Ltd | 2.3 % | Tml Holdings Pte Ltd | 0.7 % |
| Westpac Banking Corp | 2.2 % | Continuum Energy Levante | 0.7 % |
| Hdfc Bank Ltd | 2.1 % | Cooperatieve Rabobank Ua | 0.6 % |
| Nissan Motor Acceptance | 2.0 % | Ubs Group Ag | 0.5 % |
| Bprl International Singa | 2.0 % | Lloyds Banking Group Plc | 0.5 % |
| Westpac Banking Corp | 1.9 % | Network I2I Ltd | 0.5 % |
| Ford Motor Credit Co Llc | 1.8 % | Petroleos Mexicanos | 0.5 % |
| Ubs Group Ag | 1.8 % | Rec Ltd | 0.5 % |
| Nationwide Bldg Society | 1.7 % | Ubs Group Ag | 0.5 % |
| Natwest Group Plc | 1.7 % | Hsbc Holdings Plc | 0.5 % |
| Continuum Energy Aura | 1.6 % | Ubs Group Ag | 0.5 % |
| Ubs Group Ag | 1.6 % | Santander Uk Group Hldgs | 0.5 % |
| Total | | Total | 100.0 % |

HOW TO INVEST

Please ask your private bank/distributor to subscribe to Silverdale Fixed Maturity Fund October 2026 as per terms of the Offering Documents (quoting the relevant ISIN). Should you seek any support, please Email the Fund Administrator at VCC@SilverdaleGroup.com, or Call the Fund Manager at **+65 6835 7130**

FUND MANAGER

Silverdale Capital Pte Ltd

Licensed and Regulated by Monetary Authority of Singapore (UEN# 200820921K)

8 Temasek Boulevard, #35-02 Suntec Tower-3, Singapore: 038988

• Tel: +65 6835 7130 • Email: IR@SilverdaleGroup.com

Visit our Website



RISK FACTORS

Interest Rate Risk: The increase (fall) in value of fixed income securities with fall (increase) in interest rate. **Credit Risk:** The ability of the issuer to redeem the bonds (or other securities) on maturity. **Liquidity Risk:** The ability to sell a bond before its redemption. **Counterparty Risk:** The risk due to failure of the counterparty dealt with. **Country Risk:** The investment strategy is subject to the risks relating to the geographical, political, economic and social issues of the country of the Issuer, and to a lesser extent that of United States. **Leverage/Derivatives Risk:** Disproportionately large change in value of securities due to relatively small change in determinant. Please read Section X, risk factors detailed in the Offering Documents before investing.

DISCLAIMER

The above commentary does not provide a complete analysis of every material fact regarding the market, industry, security, portfolio or Silverdale Fixed Maturity Fund October 2026 ("FMPO26"). It is not a recommendation to buy or sell any security nor an investment advice. The portfolio holdings, opinions and information may change without notice and the actual results may differ from the said opinions and estimates. The contents of this document, including any narrative does not constitute an offer to sell or a solicitation of any offer to buy the units or shares in FMPO26, or any other Sub-Fund or class of the of Silverdale Fund VCC or any of the funds managed or advised by Silverdale Capital Pte Ltd., and is strictly for information only. The distribution of the shares of the Fund may be restricted in certain jurisdictions. It is the responsibility of any person or persons in possession of this Factsheet to inform themselves of, and to observe any such restrictions, all applicable laws and regulations of any relevant jurisdiction, including of any applicable legal requirements, exchange control regulations and taxes in the countries of their respective citizenship, residence and/or domicile as applicable. Any subscription for shares must be made solely on the basis of the Silverdale Fund VCC's Private Placement Memorandum, Class Supplement of FMPO26 and Subscription Documents (together "the Offering Documents"). Past performance is not an indicator of future results. The Fund uses leverage and invests in financial derivative instruments. Please refer to the Offering Documents for Risk Factors. This document is written for the benefit of and being communicated only to Accredited Investors or Institutional Investors as defined under the Securities and Futures Act (Cap. 289) of Singapore. Nothing in this document is intended to constitute legal, tax, securities or investment advice or opinion regarding the appropriateness of any investment; or a solicitation for any product or service. Please seek opinion from independent professional adviser before taking any decision based on this document. The NAV performance is computed taking: 1 month = 4 weeks, 3 months = 13 weeks, 6 months = 26 weeks, 9 months = 39 weeks, and 1 Year = 52 weeks. (***) Assuming to be Business Day; (*) Indicative; (**) Based on Net Assets; (1) Minimum of US\$ 5,000; The Fund performance and portfolio attributes are based on direct and indirect investments by FMPO26 on a weighted average basis of underlying portfolio of investments. (1), (2), (3), & (4) Based on gross investments into securities. (1) Credit Rating is based on best of the three ratings (S&P/Moody's/Fitch); Fund Ranking source: Bloomberg's special report on Asia's Hedge Fund dated June 26, 2015;