

## Silverdale Fixed Maturity Fund 2023

INDIA | US DOLLAR BONDS PORTFOLIO | TARGET MATURITY

Final Factsheet as at 24th November 2023

### FUND DESCRIPTION

Silverdale Fixed Maturity Fund 2023 is a diversified portfolio of short duration US dollar bonds, managed for fixed maturity and uses ring-fenced leverage to enhance investor returns.

### FUND ADVANTAGES

- Fixed Maturity: November 2023
- No forex risk: US dollars only
- Short Duration
- Enhanced returns
- Leverage: Non-recourse to investors
- Half-Yearly dividend distribution

### FUND INFORMATION

Fund	Silverdale Fixed Maturity Fund 2023
ACRA Regn. No.	T20VC0123D-SF003
MAS SRS No.	20Z1Y6U1213
Umbrella Fund	Silverdale Fund VCC
Domicile	Singapore
Fund Currency	US Dollar
Launch	28 September 2020
Sub Fund Launch	April 2021
Maturity	24 November 2023
NAV Computation	Closed
Subscription	Closed
Redemption	Closed
Management Fee	0.50% p.a.
Dividend Frequency	Half-yearly
Last Dividend Date	30 Jun 2023
Last Dividend	US\$ 2.00 per share

Silverdale Fixed Maturity Fund 2023 matured on Friday, 24th November 2023. The Fund has delivered a total return of 23.70%, that is, 7% XIRR return to its investors.

### PORTFOLIO DASHBOARD

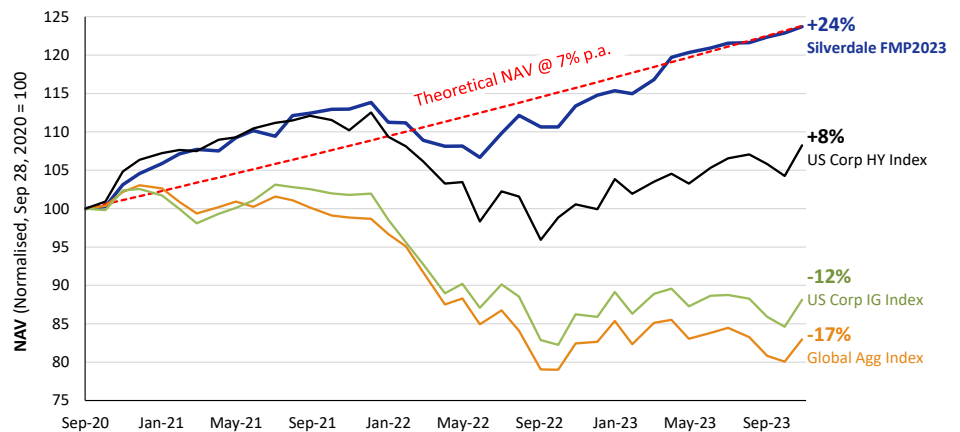
Accumulation NAV US\$ 123.7026 Distribution NAV US\$ 111.5798

### PERFORMANCE (net of fees)

Year to Date	7.79 %
Trailing 1 month	0.67 %
Trailing 3 months	1.71 %
Trailing 6 months	2.79 %
Since Inception	23.70 %

### FUND STATISTICS

Portfolio Yield to Maturity	-
Leveraged YTM - Actual	-
Average Coupon	-
Average Duration	-
Total Dividend Paid	US\$ 11.00



Fund Performance versus Indices

### COMMENTARY

Silverdale Fixed Maturity Fund 2023 matured on Friday, 24th November 2023, having delivered absolute return of +23.70% over 3.2 years, as against 3-year US Treasury return of +0.45%, Bloomberg US Corporate HY Index return of circa +8%, Bloomberg US Corporate IG Index decline of circa -12%, and Bloomberg Global Aggregate Index decline of circa -17%.

### RELATIVE RETURN MATRIX

For the period 28 September 2020 - 24 November 2023

Fund / Indices	Returns (Absolute)	Returns (Annualized)
<b>Silverdale Fixed Maturity Fund 2023</b>	<b>23.70%</b>	<b>7.00%</b>
3-year US Treasury	0.45%	0.14%
Bloomberg US Corporate High Yield Index	8.24%	2.54%
Bloomberg US Corporate Investment Grade Index	(11.89%)	(3.93%)
Bloomberg Global Aggregate Index	(17.03%)	(5.74%)

For Silverdale Fund, annualized return is based on XIRR while for indices it is annualization of total return of the index during the said period.

### AT A GLANCE

Net Assets (AUM) US\$ 16 million

### FUND DETAILS

ISIN	SGXZ51364842
Bloomberg Code	SISFM1U SP Equity
Initial Sales Charge	Up to 2%
Exit Load	NIL
	5% before maturity <sup>1</sup>

### FUND MANAGER

#### Silverdale Capital Pte Ltd

Licensed and Regulated by Monetary Authority of Singapore (UEN# 200820921K)

8 Temasek Boulevard, #35-02 Suntec Tower-3, Singapore: 038988 ▪ Tel: +65 6835 7130 ▪ Email: ir@silverdalegroup.com



PLEASE REFER OVERLEAF FOR IMPORTANT DISCLOSURES & RISK FACTORS

## Silverdale Fixed Maturity Fund 2023

Final Factsheet as at 24th November 2023

### FUND MANAGEMENT DETAILS

#### THE FUND

**Silverdale Fixed Maturity Fund 2023** is the Sub-Fund of Silverdale Fund VCC (UEN#T20VC0123D), which is an umbrella fund under the Variable Capital Companies Act of Singapore.

#### CUSTODIAN

**Standard Chartered Bank (Singapore) Ltd**  
**DBS Bank Ltd**

#### FUND ADMINISTRATOR

##### NAV Fund Services (Singapore)

##### Private Limited

80 Robinson Road, #02-00

Singapore 068898

Tel: +65 6856 7605

Email: VCC@SilverdaleGroup.com

#### RISK PROFILE

NAV per Share can go up or down and the amount invested in the Fund is at risk. The Fund uses leverage and derivatives for hedging and/or as part of its investment strategy which entails additional risks and costs. For further details, please refer to the Offering Documents.

#### WORD OF APPRECIATION

We are grateful to our stakeholders for their support in making Silverdale Fixed Maturity Fund 2023 a success, despite the challenging market conditions.

It is your trust in us that has made us market leaders in enhanced returns Fixed Maturity Portfolios, which mitigate the mark-to-market risks that stem from interest rates fluctuations and achieve the return objectives with greater predictability.

Thank you to our investors, distributors, prime brokers, custodians, fund administrator, auditors ....

- Team Silverdale

### HOW TO INVEST

Please ask your private bank/distributor to subscribe to Silverdale Fixed Maturity Fund 2023 as per terms of the Composite PPM (quoting the relevant ISIN). Should you seek any support, please: Email the Fund Administrator at [VCC@SilverdaleGroup.com](mailto:VCC@SilverdaleGroup.com) or Call the Fund Manager at **+65 6835 7130**

### FUND MANAGER

#### Silverdale Capital Pte Ltd

Licensed and Regulated by Monetary Authority of Singapore (UEN# 200820921K)

8 Temasek Boulevard, #35-02 Suntec Tower-3, Singapore: 038988 • Tel: +65 6835 7130 • Email: [ir@silverdalegroup.com](mailto:ir@silverdalegroup.com)



WealthBriefingAsia

AWARDS 2018



### RISK FACTORS

**Interest Rate Risk:** The increase (fall) in value of fixed income securities with fall (increase) in interest rate. **Credit Risk:** The ability of the issuer to redeem the bonds (or other securities) on maturity. **Liquidity Risk:** The ability to sell a bond before its redemption. **Counterparty Risk:** The risk due to failure of the counterparty dealt with. **Country Risk:** The investment strategy is subject to the risks relating to the geographical, political, economic and social issues of the country of the Issuer, and to a lesser extent that of United States. **Leverage/Derivatives Risk:** Disproportionately large change in value of securities due to relatively small change in determinant.

### DISCLAIMER

The above commentary does not provide a complete analysis of every material fact regarding the market, industry, security, portfolio or Silverdale Fixed Maturity Fund 2023 ("FMP23"). It is not a recommendation to buy or sell any security nor an investment advice. The portfolio holdings, opinions and information may change without notice and the actual results may differ from the said opinions and estimates. The contents of this document, including any narrative does not constitute an offer to sell or a solicitation of any offer to buy the units or shares in FMP23, or any other Sub-Fund or class of the of Silverdale Fund VCC or any of the funds managed or advised by Silverdale Capital Pte Ltd., and is strictly for information only. The distribution of the shares of the Fund may be restricted in certain jurisdictions. It is the responsibility of any person or persons in possession of this Factsheet to inform themselves of, and to observe any such restrictions, all applicable laws and regulations of any relevant jurisdiction, including of any applicable legal requirements, exchange control regulations and taxes in the countries of their respective citizenship, residence or domicile. Any subscription for units or shares must be made solely on the basis of the Silverdale Fund VCC's Private Placement Memorandum, Class Supplement of FMP23 and Subscription Documents (together "the Offering Documents"). Past performance is not an indicator of future performance. The Fund uses leverage and invests in financial derivative instruments. Please refer to the Offering Documents for Risk Factors. This document is written for the benefit of and being communicated only to Accredited Investors or Institutional Investors as defined under the Securities and Futures Act (Cap. 289) of Singapore. Nothing in this document is intended to constitute legal, tax, securities or investment advice or opinion regarding the appropriateness of any investment; or a solicitation for any product or service. Please seek opinion from independent professional adviser before taking any decision based on this document. NAV prior to 30 April 2021 is based on NAV of Silverdale Fund SPC-SP10 managed by the same fund management team without change in strategy. The NAV performance is computed taking: 1 month = 4 weeks, 3 months = 13 weeks, 6 months = 26 weeks, 9 months = 39 weeks, and 1 Year = 52 weeks. (\*) Accumulation NAV represents shares where no dividend is paid; (\*\*) Assuming to be Business Day; Silverdale Fund SPC-SP10; (!) Minimum of US\$ 5,000; Fund Ranking source: Bloomberg's special report on Asia's Hedge Fund dated June 26, 2015;