

# Silverdale Fixed Maturity Fund 2023

INDIA | US DOLLAR BONDS PORTFOLIO | TARGET MATURITY

39th Factsheet as at 31st March 2023

## FUND DESCRIPTION

Silverdale Fixed Maturity Fund 2023 is a diversified portfolio of short duration US dollar bonds, managed for fixed maturity and uses ring-fenced leverage.

## FUND ADVANTAGES

- Fixed Maturity: November 2023
- No forex risk: US dollars only
- Short Duration
- Enhanced returns
- Leverage: Non-recourse to investors
- Half-Yearly dividend distribution

## FUND INFORMATION

Fund	Silverdale Fixed Maturity Fund 2023
ACRA Regn. No.	T20VCO123D-SF003
MAS SRS No.	20ZIY6U1213
Umbrella Fund	Silverdale Fund VCC
Domicile	Singapore
Fund Currency	US Dollar
Launch	September 2020 <sup>#</sup>
Sub Fund Launch	April 2021
Maturity	November 2023 <sup>^</sup>
NAV Computation	Monthly (Friday)**
Subscription	Closed
Redemption	Monthly (Monday)**
Management Fee	0.50% p.a.
Dividend Frequency	Half-yearly
Previous Dividend Date	30 Dec 2022
Previous Dividend	US\$ 2.00 per share
Next Dividend Date	30 Jun 2023 <sup>^</sup>
Next Dividend	US\$ 2.00 per share <sup>^</sup>

## AT A GLANCE

Net Assets (AUM)	US\$ 15 million
Net Loan	US\$ 33 million
Gross Investments	US\$ 46 million
Number of Securities	16
Investment Grade Securities	46 %
Max Single Security Exposure	19 %

## FUND DETAILS

ISIN	SGXZ51364842
Bloomberg Code	SISFM1U SP Equity
Initial Sales Charge	Up to 2%
Exit Load	NIL
	5% before maturity <sup>1</sup>

Silverdale Fixed Maturity Fund 2023 is a leveraged short duration bond fund maturing around November 2023. During the month ended 31st March 2023, the Fund NAV increased by 1.60% to NAV of US\$ 107.30 (previous month: US\$ 105.61), with actual portfolio yield (post-leverage) of 24.37% p.a. (previous month: 19.75% p.a.), and average duration of 0.61 years (previous month: 0.66 years).

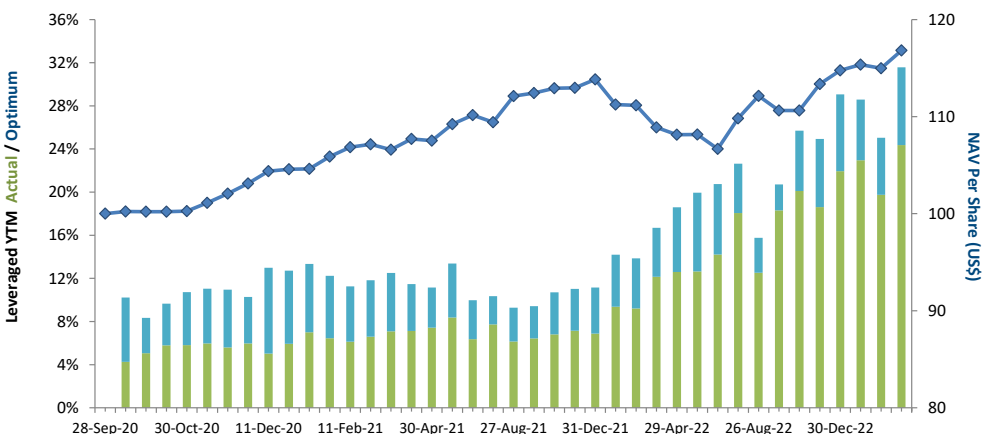
## PORTFOLIO DASHBOARD

### PERFORMANCE (net of fees)

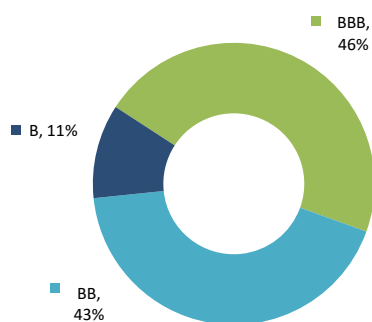
Year to Date	1.79 %
Trailing 1 month	1.60 %
Trailing 3 months	1.79 %
Trailing 6 months	5.58 %
Since Inception	16.82 %

### FUND STATISTICS

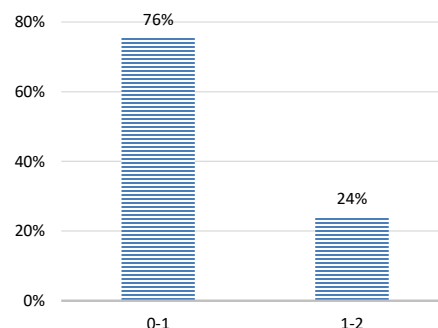
Portfolio Yield to Maturity	9.80 %
Leveraged YTM - Actual	24.37 %
Average Coupon	4.81 %
Average Duration	0.61 years
Total Dividend Paid	US\$ 9.00



## NAV AND POST-LEVERAGE YTM (net of fees)



RATING PROFILE<sup>1</sup>



PORTFOLIO DURATION<sup>2</sup>

## FUND MANAGER

### Silverdale Capital Pte Ltd

Licensed and Regulated by Monetary Authority of Singapore (UEN# 200820921K)

8 Temasek Boulevard, #35-02 Suntec Tower-3, Singapore: 038988 ■ Tel: +65 6835 7130 ■ Email: ir@silverdalegroup.com





## Silverdale Fixed Maturity Fund 2023

39th Factsheet as at 31st March 2023

### FUND MANAGEMENT DETAILS

#### THE FUND

**Silverdale Fixed Maturity Fund 2023** is the Sub-Fund of Silverdale Fund VCC (UEN#T20VC0123D), which is an umbrella fund under the Variable Capital Companies Act of Singapore.

#### CUSTODIAN

Standard Chartered Bank (Singapore) Ltd  
DBS Bank Ltd

#### FUND ADMINISTRATOR

##### NAV Fund Services (Singapore)

##### Private Limited

80 Robinson Road, #02-00

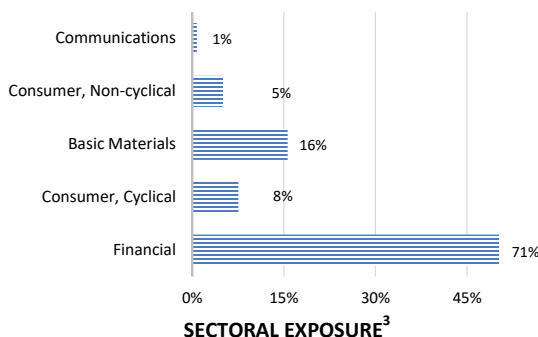
Singapore 068898

Tel: +65 6856 7605

Email: VCC@SilverdaleGroup.com

#### RISK PROFILE

NAV per Share can go up or down and the amount invested in the Fund is at risk. The Fund uses leverage and derivatives for hedging and/or as part of its investment strategy which entails additional risks and costs. For further details, please refer to the Offering Documents.



#### PORTFOLIO HOLDINGS<sup>4</sup>

NAME	Weight %	NAME	Weight %
Muthoot Finance Ltd	19.2 %	Abja Investment Co	3.7 %
Rec Limited	15.7 %	Vedanta Uk Investments	3.1 %
Shriram Finance Ltd	10.9 %	Vedanta Resources	1.1 %
Abja Investment Co	7.7 %	Cash	0.9 %
Tml Holdings Pte Ltd	7.5 %	Rec Limited	0.8 %
lfl Finance Ltd	6.6 %	Bharti Airtel Internatio	0.8 %
Power Finance Corp Ltd	6.4 %		
Canara Bank London	5.3 %		
Shriram Finance Ltd	5.2 %		
Adani Ports And Special	5.0 %		
		<b>Total</b>	<b>100.0 %</b>

#### PORTFOLIO UPDATE

During the month of March 2023, the Fund NAV increased 1.60% as against increase of 0.29% for Indian credits in Bloomberg Emerging Market USD Corp and Quasi 1-3 Yr Index. Financial, Energy and Basic Material sectors were the key contributors. The increase in NAV was partly offset by the mark-to-market losses from interest-rate swaps (IRS) as markets priced-in interest rate cuts.

### HOW TO INVEST

Please ask your private bank/distributor to subscribe to Silverdale Fixed Maturity Fund 2023 as per terms of the Composite PPM (quoting the relevant ISIN). Should you seek any support, please: Email the Fund Administrator at [VCC@SilverdaleGroup.com](mailto:VCC@SilverdaleGroup.com) or Call the Fund Manager at **+65 6835 7130**

### FUND MANAGER

#### Silverdale Capital Pte Ltd

Licensed and Regulated by Monetary Authority of Singapore (UEN# 200820921K)

8 Temasek Boulevard, #35-02 Suntec Tower-3, Singapore: 038988 ▪ Tel: +65 6835 7130 ▪ Email: [ir@silverdalegroup.com](mailto:ir@silverdalegroup.com)



### RISK FACTORS

**Interest Rate Risk:** The increase (fall) in value of fixed income securities with fall (increase) in interest rate. **Credit Risk:** The ability of the issuer to redeem the bonds (or other securities) on maturity. **Liquidity Risk:** The ability to sell a bond before its redemption. **Counterparty Risk:** The risk due to failure of the counterparty dealt with. **Country Risk:** The investment strategy is subject to the risks relating to the geographical, political, economic and social issues of the country of the Issuer, and to a lesser extent that of United States. **Leverage/Derivatives Risk:** Disproportionately large change in value of securities due to relatively small change in determinant.

### DISCLAIMER

The above commentary does not provide a complete analysis of every material fact regarding the market, industry, security, portfolio or Silverdale Fixed Maturity Fund 2023 ("FMP23"). It is not a recommendation to buy or sell any security nor an investment advice. The portfolio holdings, opinions and information may change without notice and the actual results may differ from the said opinions and estimates. The contents of this document, including any narrative does not constitute an offer to sell or a solicitation of any offer to buy the units or shares in FMP23, or any other Sub-Fund or class of the of Silverdale Fund VCC or any of the funds managed or advised by Silverdale Capital Pte Ltd., and is strictly for information only. The distribution of the shares of the Fund may be restricted in certain jurisdictions. It is the responsibility of any person or persons in possession of this Factsheet to inform themselves of, and to observe any such restrictions, all applicable laws and regulations of any relevant jurisdiction, including of any applicable legal requirements, exchange control regulations and taxes in the countries of their respective citizenship, residence or domicile. Any subscription for units or shares must be made solely on the basis of the Silverdale Fund VCC's Private Placement Memorandum, Class Supplement of FMP23 and Subscription Documents (together "the Offering Documents"). Past performance is not an indicator of future performance. The Fund uses leverage and invests in financial derivative instruments. Please refer to the Offering Documents for Risk Factors. This document is written for the benefit of and being communicated only to Accredited Investors or Institutional Investors as defined under the Securities and Futures Act (Cap. 289) of Singapore. Nothing in this document is intended to constitute legal, tax, securities or investment advice or opinion regarding the appropriateness of any investment; or a solicitation for any product or service. Please seek opinion from independent professional adviser before taking any decision based on this document. NAV prior to 30 April 2021 is based on NAV of Silverdale Fund SPC-SP10 managed by the same fund management team without change in strategy. The NAV performance is computed taking: 1 month = 4 weeks, 3 months = 13 weeks, 6 months = 26 weeks, 9 months = 39 weeks, and 1 Year = 52 weeks. (\*) Accumulation NAV represents shares where no dividend is paid; (\*\*) Assuming to be Business Day; (#) Date of precedent fund: Silverdale Fund SPC-SP10; (\*) Indicative; (l) Minimum of US\$ 5,000; (1), (2), (3), & (4) Based on gross investments into securities. (1) Credit Rating is based on best of the three ratings (S&P/Moody's/Fitch); Fund Ranking source: Bloomberg's special report on Asia's Hedge Fund dated June 26, 2015;