

**Silverdale**

Fund Management



PROUDLY FROM SINGAPORE

BEST FUND PROVIDER  
INVESTMENT GRADE BOND**Silverdale Fixed Maturity Fund August 2024**

EMERGING MARKETS | US DOLLAR BONDS PORTFOLIO | TARGET MATURITY

7th Factsheet as at 27th January 2023

**FUND DESCRIPTION**

Silverdale Fixed Maturity Fund August 2024 is a diversified portfolio of short duration US dollar bonds, managed for fixed maturity and uses ring-fenced leverage.

**FUND ADVANTAGES**

- Fixed Maturity: Aug 2024
- No forex risk: US dollars only
- Short Duration
- Enhanced returns, non-recourse leverage
- Half-Yearly dividend distribution

**FUND INFORMATION**

Fund	Silverdale Fixed Maturity Fund Aug 2024
ACRA Regn. No.	T20VC0123D-SF011
MAS SRS No.	2262GZL0880
Umbrella Fund	Silverdale Fund VCC
Domicile	Singapore
Fund Currency	US Dollar
Launch Date	Nov 2022
Maturity Date	Aug 2024 <sup>^</sup>
NAV Computation	Weekly (Friday)**
Subscription	Weekly (Friday)**
Redemption	Weekly (Monday)**
Management Fee	0.50% p.a.
Dividend Frequency	Half-yearly
Next Dividend Date	28 Apr 2023 <sup>^</sup>
Next Dividend	US\$ 2.00 per share <sup>^</sup>

**PORTFOLIO DASHBOARD**

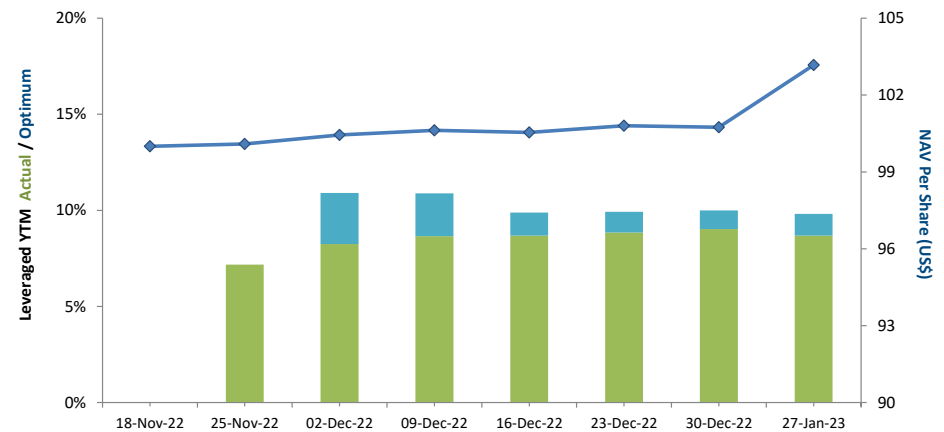
Accumulation NAV US\$ 103.1726 Distribution NAV US\$ 103.1726

**PERFORMANCE (net of fees)**

Year to Date	2.41 %
Trailing 1 month	2.41 %
Trailing 2 months	3.08 %

**FUND STATISTICS**

Portfolio Yield to Maturity	6.95 %
Leveraged Yield to Maturity	8.69 %
Average Coupon	5.08 %
Average Duration	1.28 years



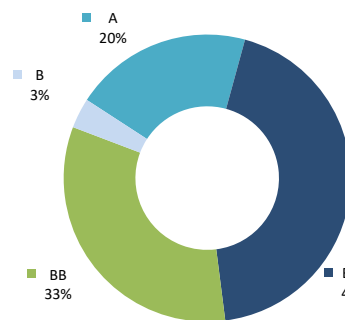
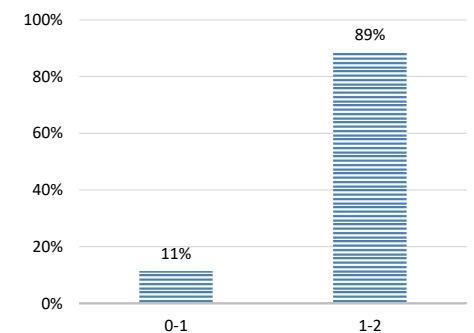
NAV and POST-LEVERAGE YTM (net of fees)

**AT A GLANCE**

Net Assets (AUM)	US\$ 9 million
Net Loan	US\$ 10 million
Gross Investments	US\$ 19 million
Number of Securities	18
Investment Grade Securities	64 %
Max Single Security Exposure	13 %

**FUND DETAILS**

ISIN (Distribution)	SGXZ63230155
ISIN (Accumulation)	SGXZ18312777
Bloomberg (Dist)	SIFA24D SP Equity
Bloomberg (Acc)	SIFA24A SP Equity
Initial Sales Charge	Up to 2%
Exit Load	NIL
Contingent Load	5% before maturity <sup>1</sup>

RATING PROFILE<sup>1</sup>PORTFOLIO DURATION<sup>2</sup>**FUND MANAGER****Silverdale Capital Pte Ltd**

Licensed and Regulated by Monetary Authority of Singapore (UEN# 200820921K)

8 Temasek Boulevard, #35-02 Suntec Tower-3, Singapore: 038988 • Tel: +65 6835 7130 • Email: IR@SilverdaleGroup.com



PLEASE REFER OVERLEAF FOR IMPORTANT DISCLOSURES &amp; RISK FACTORS

**Silverdale**

Fund Management



PROUDLY FROM SINGAPORE

**Silverdale Fixed Maturity Fund August 2024**

7th Factsheet as at 27th January 2023

**FUND MANAGEMENT DETAILS****THE FUND****Silverdale Fixed Maturity Fund August 2024**

is the Sub-Fund of Silverdale Fund VCC (UEN#T20VCO123D), which is an umbrella fund under the Variable Capital Companies Act of Singapore.

**CUSTODIAN**

**Standard Chartered Bank (Singapore) Ltd**  
**Bank Julius Baer, Singapore Branch**

**FUND ADMINISTRATOR****NAV Fund Services (Singapore)****Private Limited**

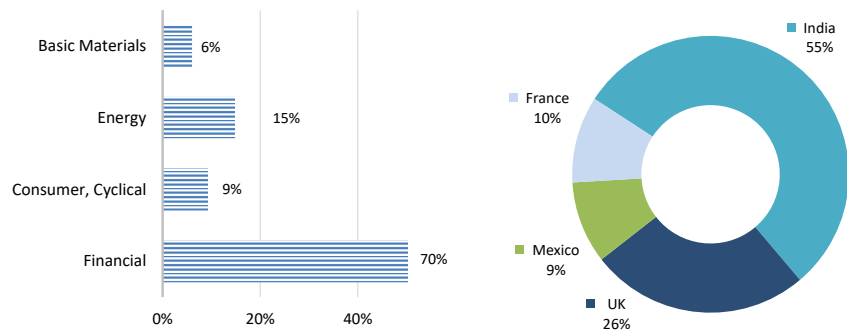
80 Robinson Road, #02-00  
Singapore 068898

**Tel:** +65 6856 7605

**Email:** VCC@SilverdaleGroup.com

**RISK PROFILE**

NAV per Share can go up or down and the amount invested in the Fund is at risk. The Fund uses leverage and derivatives for hedging and/or as part of its investment strategy which entails additional risks and costs. For further details, please refer to the Offering Documents.

**SECTORAL EXPOSURE<sup>3</sup>****PORTFOLIO HOLDINGS<sup>4</sup>**

Name	Weight %	Name	Weight %
Shriram Finance Ltd	13.0 %	Vedanta Resources	3.4 %
Barclays Plc	10.3 %	Lloyds Banking Group	2.9 %
Lloyds Banking Group Plc	9.7 %	Oil India Ltd	2.6 %
Petroleos Mexicanos	9.6 %	Bnp Paribas	2.6 %
Tml Holdings Pte Ltd	9.3 %	Jsw Steel Ltd	2.6 %
Muthoot Finance Ltd	7.9 %	Barclays Plc	2.6 %
Rec Limited	7.6 %	Ongc Videsh Ltd	2.6 %
Credit Agricole Sa	7.5 %	Power Finance Corp Ltd	2.0 %
Rec Limited	3.5 %	<b>Total</b>	<b>100.0 %</b>

**GEOGRAPHICAL EXPOSURE<sup>4</sup>****PORTFOLIO UPDATE**

During the month of January 2023, the Fund NAV increased by 2.41% as against increase of 1.72% for Bloomberg Emerging Market USD Corp and Quasi 1-3 Yr Index. Financial, Energy, and Consumer Cyclical sectors were the key contributors. The portfolio is still under construction.

**HOW TO INVEST**

Please ask your private bank/distributor to subscribe to Silverdale Fixed Maturity Fund August 2024 as per terms of the Offering Documents (quoting the relevant ISIN). Should you seek any support, please Email the Fund Administrator at [VCC@SilverdaleGroup.com](mailto:VCC@SilverdaleGroup.com), or Call the Fund Manager at +65 6835 7130

**FUND MANAGER****Silverdale Capital Pte Ltd**

Licensed and Regulated by Monetary Authority of Singapore (UEN# 200820921K)

8 Temasek Boulevard, #35-02 Suntec Tower-3, Singapore: 038988 • Tel: +65 6835 7130 • Email: [IR@SilverdaleGroup.com](mailto:IR@SilverdaleGroup.com)

**RISK FACTORS**

**Interest Rate Risk:** The increase (fall) in value of fixed income securities with fall (increase) in interest rate. **Credit Risk:** The ability of the issuer to redeem the bonds (or other securities) on maturity. **Liquidity Risk:** The ability to sell a bond before its redemption. **Counterparty Risk:** The risk due to failure of the counterparty dealt with. **Country Risk:** The investment strategy is subject to the risks relating to the geographical, political, economic and social issues of the country of the Issuer, and to a lesser extent that of United States. **Leverage/Derivatives Risk:** Disproportionately large change in value of securities due to relatively small change in determinant. Please read Section X, risk factors detailed in the Offering Documents before investing.

**DISCLAIMER**

The above commentary does not provide a complete analysis of every material fact regarding the market, industry, security, portfolio or Silverdale Fixed Maturity Fund August ("FMPA24"). It is not a recommendation to buy or sell any security nor an investment advice. The portfolio holdings, opinions and information may change without notice and the actual results may differ from the said opinions and estimates. The contents of this document, including any narrative does not constitute an offer to sell or a solicitation of any offer to buy the units or shares in FMPA24, or any other Sub-Fund or class of the Silverdale Fund VCC or any of the funds managed or advised by Silverdale Capital Pte Ltd., and is strictly for information only. The distribution of the shares of the Fund may be restricted in certain jurisdictions. It is the responsibility of any person or persons in possession of this Factsheet to inform themselves of, and to observe any such restrictions, all applicable laws and regulations of any relevant jurisdiction, including of any applicable legal requirements, exchange control regulations and taxes in the countries of their respective citizenship, residence or domicile. Any subscription for units or shares must be made solely on the basis of the Silverdale Fund VCC's Private Placement Memorandum, Class Supplement of FMPA24 and Subscription Documents (together "the Offering Documents"). Past performance is not an indicator of future performance. The Fund uses leverage and invests in financial derivative instruments. Please refer to the Offering Documents for Risk Factors. This document is written for the benefit of and being communicated only to Accredited Investors or Institutional Investors as defined under the Securities and Futures Act (Cap. 289) of Singapore. Nothing in this document is intended to constitute legal, tax, securities or investment advice or opinion regarding the appropriateness of any investment; or a solicitation for any product or service. Please seek opinion from independent professional adviser before taking any decision based on this document. The NAV performance is computed taking: 1 month = 4 weeks, 3 months = 13 weeks, 6 months = 26 weeks, 9 months = 39 weeks, and 1 Year = 52 weeks. (\*\*) Assuming to be Business Day; (^) Indicative; (^\*) Based on Net Assets; (!) Minimum of US\$ 5,000; (1), (2), (3), & (4) Based on gross investments into securities. (1) Credit Rating is based on best of the three ratings (S&P/Moodys/Fitch); Fund Ranking source: Bloomberg's special report on Asia's Hedge Fund dated June 26, 2015;