



### FUND DESCRIPTION

Silverdale Bond Fund is a diversified portfolio of primarily investment grade short duration US dollar bonds, actively managed for enhanced returns.

### FUND ADVANTAGES

- Quality Assets: Investment Grade
- Short duration (1-3 years)
- No forex risk (US dollars only)
- Enhanced returns
- Leverage: non-recourse to investor
- Quarterly dividend distribution

### FUND INFORMATION

Fund	Silverdale Bond Fund
ACRA Regn. No.	T20VC0123D-SF002
MAS SRS No.	21CFOV10013
Umbrella Fund	Silverdale Fund VCC
Domicile	Singapore
Fund Currency	US Dollar
Strategy Launch Date <sup>A</sup>	9 Sep 2010
Weekly NAV Launch Dt	4 Oct 2013
Sub Fund Launch Date	1 Feb 2021
NAV Frequency	Weekly (Friday) <sup>B</sup>
Subscription/Redemption	Weekly (Monday) <sup>B</sup>
Management Fee	0.50% p.a. <sup>C</sup>
Previous Quarterly Dividend	US\$ 2.10 per share
Next Quarterly Dividend	US\$ 2.10 per share <sup>D</sup>
Next Dividend Record Date	31 March 2023
Trailing 12 mth Dividend	US\$ 8.40 per share

### AT A GLANCE

Net Assets (AUM)	US\$ 92 million
Net Loan	US\$ 116 million
Gross Investments <sup>5</sup>	US\$ 210 million
Investment Grade Bonds	75 %
Number of Securities	122
Max Single Security Exposure	2.86 %
Number of Countries	25
Max Single Country Exposure	28 %

### Distribution V Details

ISIN	SGXZ56141039
Bloomberg Code	SILV01D SP
Initial Sales Charge	0.00%
Exit Load	0.25%
Contingent Load	5% / 4% / 3% / 2% / 1%

Silverdale Bond Fund targets enhanced investor returns with relatively lower volatility. During the month ended 30th December 2022, the Fund NAV increased by 3.29% to Cum-Dividend NAV at US\$ 80.12 (previous month: US\$ 77.57), as against Bloomberg EM Asia USD Credit Corporate Index which increased by 5.43% and Bloomberg EM USD Corp and Quasi 1-3Yr Index which increased by 2.05%. The Fund has paid 31st Quarterly Dividend of US\$ 2.10 per share resulting in the Ex-Dividend NAV of US\$ 78.02. The Fund reported portfolio yield (post-leverage) of 14.54% per annum (previous month: 18.37% p.a.), with average duration of 1.62 years (previous month: 1.57 years).

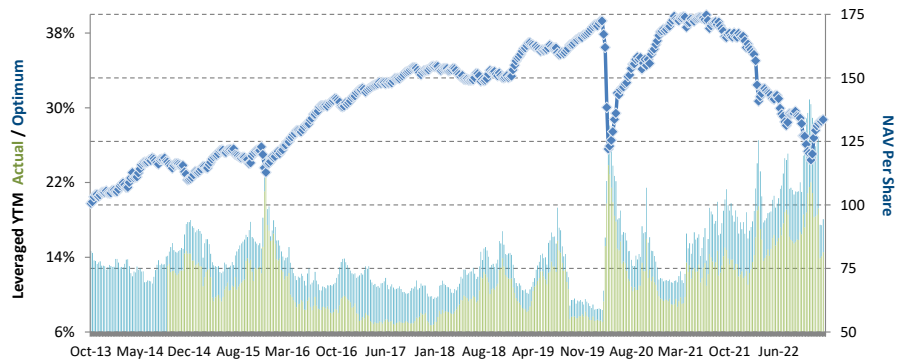
**PORTFOLIO DASHBOARD** Accumulation NAV US\$ **133.5277** Distribution NAV US\$ **78.0202**

### PERFORMANCE (net of fees and expense)

Year to Date	-19.72 %
Trailing 4 weeks	1.84 %
Trailing 3 months (13 weeks)	5.04 %
Trailing 12 months (52 weeks)	-19.72 %
Trailing 3 years	-7.61 % p.a.
Trailing 5 years	-2.87 % p.a.
Trailing 7 years	1.93 % p.a.
Since 4 Oct 2013	3.12 % p.a.

### FUND STATISTICS

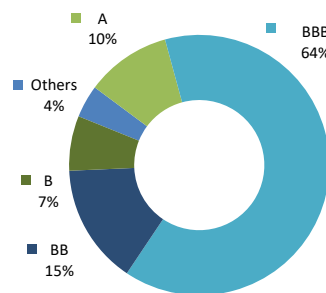
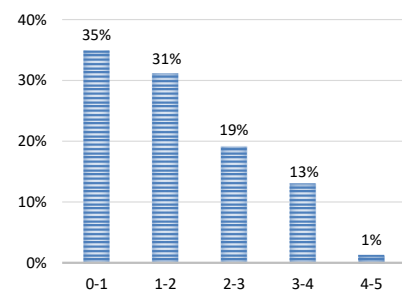
Portfolio Yield to Maturity <sup>F</sup>	9.17 %
Leveraged Yield to Maturity <sup>F</sup>	14.54 %
Average Coupon	5.38 %
Average Duration	1.62 years
Total Dividend Paid	US\$ 61.17



### NAV and POST-LEVERAGED YTM

Period	2013 <sup>E</sup>	2014	2015	2016	2017	2018	2019	2020	2021	2022 Q1	2022 Q2	2022 Q3	2022 Q4
Dividend	-	-	4.47	7.30	7.80	8.00	8.40	8.40	8.40	2.10	2.10	2.10	2.10
Return to Investor	4.06%	5.46%	6.08%	20.42%	9.16%	-2.24%	11.97%	0.00%	-1.26%	-13.49%	-5.66%	-6.35%	5.04%

### INVESTOR RETURN and DIVIDEND DISTRIBUTIONS

RATING PROFILE<sup>1</sup>PORTFOLIO DURATION<sup>2</sup>

### FUND MANAGER

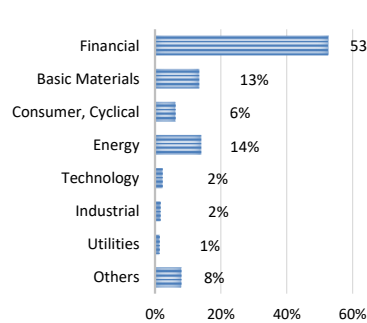
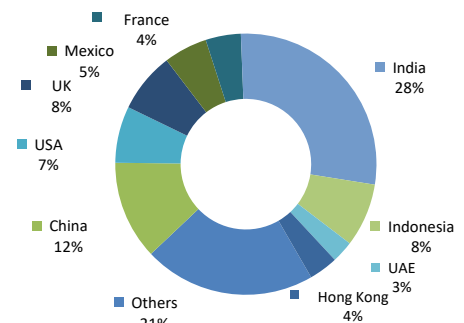
#### Silverdale Capital Pte Ltd

Licensed and regulated by Monetary Authority of Singapore (UEN# 200820921K)

8 Temasek Boulevard, #35-02 Suntec Tower-3, Singapore: 038988 • Tel: +65 6835 7130 • Email: ir@silverdalegroup.com



TOP 10 HOLDINGS <sup>3</sup>	% age
lfl Finance Ltd 2023	2.86 %
Pt Adaro Indonesia 2024	2.55 %
Adani Ports 2024	2.47 %
Bnp Paribas 2024	2.44 %
Esic Sukuk Ltd 2024	2.42 %
Elect Global Inv 2023	2.35 %
Indonesia Asahan 2025	2.35 %
Shriram Finance Ltd 2024	2.32 %
Phoenix Grp 2025	2.22 %
Bluestar Fin Holdings 2023	2.13 %

SECTORAL EXPOSURE<sup>4</sup>GEOGRAPHICAL EXPOSURE<sup>5</sup>

## FUND MANAGEMENT DETAILS

### THE FUND

#### Silverdale Bond Fund

is the Sub-Fund of Silverdale Fund VCC, (UEN # T20VC0123D) which is established as an umbrella fund under the Variable Capital Companies Act of Singapore.

### CUSTODIAN

Standard Chartered Bank (Singapore) Ltd

DBS Bank Ltd, Singapore

Credit Suisse AG, Singapore Branch

Bank Julius Baer, Singapore Branch

### FUND ADMINISTRATOR

NAV Fund Services (Singapore)

Private Limited

80 Robinson Road, #02-00, Singapore 068898

Tel.: +65 6856 7605

Email: VCC@SilverdaleGroup.com

### RISK PROFILE

NAV per share can go up as well as down and any capital invested in the fund may be at risk. The Fund uses leverage and derivatives for hedging or as part of its investment strategy which involve additional costs and risks. For further details, please refer to the Offering Documents.

## PORTFOLIO UPDATE

During the week ended 30th December 2022, Silverdale Bond Fund purchased SJM Holdings bonds. It also increased exposure to the iShares USD Treasury Bond 20+ years ETF.

For the month, the increase in the Fund NAV was led by increase in bond prices of Chinese, Indian and Hong Kong bonds, while partially offset by the decrease in prices of German bonds.

SJM Holdings (Mkt Cap: US\$ 4.4 bn) is the oldest Macau casino company with operations across 6 casinos and 14 satellite casinos. As of September 2022, it reported gross gaming revenue of US\$ 642.9mn, cash balance of US\$ 581mn, and gross debt of US\$ 3.4bn. It is 53.9% owned by the Ho family via Sociedade de Turismo e Diversões de Macau (STDM). In 2022, it has raised over US\$ 380mn in equity and US\$ 260mn in debt from its largest shareholder.

Silverdale Bond Fund continues to be positioned defensively, with 75% of its portfolio being high quality Investment Grade bonds, a short duration of 1.62 years, yet has leveraged YTM of 14.54%, pointing towards potential higher returns, in the coming months.

Please refer to Silverdale Funds December '22 Monthly Commentary for further details.

## HOW TO INVEST

Please ask your private bank/distributor to subscribe to Silverdale Bond Fund as per terms of the Offering Documents (quoting the relevant ISIN). Should you seek any support, please: email Fund Administrator at [VCC@SilverdaleGroup.com](mailto:VCC@SilverdaleGroup.com), or Fund Manager at [IR@SilverdaleGroup.com](mailto:IR@SilverdaleGroup.com)

## FUND MANAGER

### Silverdale Capital Pte Ltd

Licensed and regulated by Monetary Authority of Singapore (UEN# 200820921K)

8 Temasek Boulevard, #35-02 Suntec Tower-3, Singapore: 038988 ■ Tel: +65 6835 7130 ■ Email: [IR@SilverdaleGroup.com](mailto:IR@SilverdaleGroup.com)



## RISK FACTORS

**Interest Rate Risk:** The increase (fall) in value of fixed income securities with fall (increase) in interest rate. **Credit Risk:** The ability of the issuer to redeem the bonds (or other securities) on maturity. **Liquidity Risk:** The ability to sell a bond before its redemption. **Counterparty Risk:** The risk due to failure of the counterparty dealt with. **Country Risk:** The investment strategy is subject to the risks relating to the geographical, political, economic and social issues of the country of the Issuer, and to a lesser extent that of United States. **Leverage/Derivatives Risk:** Disproportionately large change in value of securities due to relatively small change in determinant.

## DISCLAIMER

The above commentary does not provide a complete analysis of every material fact regarding the market, industry, security, portfolio or the fund. It is not a recommendation to buy or sell any security nor an investment advice. The portfolio holdings, opinions and information may change without notice. The contents of this document, including any narrative does not constitute an offer to sell or a solicitation of any offer to buy the units or shares in Silverdale Bond Fund, or any other fund managed or advised by Silverdale Capital Pte Ltd., and is strictly for information only. Any subscription for units or shares must be made solely on the basis of Silverdale Bond Fund's Offering Documents (that is, the Constitution, Private Placement Memorandum, and Subscription Forms of Silverdale Fund VCC, and Sub-Fund Supplement of Silverdale Bond Fund). Past performance is not an indicator of future performance. Opinions and estimates contained in this document are subject to change without notice, and the actual results would differ from the said opinions and estimates. The Fund uses/ invests in financial derivative instruments. Please refer to the Offering Documents for Risk Factors. This document is written for the benefit of and being communicated only to Accredited Investors or Institutional Investors as defined under the Securities and Futures Act (Cap. 289) of Singapore. The recipient should obtain opinion from independent professional adviser before making any decision based on this document. The NAV performance is computed taking: 1 month = 4 weeks, 3 months = 13 weeks, 6 months = 26 weeks, 9 months = 39 weeks, 12 months = 52 weeks, 3 years = 156 weeks and 5 years = 260 weeks; where attributable NAV is not available, the latest available NAV is taken for computation. NAV prior to 8 May 2015 is based on NAV of Sri Silverdale Opportunities Fund (Class-E); and NAV for the period 8 May 2015 to 23 April 2021 is that of Silverdale Fund SPC SP-1 managed by the same fund management team without change in strategy. Payment of Dividend results in equivalent amount of drop in the NAV of the Fund. (A) Initially launched as multi-assets fund with quarterly NAV. (B) Assuming to be a Business Day. (C) Based on net AUM. (D) Indicative. (E) For the period 4 Oct 2013 to 27 Dec 2013. (F) Yield to Maturity excludes bonds trading less than 20 cents to a dollar while it reflects the current yield of the bond for bonds trading between 20-50 cents to a dollar. (1), (2), (3), (4) & (5) are based on gross investments into securities. (1) Credit Rating is based on best of the three ratings (S&P/Moody's/Fitch); Rating exposure of less than 3% has been clubbed as "Others"; unless otherwise specified. (4) Sector exposure of less than 3% has been clubbed as 'Others'; unless otherwise specified. (5) Country exposure of less than 3% has been clubbed as 'Others'; unless otherwise specified. (6) Gross Investments is aggregation of AUM and Net Loans and cash on hand. Ranking source: Bloomberg's special report on Asia's Hedge Fund dated June 26, 2015; category: Multi Strategy. (++) Sharpe Ratio: Source Bloomberg.