



PROUDLY FROM SINGAPORE



BEST FUND PROVIDER INVESTMENT GRADE BOND

Silverdale Bond Fund

INVESTMENT GRADE | SHORT DURATION | ASIA TLT

432nd Weekly Factsheet as at 18th February 2022

FUND DESCRIPTION

Silverdale Bond Fund is a diversified portfolio of primarily investment grade short duration US dollar bonds, actively managed for enhanced returns.

FUND ADVANTAGES

- Quality Assets: Investment Grade
- Short duration (1-3 years)
- No forex risk (US dollars only)
- Enhanced returns, non-recourse financing
- Quarterly dividend distribution

FUND INFORMATION

Fund	Silverdale Bond Fund
ACRA Regn. No.	T20VC0123D-SF002
MAS SRS No.	21CFOV10013
Umbrella Fund	Silverdale Fund VCC
Domicile	Singapore
Fund Currency	US Dollar
Strategy Launch Date ^A	9 Sep 2010
Weekly NAV Launch Dt	4 Oct 2013
Sub Fund Launch Date	1 Feb 2021
NAV Frequency	Weekly (Friday) ^B
Subscription/Redemption	Weekly (Monday) ^B
Management Fee	0.50% p.a. ^C
Previous Quarterly Dividend	US\$ 2.10 per share
Next Quarterly Dividend	US\$ 2.10 per share ^D
Next Dividend Record Date	25 March 2022
Trailing 12 mth Dividend	US\$ 8.40 per share

PORTFOLIO DASHBOARD

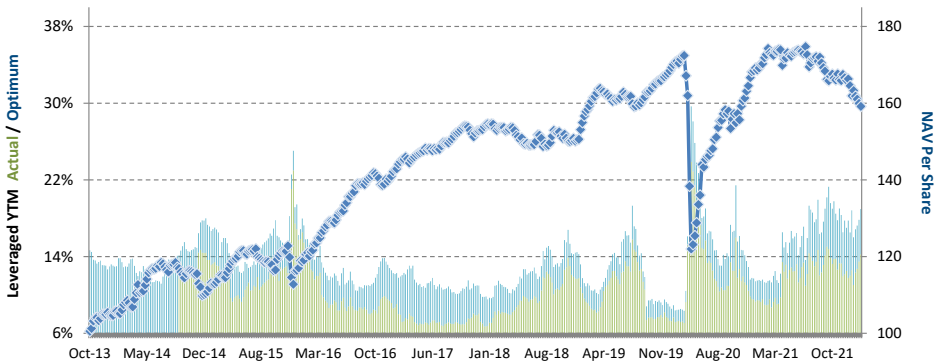
Accumulation NAV US\$ **159.1450** Distribution NAV US\$ **102.9049**

PERFORMANCE *(net of fees and expense)*

Year to Date	-4.32 %
Trailing 4 weeks	-2.53 %
Trailing 3 months (13 weeks)	-5.07 %
Trailing 12 months (52 weeks)	-8.67 %
Trailing 3 years	-0.28 % p.a.
Trailing 5 years	1.74 % p.a.
Since 4 Oct 2013	5.63 % p.a.

FUND STATISTICS

Portfolio Yield to Maturity	6.21 %
Leveraged Yield to Maturity	14.22 %
Average Coupon	4.98 %
Average Duration	1.86 years
Total Dividend Paid	US\$ 52.77



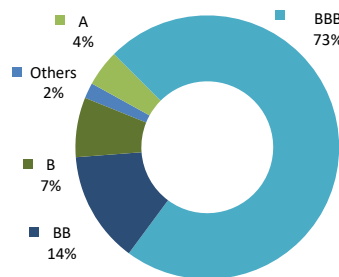
NAV and POST-LEVERAGED YTM

Period	2013 ^E	2014	2015	2016	2017	2018	2019	2020	2021	2021 Q1	2021 Q2	2021 Q3	2021 Q4
Dividend	-	-	4.47	7.30	7.80	8.00	8.40	8.40	8.40	2.10	2.10	2.10	2.10
Return to Investor	4.06%	5.46%	6.08%	20.42%	9.16%	-2.24%	11.97%	0.00%	-1.26%	3.02%	0.00%	-2.44%	-1.76%

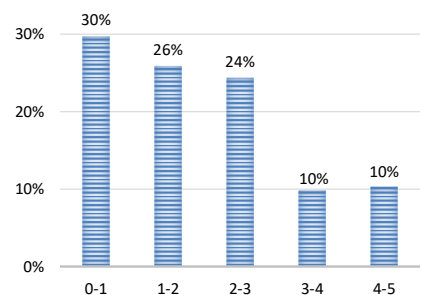
AT A GLANCE

Net Assets (AUM)	US\$ 131 million
Net Loan	US\$ 195 million
Gross Investments ⁶	US\$ 327 million
Investment Grade Bonds	77 %
Number of Securities	115
Max Single Security Exposure	3.00 %
Number of Countries	23
Max Single Country Exposure	25 %

INVESTOR RETURN and DIVIDEND DISTRIBUTIONS



RATING PROFILE¹



PORTFOLIO DURATION²

FUND MANAGER

Silverdale Capital Pte Ltd

Licensed and regulated by Monetary Authority of Singapore (UEN# 200820921K)

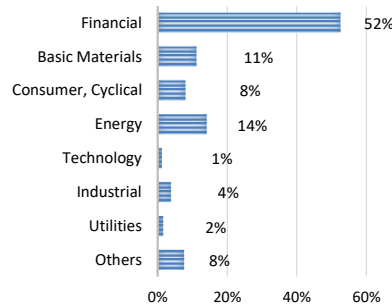
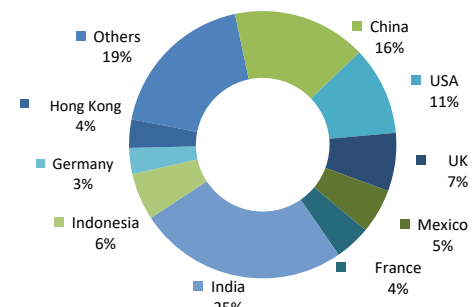
8 Temasek Boulevard, #35-02 Suntec Tower-3, Singapore: 038988 • Tel: +65 6835 7130 • Email: ir@silverdalegroup.com



PLEASE REFER OVERLEAF FOR IMPORTANT DISCLOSURES & RISK FACTORS

TOP 10 HOLDINGS³

	% age
Prospect Capital 2023	3.00 %
At Securities Bv 2023	2.85 %
Pt Adaro Indonesia 2024	2.80 %
Citadel Lp 2022	2.78 %
liff Finance Ltd 2023	2.76 %
Elect Global Inv 2023	2.76 %
Chang Development 2022	2.64 %
Phoenix Grp 2025	2.54 %
Adani Ports 2027	2.42 %
Petroleos Mexicano 2026	2.36 %


SECTORAL EXPOSURE⁴

GEOGRAPHICAL EXPOSURE⁵

FUND MANAGEMENT DETAILS THE FUND

Silverdale Bond Fund

is the Sub-Fund of Silverdale Fund VCC, (UEN # T20VC0123D) which is established as an umbrella fund under the Variable Capital Companies Act of Singapore.

CUSTODIAN

Standard Chartered Bank (Singapore) Ltd
DBS Bank Ltd, Singapore
Credit Suisse AG, Singapore Branch
Bank Julius Baer, Singapore Branch

FUND ADMINISTRATOR

NAV Fund Services (Singapore)

Private Limited

80 Robinson Road, #02-00, Singapore 068898

Tel.: +65 6856 7605

Email: VCC@SilverdaleGroup.com

RISK PROFILE

NAV per share can go up as well as down and any capital invested in the fund may be at risk. The Fund uses leverage and derivatives for hedging or as part of its investment strategy which involve additional costs and risks. For further details, please refer to the Offering Documents.

PORTFOLIO UPDATE

During the week ended 18th February 2022, Silverdale Bond Fund sold Muthoot bonds while it purchased Vedanta and Vivo Energy bonds. It reduced its exposure to Sino Ocean bonds as it opportunistically switched to lower cash price bonds.

Vedanta Resources, through its circa 70% ownership in Vedanta Limited, is the leading natural resources company in India with interests in zinc, lead, silver, copper, iron ore, aluminium, power and oil & gas with Zinc contributing almost half of its EBITDA. As of September 2021, it reported net debt of US\$ 11.4bn, EBITDA of US\$ 5.2bn with Net Debt to EBITDA of 2.2x and interest coverage ratio of 4.7x.

Vivo Energy PLC (market cap USD 2.3bn) is a leading retailer and distributor of Shell and Engen-branded fuel and lubricants in 23 countries across Africa. As of June 2021, it recorded LTM revenue of US\$ 7.5bn, EBITDA of US\$ 389mn and net debt of US\$ 337mn, implying Net Debt to EBITDA of 0.9x and Interest Coverage ratio of 6.6x.

HOW TO INVEST

Please ask your private bank/distributor to subscribe to Silverdale Bond Fund as per terms of the Offering Documents (quoting the relevant ISIN). Should you seek any support, please: email Fund Administrator at VCC@SilverdaleGroup.com, or Fund Management Company at IR@SilverdaleGroup.com

FUND MANAGER

Silverdale Capital Pte Ltd

Licensed and regulated by Monetary Authority of Singapore (UEN# 200820921K)

8 Temasek Boulevard, #35-02 Suntec Tower-3, Singapore: 038988 ■ Tel: +65 6835 7130 ■ Email: IR@SilverdaleGroup.com



RISK FACTORS

Interest Rate Risk: The increase (fall) in value of fixed income securities with fall (increase) in interest rate. **Credit Risk:** The ability of the issuer to redeem the bonds (or other securities) on maturity. **Liquidity Risk:** The ability to sell a bond before its redemption. **Counterparty Risk:** The risk due to failure of the counterparty dealt with. **Country Risk:** The investment strategy is subject to the risks relating to the geographical, political, economic and social issues of the country of the Issuer, and to a lesser extent that of United States. **Leverage/Derivatives Risk:** Disproportionately large change in value of securities due to relatively small change in determinant.

DISCLAIMER

The above commentary does not provide a complete analysis of every material fact regarding the market, industry, security, portfolio or the fund. It is not a recommendation to buy or sell any security nor an investment advice. The portfolio holdings, opinions and information may change without notice. The contents of this document, including any narrative does not constitute an offer to sell or a solicitation of any offer to buy the units or shares in Silverdale Bond Fund, or any other fund managed or advised by Silverdale Capital Pte Ltd., and is strictly for information only. Any subscription for units or shares must be made solely on the basis of Silverdale Bond Fund's Offering Documents (that is, the Constitution, Private Placement Memorandum, and Subscription Forms of Silverdale Fund VCC, and Sub-Fund Supplement of Silverdale Bond Fund). Past performance is not an indicator of future performance. Opinions and estimates contained in this document are subject to change without notice, and the actual results would differ from the said opinions and estimates. The Fund uses/invests in financial derivative instruments. Please refer to the Offering Documents for Risk Factors. This document is written for the benefit of and being communicated only to Accredited Investors or Institutional Investors as defined under the Securities and Futures Act (Cap. 289) of Singapore. The recipient should obtain opinion from independent professional adviser before making any decision based on this document. The NAV performance is computed taking: 1 month = 4 weeks, 3 months = 13 weeks, 6 months = 26 weeks, 9 months = 39 weeks, 12 months = 52 weeks, 3 years = 156 weeks and 5 years = 260 weeks; where attributable NAV is not available, the latest available NAV is taken for computation. NAV prior to 8 May 2015 is based on NAV of Sri Silverdale Opportunities Fund (Class-E); and NAV for the period 8 May 2015 to 23 April 2021 is that of Silverdale Fund SPC SP-1 managed by the same fund management team without change in strategy. Payment of Dividend results in equivalent amount of drop in the NAV of the Fund. (A) Initially launched as multi-assets fund with quarterly NAV. (B) Assuming to be a Business Day. (C) Based on net AUM. (D) Indicative. (E) For the period 4 Oct 2013 to 27 Dec 2013. (1), (2), (3), (4) & (5) are based on gross investments into securities. (1) Credit Rating is based on best of the three ratings (S&P/Moody's/Fitch); Rating exposure of less than 3% has been clubbed as "Others"; unless otherwise specified. (4) Sector exposure of less than 3% has been clubbed as "Others"; unless otherwise specified. (5) Country exposure of less than 3% has been clubbed as "Others"; unless otherwise specified. (6) Gross Investments is aggregation of AUM and Net Loans and cash on hand. Ranking source: Bloomberg's special report on Asia's Hedge Fund dated June 26, 2015; category: Multi Strategy. (††) Sharpe Ratio: Source Bloomberg.