



ingenious engineering



BEST FUND PROVIDER INVESTMENT GRADE BOND

Silverdale Bond Fund

PROUDLY FROM SINGAPORE

396th Weekly Factsheet as at 11th June 2021

FUND DESCRIPTION

Silverdale Bond Fund is a diversified portfolio of primarily investment grade short duration US dollar bonds, actively managed for enhanced returns.

FUND ADVANTAGES

- Quality Assets: Investment Grade
- Short duration (1-3 years)
- No forex risk (US dollars only)
- Enhanced returns, non-recourse financing
- Quarterly dividend distribution

FUND INFORMATION

| | |
|--|----------------------------------|
| Fund | Silverdale Bond Fund |
| ACRA Regn. No. | T20VC0123D-SF002 |
| MAS SRS No. | 21CFOV10013 |
| Umbrella Fund | Silverdale Fund VCC |
| Domicile | Singapore |
| Fund Currency | US Dollar |
| Inception Date [†] | 9 Sep 2010 |
| Weekly NAV Launch Date | 4 Oct 2013 |
| Sub Fund Launch Date | 1 Feb 2021 |
| NAV Frequency | Weekly (Friday)* |
| Subscription/Redemption Management Fee | Weekly (Monday)* 0.50% p.a.^ |
| Last Quarterly Dividend | US\$ 2.10 per share |
| Next Quarterly Dividend | US\$ 2.10 per share [#] |
| Next Dividend Date | 25 June 2021 |
| Trailing 12 mth Dividend | US\$ 8.40 per share |

Silverdale Bond Fund generates enhanced investor returns with low volatility, while actively managing the portfolio duration. During the week ended 11th June 2021, the Fund NAV appreciated by 0.18% to US\$ 118.75 (previous week: US\$ 118.54), with actual portfolio yield (post-leverage) of 13.21% per annum (previous week: 12.50% p.a.), and average duration of 1.76 years (previous week: 1.74 years).

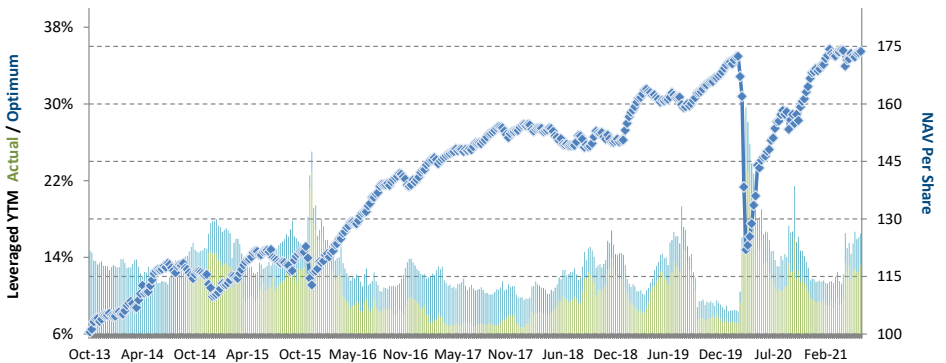
PORTFOLIO DASHBOARD Accumulation NAV US\$ **173.6741** Distribution NAV US\$ **118.7482**

PERFORMANCE (net of fees and expense)

| | |
|-------------------------------|--------------|
| Year to Date | 3.11 % |
| Trailing 4 weeks | 0.66 % |
| Trailing 3 months (13 weeks) | 0.71 % |
| Trailing 12 months (52 weeks) | 21.18 % p.a. |
| Trailing 3 years | 5.12 % p.a. |
| Trailing 5 years | 5.67 % p.a. |
| Since 4 Oct 2013 | 7.36 % p.a. |

FUND STATISTICS

| | |
|-----------------------------|------------|
| Portfolio Yield to Maturity | 5.86 % |
| Leveraged Yield to Maturity | 13.21 % |
| Average Coupon | 5.00 % |
| Average Duration | 1.76 years |
| Total Dividend Paid | US\$ 46.47 |



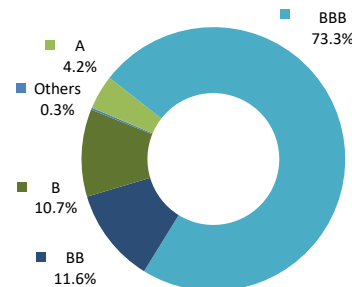
NAV and POST-LEVERAGED YTM

| Period | 2013 ^A | 2014 | 2015 | 2016 | 2017 | 2018 | 2019 | 2020 | Apr'20-Jun'20 ^C | Jul'20-Sep'20 | Oct'20-Dec'20 | Jan'21-Mar'21 |
|--------------------|-------------------|-------|-------|--------|-------|--------|--------|-------|----------------------------|---------------|---------------|---------------|
| Dividend | - | - | 4.47 | 7.30 | 7.80 | 8.00 | 8.40 | 8.40 | 2.10 | 2.10 | 2.10 | 2.10 |
| Return to Investor | 4.06% | 5.46% | 6.08% | 20.42% | 9.16% | -2.24% | 11.97% | 0.00% | 5.64% | 4.98% | 9.80% | 3.02% |

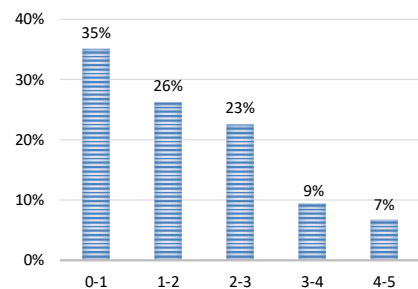
AT A GLANCE

| | |
|--------------------------------|------------------|
| Net Assets (AUM) | US\$ 174 million |
| Net Loan | US\$ 258 million |
| Gross Investments ⁶ | US\$ 434 million |
| Investment Grade Bonds | 77 % |
| Number of Securities | 110 |
| Max Single Security Exposure | 3.03 % |
| Number of Countries | 22 |
| Max Single Country Exposure | 29 % |

INVESTOR RETURN and DIVIDEND DISTRIBUTIONS



RATING PROFILE¹



PORTFOLIO DURATION²

SHARE CLASS AVAILABLE

| SHARE CLASS | ISIN |
|----------------------|--------------|
| Accumulation | SGXZ66077579 |
| Distribution | SGXZ84696368 |
| Institutional (Acc) | SGXZ79922928 |
| Institutional (Dist) | SGXZ76188929 |
| Accumulation III | SGXZ95348165 |
| Distribution III | SGXZ10242964 |
| Accumulation V | SGXZ65114738 |
| Distribution V | SGXZ56141039 |
| Distribution K | SGXZ52285178 |

FUND MANAGER

Silverdale Capital Pte Ltd

Licensed and regulated by Monetary Authority of Singapore (UEN# 200820921K)

8 Temasek Boulevard, #35-02 Suntec Tower-3, Singapore: 038988 • Tel: +65 6835 7130 • Email: ir@silverdalegroup.com



PLEASE REFER OVERLEAF FOR IMPORTANT DISCLOSURES & RISK FACTORS

Silverdale

Fund Management

ingenious engineering

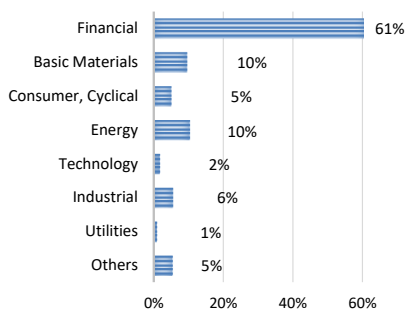
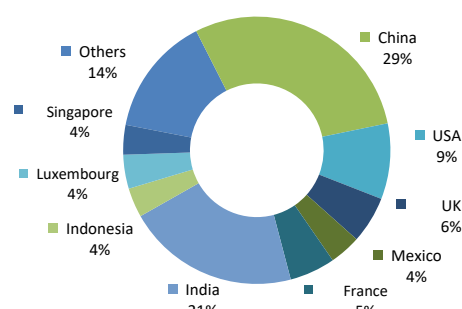
BEST FUND PROVIDER
INVESTMENT GRADE BOND**Silverdale Bond Fund**

PROUDLY FROM SINGAPORE

396th Weekly Factsheet as at 11th June 2021

TOP 10 HOLDINGS³

| | % age |
|----------------------------|--------|
| Pt Adaro Indonesia 2022 | 3.03 % |
| Citadel Lp 2022 | 2.96 % |
| Halcyon Agri 2025 | 2.67 % |
| Bnp Paribas 2024 | 2.61 % |
| Phoenix Grp 2025 | 2.51 % |
| Shriram Transport 2022 | 2.43 % |
| Far East Horizon 2021 | 2.36 % |
| Prospect Capital 2023 | 2.33 % |
| At Securities Bv 2023 | 2.29 % |
| Bluestar Fin Holdings 2023 | 2.27 % |

SECTORAL EXPOSURE⁴GEOGRAPHICAL EXPOSURE⁵**FUND MANAGEMENT DETAILS****THE FUND****Silverdale Bond Fund**

is the Sub-Fund of Silverdale Fund VCC, (UEN # T20VCO123D) which is established as an umbrella fund under the Variable Capital Companies Act of Singapore.

CUSTODIAN**Standard Chartered Bank (Singapore) Ltd****DBS Bank Ltd, Singapore****Credit Suisse AG, Singapore Branch****Bank Julius Baer, Singapore Branch****FUND ADMINISTRATOR****NAV Fund Services (Singapore)****Private Limited**

80 Robinson Road, #02-00, Singapore 068898

Tel.: +65 6856 7605

Email: VCC@SilverdaleGroup.com

RISK PROFILE

NAV per share can go up as well as down and any capital invested in the fund may be at risk. The Fund uses leverage and derivatives for hedging or as part of its investment strategy which involve additional costs and risks. For further details, please refer to the Offering Documents.

PORTFOLIO UPDATE

During the week ended 11th June 2021, the Fund purchased NagaCorp Ltd and Tata Motors bonds. We also received proceeds from maturity of Vedanta bonds.

NagaCorp Ltd (Mkt Cap: US\$ 4.3bn) is a casino operator which owns Nagaworld - the largest casino in Cambodia. NagaWorld has a monopolistic position within a 200km radius of Phnom Penh ("Designated Area") up to 2045. It has close to 1,700 guest rooms, 600 gaming tables and more than 5,000 gaming machines. Further the group has a casino under construction in Russia. As of FY 2020, the group reported total revenue of US\$ 879mn, net debt of US\$ 198mn and EBITDA of US\$ 261mn resulting in net leverage of 0.75x and interest coverage of 7.85x. The group is 66.8% owned by NagaCorp CEO & Founder Tan Sri Dr. Chen Lip Keong.

Tata Motors Limited (Market Cap: US\$ 16.9bn) is the flagship automotive company of India's largest conglomerate, Tata Sons. Incorporated in 1945, Tata Motors is the largest manufacturer of commercial and passenger vehicles in India. The company's products include light, medium and heavy vehicles, such as trucks, pick-ups and buses, utility vehicles and passenger cars. For FY21, company reported consolidated sales of US\$ 34bn, adjusted EBITDA of US\$ 4.2bn, Net leverage at 1.4x and Interest coverage at 3.8x.

DIVIDEND DETAILS

The Fund has is likely to declare Twenty-Fifth Quarterly Dividend of US\$ 2.10 per share on Distributing Class Shares held on Friday, 25th June 2021 (Dividend Record Date). All investors holding shares on Friday, 18th June 2021 (Dividend Record Date) have been paid dividend.

HOW TO INVEST

Please ask your private bank/distributor to subscribe to Silverdale Bond Fund as per terms of the Offering Documents (quoting the relevant ISIN). Should you seek any support, please: email Fund Administrator at VCC@SilverdaleGroup.com, or Fund Management Company at IR@SilverdaleGroup.com

FUND MANAGER**Silverdale Capital Pte Ltd**

Licensed and regulated by Monetary Authority of Singapore (UEN# 200820921K)

8 Temasek Boulevard, #35-02 Suntec Tower-3, Singapore: 038988 ▪ Tel: +65 6835 7130 ▪ Email: IR@SilverdaleGroup.com**RISK FACTORS**

Interest Rate Risk: The increase (fall) in value of fixed income securities with fall (increase) in interest rate. **Credit Risk:** The ability of the issuer to redeem the bonds (or other securities) on maturity. **Liquidity Risk:** The ability to sell a bond before its redemption. **Counterparty Risk:** The risk due to failure of the counterparty deal with. **Country Risk:** The investment strategy is subject to the risks relating to the geographical, political, economic and social issues of the country of the issuer, and to a lesser extent that of United States. **Leverage/Derivatives Risk:** Disproportionately large change in value of securities due to relatively small change in determinant.

DISCLAIMER

The above commentary does not provide a complete analysis of every material fact regarding the market, industry, security, portfolio or the fund. It is not a recommendation to buy or sell any security nor an investment advice. The portfolio holdings, opinions and information may change without notice. The contents of this document, including any narrative does not constitute an offer to sell or a solicitation of any offer to buy the units or shares in Silverdale Bond Fund, or any other fund managed or advised by Silverdale Capital Pte Ltd., and is strictly for information only. Any subscription for units or shares must be made solely on the basis of Silverdale Bond Fund's Offering Documents (that is, the Constitution, Private Placement Memorandum, and Subscription Forms of Silverdale Fund VCC, and Sub-Fund Supplement of Silverdale Bond Fund). Past performance is not an indicator of future performance. Opinions and estimates contained in this document are subject to change without notice, and the actual results would differ from the said opinions and estimates. The Fund uses/invests in financial derivative instruments. Please refer to the Offering Documents for Risk Factors. This document is written for the benefit of and being communicated only to Accredited Investors or Institutional Investors as defined under the Securities and Futures Act (Cap. 289) of Singapore. The recipient should obtain opinion from independent professional adviser before making any decision based on this document. The NAV performance is computed taking: 1 month = 4 weeks, 3 months = 13 weeks, 6 months = 26 weeks, 9 months = 39 weeks, 12 months = 52 weeks, 3 years = 156 weeks and 5 years = 260 weeks; where attributable NAV is not available, the latest available NAV is taken for computation. NAV prior to 8 May 2015 is based on NAV of Sri Silverdale Opportunities Fund (Class-E); and NAV for the period 8 May 2015 to 23 April 2021 is that of Silverdale Fund SPC SP-1 managed by the same fund management team without change in strategy. Payment of Dividend results in equivalent amount of drop in the NAV of the Fund. (*) Assuming to be a Business Day. (#) Indicative. (†) Initially launched as multi-assets fund with quarterly NAV. (1), (2), (3), (4) & (5) are based on gross investments into securities. (1) Credit Rating is based on best of the three rating: (S&P/Moody's/Fitch); Rating exposure of less than 2% has been clubbed as "Others"; unless otherwise specified. (4) Sector exposure of less than 3% has been clubbed as "Others"; unless otherwise specified. (5) Country exposure of less than 3% has been clubbed as "Others"; unless otherwise specified. (6) Gross Investments is aggregation of AUM and Net Loans and cash on hand. (^(A)) Based on net AUM. Ranking source: Bloomberg's special report on Asia's Hedge Fund dated June 26, 2015; category: Multi Strategy. (††) Sharpe Ratio: Source Bloomberg. (A) For the period 4 Oct 2013 to 27 Dec 2013. (B) For the period 27 Dec 2019 to 13 March 2020; (C) For the period 13 March 2020 to 26 June 2020.