

Silverdale Bond Fund

340th Weekly Factsheet as at 15th May 2020

FUND DESCRIPTION

Silverdale Bond Fund is a diversified portfolio of primarily investment grade short duration US dollar bonds, actively managed for enhanced returns.

FUND ADVANTAGES

- Quality Assets: Investment Grade
- Short duration (2-3 years)
- No forex risk (US dollars only)
- Enhanced returns, non-recourse leverage
- Quarterly dividend distribution

FUND INFORMATION

Fund	Silverdale Fund SP-1
Fund Type	Segregated Portfolio Co
Domicile	Cayman Islands
Fund Currency	US Dollar
Inception Date [†]	9 Sep 2010
Weekly NAV Launch Date	4 Oct 2013
Cayman Launch Date	8 May 2015
NAV Computation	Weekly (Friday)**
Subscription/Redemption	Weekly (Monday)**
Management Fee	0.50% p.a.^
Next Quarterly Dividend	US\$ 2.10 per share [#]
Next Dividend Date	29 May 2020
Trailing 12 mth Dividend	US\$ 6.30 per share
Sales Registration	Singapore, Taiwan, United Kingdom, UAE and Australia

AT A GLANCE

Net Assets (AUM)	US\$ 159 million
Net Loan	US\$ 216 million
Gross Investments	US\$ 378 million
Gross Book ⁶	US\$ 594 million
Investment Grade Bonds	72.06 %
Number of Securities	118
Max Single Security Exposure	3.27 %
Number of Countries	23
Max Single Country Exposure	25 %

SHARE CLASS AVAILABLE

SHARE CLASS	ISIN
Silverdale Fund SP1A	KYG8135U1076
Silverdale Fund SP1B	KYG8135U1159
Silverdale Fund SP1C	KYG8135U2066
Silverdale Fund SP1D	KYG8135U2306
Silverdale Fund SP1E	KYG8135U2488
Silverdale Fund SP1F	KYG8135U2553
Silverdale Fund SP1K	KYG8135U2975
Silverdale Fund SP1H	KYG8135U2892

Silverdale Bond Fund generates enhanced investor returns with low volatility, while actively managing the portfolio duration. During the week ended 15th May 2020 the Fund NAV appreciated by 2.71% to US\$ 96.83 (previous week: US\$ 94.27), with actual portfolio yield (post-leverage) at 19.89% per annum (previous week: 21.43% p.a.), and average duration of 1.87 years (previous week: 1.87 years).

PORTFOLIO DASHBOARD

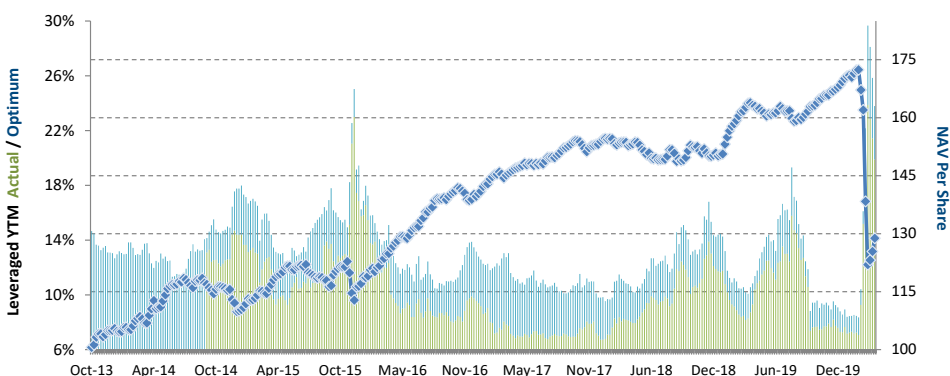
Accumulating NAV US\$ **128.7943** Distributing NAV US\$ **96.8285**

PERFORMANCE (net of fees)

Year to Date	-23.54 %
Previous Week	2.71 %
Trailing 3 months	-25.25 %
Trailing 12 months	-19.73 % p.a.
Trailing 3 years	-4.48 % p.a.
Trailing 5 years	1.16 % p.a.
Since 4 Oct 2013	3.81 % p.a.

FUND STATISTICS

Portfolio Yield to Maturity	9.05 %
Leveraged YTM - Actual	19.89 %
Leveraged YTM - Optimum	23.80 %
Average Coupon	5.49 %
Average Duration	1.87 years
Total Dividend Paid	US\$ 35.97

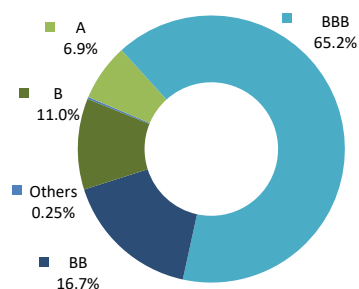


NAV and post-leverage YTM (net of fees)

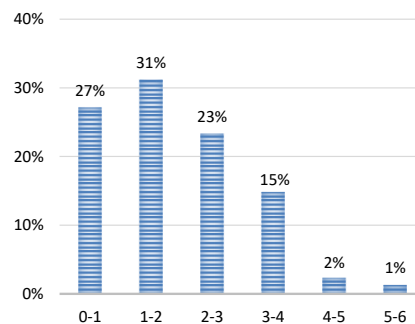
Period	2013*	2014	2015	2016	2017	2018	2019	Jan'19-Mar'19	Apr'19-Jun'19	Jul'19-Sep'19	Oct'19-Dec'19
Dividend	-	-	4.47	7.30	7.80	8.00	8.40	2.10	2.10	2.10	2.10
Return to Investor	4.06%	5.46%	6.08%	20.42%	9.16%	-2.24%	11.97%	8.92%	-0.58%	-0.01%	3.41%

2013* refers to Oct to Dec 2013

Investor Return and Dividend Distributions



RATING PROFILE¹



PORTFOLIO DURATION²

FUND MANAGER

Silverdale Capital Pte Ltd

Regulated by Monetary Authority of Singapore (UEN# 200820921K)

8 Temasek Boulevard, #35-02 Suntec Tower-3, Singapore: 038988 ■ Tel: +65 6835 7130 ■ Email: ir@silverdalegroup.com



PLEASE REFER OVERLEAF FOR IMPORTANT DISCLOSURES & RISK FACTORS

Silverdale Bond Fund

340th Weekly Factsheet as at 15th May 2020

TOP 10 HOLDINGS³

	% age
Citadel Lp 2022	3.27 %
Indusind Bank 2022	3.22 %
Samvardhana 2021	3.12 %
Vedanta Resources 2021	2.97 %
Braskem Finance 2022	2.81 %
Bnp Paribas 2024	2.69 %
Chang Development 2022	2.49 %
At Securities Bv 2023	2.36 %
Country Garden 2021	2.19 %
Dnb Bank Asa 2022	2.15 %

FUND MANAGEMENT DETAILS

THE FUND

Silverdale Bond Fund

is the segregated portfolio-1 (SP-1) of Silverdale Fund SPC, a Cayman Islands domiciled mutual fund, registered with Cayman Islands Monetary Authority

FUND ADMINISTRATOR

Vistra (Mauritius) Limited

Regulated by Financial Services Commission
3rd Floor, 355 NEX, Rue du Savoir, Cybercity
Ebene, Mauritius

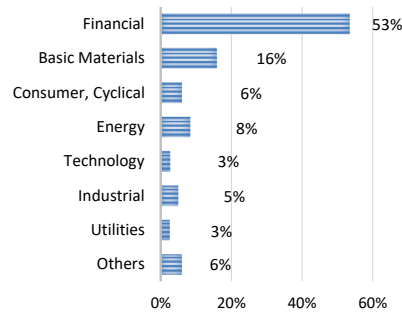
Tel.: +230 260 7275

Fax: +230 260 7001

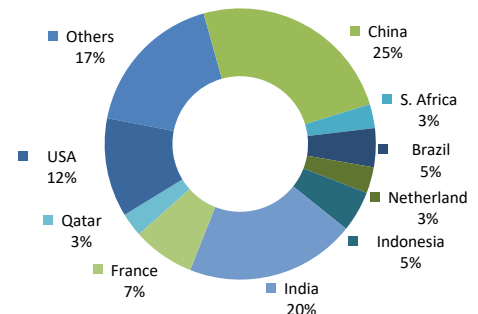
Email: spc@silverdalegroup.com

RISK PROFILE

NAV Per Share can go up as well as down and any capital invested in the fund may be at risk. The Fund uses leverage and derivatives for hedging or as part of its investment strategy which involve additional costs and risks. For further details, please refer to the Composite PPM.



SECTORAL EXPOSURE⁴



GEOGRAPHICAL EXPOSURE⁵

PORTFOLIO UPDATE

During the week ended 15th May 2020, we sold Shenzhen International bonds while we purchased Adani Ports (BBB-/Baa3/BBB-), Equate Petrochemical (BBB/Baa2/-), REC Limited (-/Baa3/BBB-) bonds. Further we received proceeds from tender of CPI Property bonds.

Adani Ports and Special Economic Zone Limited (Market Cap: US\$ 7.9bn) is the largest commercial port developer and operator in India when measured by volume, with coal and other dry bulk terminals having an annual capacity of 426 million tonnes. Long-term cargo from take-or-pay contracts contributes about 60% of total throughput. As of Mar 2020, it reported TTM revenue of US\$ 1.7bn, EBITDA of US\$ 1.1bn, net debt of US\$ 3.0bn resulting in net leverage of 2.8x and interest coverage ratio of 5.3x.

Equate Petrochemical Company (Equate) and The Kuwait Olefins Company (TKOC) collectively Equate Group is a petrochemical producer with production plants in Kuwait, Canada, USA and Germany. It contributes a significant portion of Kuwait's non-oil export revenues. As of December 2019, it reported TTM revenue of US\$ 3.3bn, EBITDA of US\$ 1.1bn and Net debt of US\$ 3.8bn resulting in net leverage of 3.4x & EBITDA Interest coverage of 5.5x. It is 85% owned by the Dow Chemical Company (42.5%) and Petrochemical Industries Company (42.5%), a subsidiary of government-owned Kuwait Petroleum Corporation.

Rural Electrification Corporation Limited (Mkt Cap: US\$ 2.5bn), is a power Infrastructure Finance Company in India. It is engaged in financing of transmission, distribution and generation segments. As of December 2019, they have consolidated assets of US\$ 40bn. It reported Net Interest Margin at 3.76% and Gross Non-Performing Assets (GNPA) at 6.4% with Provision coverage at 50.68%. It reported Capital Adequacy Ratio at 18.36% with Tier I at 15.44%.

HOW TO INVEST

Please ask your private bank/distributor to subscribe to Silverdale Bond Fund as per terms of the Composite PPM (quoting the relevant ISIN).

Should you seek any support, please: Call Fund Administrator at +230 2607 275, or Fund Management Company at +65 6835 7130 or Email: spc@silverdalegroup.com

FUND MANAGER

Silverdale Capital Pte Ltd

Regulated by Monetary Authority of Singapore (UEN# 200820921K)

8 Temasek Boulevard, #35-02 Suntec Tower-3, Singapore: 038988 • Tel: +65 6835 7130 • Email: ir@silverdalegroup.com



RISK FACTORS

Interest Rate Risk: The increase (fall) in value of fixed income securities with fall (increase) in interest rate. **Credit Risk:** The ability of the issuer to redeem the bonds (or other securities) on maturity. **Liquidity Risk:** The ability to sell a bond before its redemption. **Counterparty Risk:** The risk due to failure of the counterparty dealt with. **Country Risk:** The investment strategy is subject to the risks relating to the geographical, political, economic and social issues of the country of the Issuer, and to a lesser extent that of United States. **Leverage/Derivatives Risk:** Disproportionately large change in value of securities due to relatively small change in determinant.

DISCLAIMER

The above commentary does not provide a complete analysis of every material fact regarding the market, industry, security, portfolio or the fund. It is not a recommendation to buy or sell any security nor an investment advice. The portfolio holdings, opinions and information may change without notice. The contents of this document, including any narrative does not constitute an offer to sell or a solicitation of any offer to buy the units or shares in Silverdale Bond Fund (or Silverdale Fund SP-1), or any other segregated portfolio or Class of Silverdale Fund SPC or any of the funds managed or advised by Silverdale Capital Pte Ltd., and is strictly for information only. Any subscription for units or shares must be made solely on the basis of the fund's private placement memorandum, class supplements, application form and appendices (together "the Composite PPM"). Past performance is not an indicator of future performance. Opinions and estimates contained in this document are subject to change without notice, and the actual results would differ from the said opinions and estimates. The Fund uses/invests in financial derivative instruments. Please refer to the Composite PPM for Risk Factors. This document is written for the benefit of and being communicated only to Accredited Investors or Institutional Investors as defined under the Securities and Futures Act (Cap. 289) of Singapore or any similarly defined investor in any other securities legislation. The recipient should obtain opinion from independent professional adviser before making any decision based on this document. The NAV performance is computed taking: 1 month = 4 weeks, 3 months = 13 weeks, 6 months = 26 weeks, 9 months = 39 weeks, 12 months = 52 weeks, 3 years = 156 weeks and 5 years = 260 weeks. NAV prior to 8 May 2015 is based on NAV of underlying fund (Class E of Sri Silverdale Opportunities Fund). Payment of Dividend results in equivalent amount of drop in the NAV of the Fund. (**) Assuming to be Business Day. (#) Indicative. (†) Initially launched as multi-assets fund with quarterly NAV. (1), (2), (3), (4) & (5) Based on gross investments into securities. (1) Credit Rating is based on best of the three ratings (S&P/Moodys/Fitch); Rating exposure of less than 4% has been clubbed as "Others". (4) Sector exposure of less than 5% has been clubbed as 'Others'. (5) Country exposure of less than 3.5% has been clubbed as 'Others'. (6) Gross Book is aggregation of Gross Investments and Loans (net of cash). (**) Based on Gross Assets. Ranking source: Bloomberg's special report on Asia's Hedge Fund dated June 26, 2015; category: Multi Strategy. (††) Sharpe Ratio: Source Bloomberg.