



## Silverdale Bond Fund

324th Weekly Factsheet as at 13th December 2019

### FUND DESCRIPTION

Silverdale Bond Fund is a diversified portfolio of primarily investment grade short duration US dollar bonds, actively managed for enhanced returns.

### FUND ADVANTAGES

- Quality Assets: Investment Grade (min 75%)
- Short duration (2-3 years)
- No forex risk (US dollars only)
- Enhanced returns, non-recourse leverage
- Quarterly dividend distribution

### FUND INFORMATION

Fund	Silverdale Fund SP-1
Fund Type	Segregated Portfolio Co
Domicile	Cayman Islands
Fund Currency	US Dollar
Inception Date <sup>†</sup>	9 Sep 2010
Weekly NAV Launch Date	4 Oct 2013
Cayman Launch Date	8 May 2015
NAV Computation	Weekly (Friday)**
Subscription/Redemption	Weekly (Monday)**
Management Fee	0.50% p.a.^
Next Quarterly Dividend	US\$ 2.10 per share <sup>#</sup>
Next Dividend Date	27 Dec 2019
Trailing 12 mth Dividend	US\$ 8.30 per share
Sales Registration	Singapore, Taiwan, United Kingdom, UAE and Australia

### AT A GLANCE

Gross Investments	US\$ 481 million
Net Assets (AUM)	US\$ 193 million
Net Loan	US\$ 283 million
Gross Book <sup>6</sup>	US\$ 764 million
Investment Grade Bonds	76.94 %
Number of Securities	125
Max Single Security Exposure	3.24 %
Number of Countries	23
Max Single Country Exposure	30 %

### SHARE CLASS AVAILABLE

SHARE CLASS	ISIN
Silverdale Fund SP1A	KYG8135U1076
Silverdale Fund SP1B	KYG8135U1159
Silverdale Fund SP1C	KYG8135U2066
Silverdale Fund SP1D	KYG8135U2306
Silverdale Fund SP1E	KYG8135U2488
Silverdale Fund SP1F	KYG8135U2553
Silverdale Fund SP1K	KYG8135U2975
Silverdale Fund SP1H	KYG8135U2892

Silverdale Bond Fund generates enhanced investor returns with low volatility, while actively managing the portfolio duration. During the week ended 13th December 2019 the Fund NAV appreciated by 0.29% to US\$ 127.91 (previous week: US\$ 127.54), with actual portfolio yield (post-leverage) of 7.73% per annum (previous week: 8.18% p.a.), and average duration of 1.63 years (previous week: 1.65 years).

### PORTFOLIO DASHBOARD

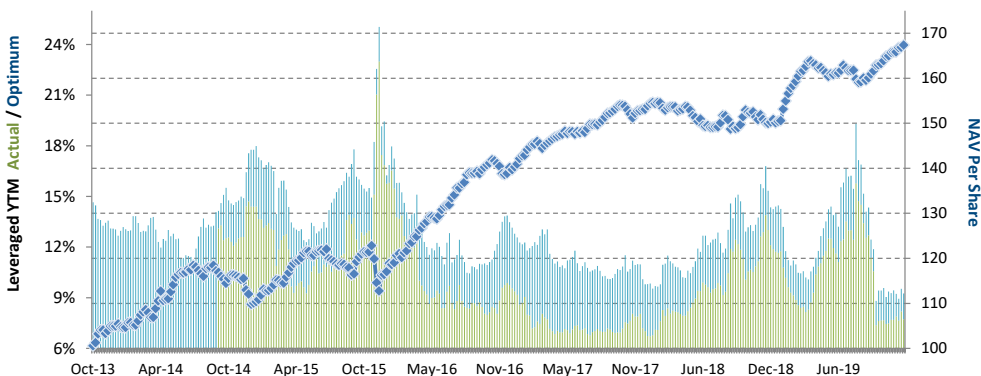
Accumulating NAV US\$ **167.3548** Distributing NAV US\$ **127.9051**

### PERFORMANCE (net of fees)

Year to Date	11.25 %
Trailing 1 month	0.91 %
Trailing 3 months	3.99 %
Trailing 12 months	10.96 %
Trailing 3 years	6.21 % p.a.
Trailing 5 years	8.79 % p.a.
Since 4 Oct 2013	8.57 % p.a.

### FUND STATISTICS

Portfolio Yield to Maturity	4.50 %
Leveraged YTM - Actual	7.73 %
Leveraged YTM - Optimum	9.25 %
Average Coupon	5.47 %
Average Duration	1.63 years
Total Dividend Paid	US\$ 33.87
Sharpe Ratio (3 year) <sup>††</sup>	1.40

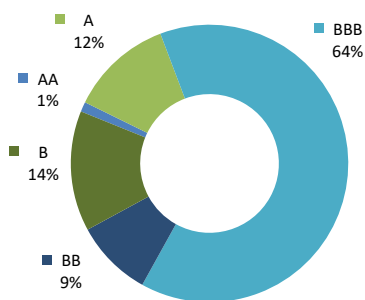


### NAV and post-leverage YTM (net of fees)

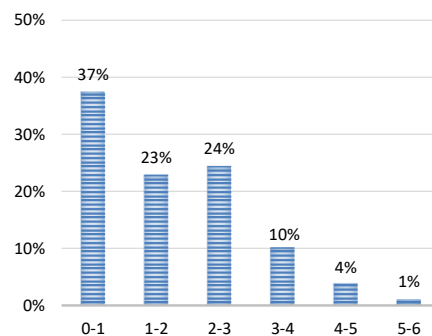
Period	2013*	2014	2015	2016	2017	2018	Oct'18-Dec'18	Jan'19-Mar'19	Apr'19-Jun'19	Jul'19-Sep'19
Dividend	-	-	4.47	7.30	7.80	8.00	2.00	2.10	2.10	2.10
Return to Investor	4.06%	5.46%	6.08%	20.42%	9.16%	-2.24%	-1.61%	8.92%	-0.58%	-0.01%

2013\* refers to Oct to Dec 2013

### Investor Return and Dividend Distributions



RATING PROFILE<sup>1</sup>



PORTFOLIO DURATION<sup>2</sup>

### FUND MANAGER

Silverdale Capital Pte Ltd

Regulated by Monetary Authority of Singapore (UEN# 200820921K)

8 Temasek Boulevard, #35-02 Suntec Tower-3, Singapore: 038988, Tel: +65 6835 7130 Email: ir@silverdalegroup.com



PLEASE REFER OVERLEAF FOR IMPORTANT DISCLOSURES & RISK FACTORS

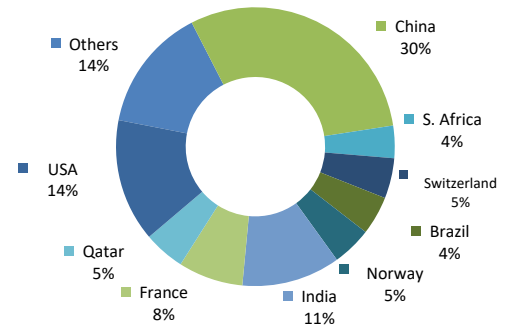
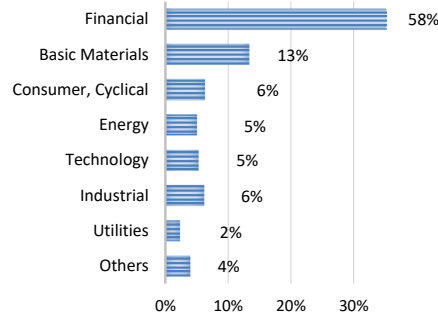


## Silverdale Bond Fund

324th Weekly Factsheet as at 13th December 2019

### TOP 10 HOLDINGS<sup>3</sup>

	%	age
Country Garden 2020	3.24	%
Indusind Bank 2022	2.76	%
Dnb Bank Asa 2020	2.72	%
Citadel Lp 2022	2.66	%
Vedanta Resources 2021	2.59	%
Huarong Finance 2022	2.58	%
Powerlong 2020	2.42	%
Braskem Finance 2022	2.33	%
Turkiye Halk Bankasi 2020	2.26	%
Chang Development 2020	2.26	%



### FUND MANAGEMENT DETAILS THE FUND

#### Silverdale Bond Fund

is the segregated portfolio-1 (SP-1) of Silverdale Fund SPC, a Cayman Islands domiciled mutual fund, registered with Cayman Islands Monetary Authority

#### FUND ADMINISTRATOR

##### Vistra (Mauritius) Limited

Regulated by Financial Services Commission  
3rd Floor, 355 NEX, Rue du Savoir, Cybercity Ebene, Mauritius  
Tel.: +230 260 7275  
Fax: +230 260 7001  
Email: spc@silverdalegroup.com

### PORTFOLIO UPDATE

During the week ended 13th December 2019, we purchased Country Garden (BB/Ba2/BBB-) and UBS (BB/Ba1/BBB-) bonds.

Country Garden (Mkt Cap: US\$ 33.3bn) is one of the largest Chinese developer with gross contracted sales of US\$ 74bn in 2018. As of June 2019, it operated around 2,381 projects and had attributable land bank of 273mn sqm. It also owns 48 hotels. As of June 2019, it reported total assets of US\$ 250bn, adjusted net debt to EBITDA at 1.2x and interest coverage ratio at 4.2x. It is circa 44% owned by promoter's family and 9% by Ping An Life Insurance.

UBS (Mkt Cap: US\$ 47.4bn) is the largest Wealth Manager in the world with invested assets of US\$ 3.2tn. As of September 2019, it reported total assets at US\$ 973bn, Common Equity Tier-1 Capital ratio at 13.1%.

### RISK PROFILE

NAV Per Share can go up as well as down and any capital invested in the fund may be at risk. The Fund uses leverage and derivatives for hedging or as part of its investment strategy which involve additional costs and risks. For further details, please refer to the Composite PPM.

### DIVIDEND DETAILS

The Fund is likely to declare Nineteenth Quarterly Dividend of circa US\$ 2.10 per share on the shares held on Friday, 27th December 2019 (Dividend Record Date). All subscriptions received on or before 20th December 2019 shall be eligible for dividend distribution.

### HOW TO INVEST

Please ask your private bank/distributor to subscribe to Silverdale Bond Fund as per terms of the Composite PPM (quoting the relevant ISIN). Should you seek any support, please: Call Fund Administrator at +230 2607 275, or Fund Management Company at +65 6835 7130 or Email: spc@silverdalegroup.com

### FUND MANAGER

#### Silverdale Capital Pte Ltd

Regulated by Monetary Authority of Singapore (UEN# 200820921K)

8 Temasek Boulevard, #35-02 Suntec Tower-3, Singapore: 038988, Tel: +65 6835 7130 Email: ir@silverdalegroup.com



### RISK FACTORS

**Interest Rate Risk:** The increase (fall) in value of fixed income securities with fall (increase) in interest rate. **Credit Risk:** The ability of the issuer to redeem the bonds (or other securities) on maturity. **Liquidity Risk:** The ability to sell a bond before its redemption. **Counterparty Risk:** The risk due to failure of the counterparty dealt with. **Country Risk:** The investment strategy is subject to the risks relating to the geographical, political, economic and social issues of the country of the Issuer, and to a lesser extent that of United States. **Leverage/Derivatives Risk:** Disproportionately large change in value of securities due to relatively small change in determinant.

### DISCLAIMER

The above commentary does not provide a complete analysis of every material fact regarding the market, industry, security, portfolio or the fund. It is not a recommendation to buy or sell any security nor an investment advice. The portfolio holdings, opinions and information may change without notice. The contents of this document, including any narrative does not constitute an offer to sell or a solicitation of any offer to buy the units or shares in Silverdale Bond Fund (or Silverdale Fund SP-1), or any other segregated portfolio or Class of Silverdale Fund SPC or any of the funds managed or advised by Silverdale Capital Pte Ltd., and is strictly for information only. Any subscription for units or shares must be made solely on the basis of the fund's private placement memorandum, class supplements, application form and appendices (together "the Composite PPM"). Past performance is not an indicator of future performance. Opinions and estimates contained in this document are subject to change without notice, and the actual results would differ from the said opinions and estimates. The Fund uses/invests in financial derivative instruments. Please refer to the Composite PPM for Risk Factors. This document is written for the benefit of and being communicated only to Accredited Investors or Institutional Investors as defined under the Securities and Futures Act (Cap. 289) of Singapore or any similarly defined investor in any other securities legislation. The recipient should obtain opinion from independent professional adviser before making any decision based on this document. The NAV performance is computed taking: 1 month = 4 weeks, 3 months = 13 weeks, 6 months = 26 weeks, 9 months = 39 weeks, 12 months = 52 weeks, 3 years = 156 weeks and 5 years = 260 weeks. NAV prior to 8 May 2015 is based on NAV of underlying fund (Class E of Sri Silverdale Opportunities Fund). Payment of Dividend results in equivalent amount of drop in the NAV of the Fund. (\*\*) Assuming to be Business Day. (#) Indicative. (†) Initially launched as multi-assets fund with quarterly NAV. (1), (2), (3), (4) & (5) Based on gross investments into securities. (1) Credit Rating is based on best of the three ratings (S&P/Moodys/Fitch); Rating exposure of less than 4% has been clubbed as "Others". (4) Sector exposure of less than 5% has been clubbed as 'Others'. (5) Country exposure of less than 3.5% has been clubbed as 'Others'. (6) Gross Book is aggregation of Gross Investments and Loans (net of cash). (\*\*) Based on Gross Assets. Ranking source: Bloomberg's special report on Asia's Hedge Fund dated June 26, 2015; category: Multi Strategy. (††) Sharpe Ratio: Source Bloomberg.