



Silverdale Bond Fund

Weekly Factsheet as at 14th December 2018

FUND DESCRIPTION

Silverdale Bond Fund is a diversified portfolio of primarily investment grade short duration US dollar bonds, actively managed for enhanced returns, using ring-fenced leverage.

FUND ADVANTAGES

- Quality Assets: Investment Grade (min 75%)
- Short duration (2-3 years)
- No forex risk (US dollars only)
- Enhanced returns, non-recourse leverage
- Quarterly dividend distribution

FUND INFORMATION

Fund	Silverdale Fund SP-1
Fund Type	Segregated Portfolio Co
Domicile	Cayman Islands
Fund Currency	US Dollar
Inception Date [†]	9 Sep 2010
Weekly NAV Launch Date	4 Oct 2013
Cayman Launch Date	8 May 2015
NAV Computation	Weekly (Friday)
Subscription/Redemption	Weekly (Monday)
Management Fee	0.50% p.a. ^{^^}
Next Quarterly Dividend	US\$ 2.00 per share [#]
Next Dividend Date	28 Dec 2018
Trailing 12 mth Dividend	US\$ 8.00 per share
Sales Registration	Singapore, Taiwan, UAE, and United Kingdom

AT A GLANCE

Gross Assets	US\$ 440 million
Net Assets	US\$ 153 million
Investment Grade Bonds	79.24 %
Number of Securities	121
Max single security exposure	3.33 %
Number of Countries	20
Max single country exposure	22.47 %

SHARE CLASS AVAILABLE

SHARE CLASS	ISIN
Silverdale Fund SP1A	KYG8135U1076
Silverdale Fund SP1B	KYG8135U1159
Silverdale Fund SP1C	KYG8135U2066
Silverdale Fund SP1D	KYG8135U2306
Silverdale Fund SP1E	KYG8135U2488
Silverdale Fund SP1F	KYG8135U2553

Silverdale Bond Fund generates enhanced investor returns by clever use of asset-level leverage, while actively managing the portfolio duration. During the week ended 14th December 2018, the Fund NAV appreciated by 0.36% to 123.10 (previous week: US\$ 122.66), with actual portfolio yield (post-leverage) of 11.88% per annum (previous week: 12.11% p.a.), and average duration of 1.69 years (previous week: 1.70 years).

PORTFOLIO DASHBOARD

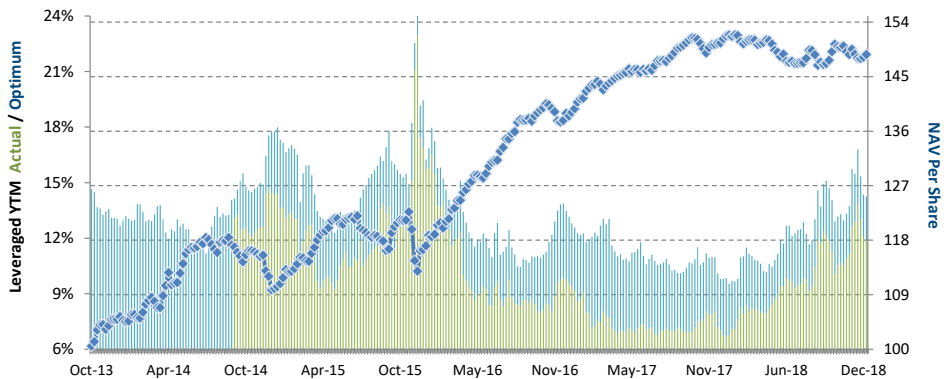
Growth NAV US\$ **148.6687** Ex-Dividend NAV US\$ **123.0956**

PERFORMANCE (net of fees)

Year to Date	-1.9643 %
Trailing 1 month	-0.0468 %
Trailing 3 months	0.7655 %
Trailing 12 months	-1.4242 %
Trailing 3 years	8.72% p.a.
Trailing 5 years	7.25% p.a.
Since 4 Oct 2013	7.81% p.a.

FUND STATISTICS

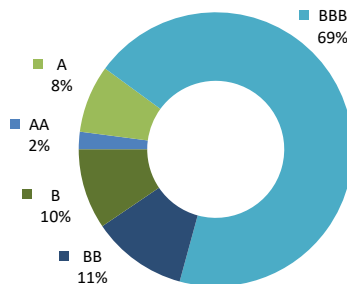
Portfolio Yield to Maturity	6.08 %
Leveraged YTM - Actual	11.88 %
Leveraged YTM - Optimum	14.25 %
Average Coupon	5.11 %
Average Duration	1.69 years
Total Dividend Paid	US\$ 25.57
Sharpe Ratio (3 year) ^{**}	2.06



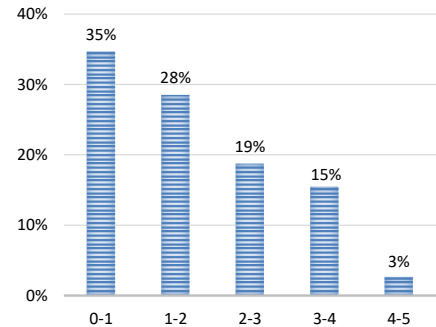
NAV and post-leverage YTM (net of fees)

Period	Oct'13-Dec'13	2014	2015	2016	2017	Oct'17-Dec'17	Jan'18-Mar'18	Apr'18-Jun'18	Jul'18-Sep'18
Dividend	-	-	4.47	7.30	7.80	2.00	2.00	2.00	2.00
Ex-Dividend Price	104.6428	110.3573	112.6058	127.9435	131.6822	131.6822	128.9304	123.6521	124.7965
Return to Investor	4.06%	5.46%	6.09%	20.10%	9.02%	0.47%	-0.57%	-2.54%	2.54%

Investor Return and Dividend Distributions



RATING PROFILE¹



PORTFOLIO DURATION²

FUND MANAGER

Silverdale Capital Pte Ltd

Regulated by Monetary Authority of Singapore (UEN# 200820921K)

8 Temasek Boulevard, #35-02 Suntec Tower-3, Singapore: 038988, Tel: +65 6835 7130 Email: ir@silverdalegroup.com



PLEASE REFER OVERLEAF FOR IMPORTANT DISCLOSURES & RISK FACTORS



Silverdale Bond Fund

Weekly Factsheet as at 14th December 2018

TOP 10 HOLDINGS³

	%	age
Pttep Treasury 2019	3.33	%
Credit Agricole 2019	3.15	%
Seagate Hdd 2022	2.65	%
Braskem Finance 2022	2.45	%
Tewoo Group 2019	2.14	%
Gerdau Trade Inc 2023	2.14	%
Tc Ziraat Bankasi 2019	2.13	%
Vedanta Resources 2021	2.06	%
Qnb Finance Ltd 2021	2.06	%
Dnb Bank Asa 2020	2.02	%

FUND MANAGEMENT DETAILS
THE FUND

Silverdale Bond Fund

is the segregated portfolio-1 (SP-1) of Silverdale Fund SPC, a Cayman Islands domiciled mutual fund, registered with Cayman Islands Monetary Authority

FUND ADMINISTRATOR

Vistra (Mauritius) Limited

Regulated by Financial Services Commission

3rd Floor, 355 NEX, Rue du Savoir, Cybercity

Ebene, Mauritius

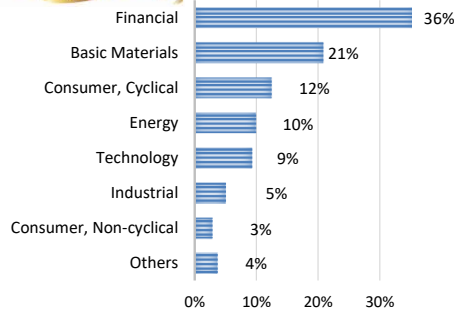
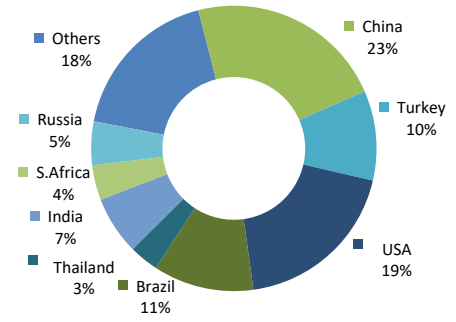
Tel.: +230 260 7275

Fax: +230 464 3290

Email: spc@silverdalegroup.com

RISK PROFILE

NAV Per Share can go up as well as down and any capital invested in the fund may be at risk. The Fund uses leverage and derivatives for hedging or as part of its investment strategy which involve additional costs and risks. For further details, please refer to the Composite PPM.

SECTORAL EXPOSURE⁴GEOGRAPHICAL EXPOSURE⁵

PORTFOLIO UPDATE

During the week ended 14th December 2018, we purchased China Vanke (BBB/Baa2/BBB+), PT Indonesia Asahan Aluminium (-/Baa2/BBB-), Sino Ocean (-/Baa3/BBB-), and Vedanta (B+/B2/-) bonds. Further we received proceeds from maturity/early call of eHi (BB-/-/B+), HK Baorong (-/Baa3/BBB+), and Macys (BBB-/Baa3/BBB) bonds.

China Vanke (Mkt Cap: US\$ 42.1bn) is one of the largest property developers in China with contracted sales of US\$ 79bn during first 11 months of 2018. As of September 2017, it had 800 property projects across China, with gross floor area of 88.6mn sqm of projects under development and 63.2mn sqm of projects held for future development. As of September 2018, it reported total assets of US\$ 207.6bn, net debt of US\$ 16.4bn, and net gearing of 52%.

PT Indonesia Asahan Aluminium (Inalum) is 100% owned by the Government of Indonesia. It is the second-largest aluminum producer in Southeast Asia. It holds 65% stakes in PT Aneka Tambang (gold, ferronickel), PT Bukit Asam (coal) and PT Timah (tin) and 9.4% stake in PT Freeport (copper). It recently raised funds to finance acquisition of stake to 51.2% in PT Freeport. As of June 2018, it reported TTM EBITDA of US\$ 1bn, gross debt of US\$ 1.1bn (net cash of US\$ 0.6bn) resulting in gross leverage of 1.1x and interest coverage ratio of 9.3x.

Sino Ocean (Mkt Cap: US\$ 42.1bn) is a Chinese property developer with contracted sales of US\$ 13.2bn during first 11 months of 2018. As of June 2018, it had over 180 projects covering 37 cities across China with an attributable land bank of approx. 21mn sqm. Besides property development, it is also into property investment with total leaseable area around 1.2 mn sqm. As of June 2018, it reported total assets of US\$ 31.7bn, net debt of US\$ 7.6bn and adjusted net gearing of 84%. Sino Ocean is owned circa 29.6% each by China Life Insurance and Anbang Insurance Group.

Vedanta Resources plc is a diversified metals & mining company with interests in zinc, lead, silver, copper, iron ore, aluminium, power and oil & gas. Zinc is the largest segment contributing almost half of its EBITDA; geographically 63% of revenue comes from India. As of Sep 2018, it reported net debt of US\$ 10.2bn, EBITDA of US\$ 4.1bn with Net Debt/EBITDA of 2.5x and interest coverage ratio of 4.5x.

DIVIDEND DETAILS

The Fund is likely to declare a dividend of circa US\$ 2.00 per share on the shares held on Friday, December 28, 2018 (Dividend Record Date). All subscriptions received before 21st December shall be eligible for dividend distribution.

HOW TO INVEST

Please ask your private bank/distributor to subscribe to Silverdale Bond Fund as per terms of the Composite PPM (quoting the relevant ISIN).

Should you seek any support, please: Call Fund Administrator at +230 2607 275, or Fund Management Company at +65 6835 7130

or Email: spc@silverdalegroup.com

FUND MANAGER

Silverdale Capital Pte Ltd

Regulated by Monetary Authority of Singapore (UEN# 200820921K)

8 Temasek Boulevard, #35-02 Suntec Tower-3, Singapore: 038988, Tel: +65 6835 7130 Email: ir@silverdalegroup.com



RISK FACTORS

Interest Rate Risk: The increase (fall) in value of fixed income securities with fall (increase) in interest rate. **Credit Risk:** The ability of the issuer to redeem the bonds (or other securities) on maturity. **Liquidity Risk:** The ability to sell a bond before its redemption. **Counterparty Risk:** The risk due to failure of the counterparty dealt with. **Country Risk:** The investment strategy is subject to the risks relating to the geographical, political, economic and social issues of the country of the Issuer, and to a lesser extent that of United States. **Leverage/Derivatives Risk:** Disproportionately large change in value of securities due to relatively small change in determinant.

DISCLAIMER

The above commentary does not provide a complete analysis of every material fact regarding the market, industry, security, portfolio or the fund. It is not a recommendation to buy or sell any security nor an investment advice. The portfolio holdings, opinions and information may change without notice. The contents of this document, including any narrative does not constitute an offer to sell or a solicitation of any offer to buy the units or shares in Silverdale Bond Fund (or Silverdale Fund SP-1), or any other segregated portfolio or Class of Silverdale Fund SPC or any of the funds managed or advised by Silverdale Capital Pte Ltd., and is strictly for information only. Any subscription for units or shares must be made solely on the basis of the fund's private placement memorandum, class supplements, application form and appendices (together "the Composite PPM"). Past performance is not an indicator of future performance. Opinions and estimates contained in this document are subject to change without notice, and the actual results would differ from the said opinions and estimates. The Fund uses/ invests in financial derivative instruments. Please refer to the Composite PPM for Risk Factors. This document is written for the benefit of and being communicated only to Accredited Investors or Institutional Investors as defined under the Securities and Futures Act (Cap. 289) of Singapore or any similarly defined investor in any other securities legislation. The recipient should obtain opinion from independent professional adviser before making any decision based on this document. The NAV performance is computed taking: 1 month = 4 weeks, 3 months = 13 weeks, 6 months = 26 weeks, 9 months = 39 weeks, 12 months = 52 weeks, 3 years = 156 weeks and 5 years = 260 weeks. NAV prior to 8 May 2015 is based on NAV of underlying fund (Class E of Sri Silverdale Opportunities Fund). Payment of Dividend results in equivalent amount of drop in the NAV of the Fund. (*) Assuming to be Business Day. (#) Indicative. (†) Initially launched as multi-assets fund with quarterly NAV. (1), (2), (3), (4) & (5) Based on gross investments into securities. (1) Credit Rating is based on best of the three ratings (S&P/Moody's/Fitch). (4) Sector exposure of less than 5% has been clubbed as 'Others'. (5) Country exposure of less than 3.5% has been clubbed as 'Others'. (^^) Based on Gross Assets. Ranking source: Bloomberg's special report on Asia's Hedge Fund dated June 26, 2015; category: Multi Strategy. (††) Sharpe Ratio: Source Bloomberg.