

FUND DESCRIPTION

Silverdale Bond Fund is a diversified portfolio of primarily investment grade short duration US dollar bonds, actively managed for enhanced returns, using ring-fenced leverage.

FUND ADVANTAGES

- Quality Assets: Investment Grade (min 75%)
- Short duration (2-3 years)
- No forex risk (US dollars only)
- Enhanced returns, non-recourse leverage
- Quarterly dividend distribution

FUND INFORMATION

Fund	Silverdale Fund SP-1
Fund Type	Segregated Portfolio Co
Domicile	Cayman Islands
Fund Currency	US Dollar
Inception Date [†]	9 Sep 2010
Weekly NAV Launch Date	1 Oct 2013
Cayman Launch Date	8 May 2015
NAV Computation	Weekly (Friday)
Subscription/Redemption Management Fee	0.50% p.a. ^{^^}
Next Quarterly Dividend	US\$ 2.00 per share [#]
Next Dividend Date	28 Dec 2018
Trailing 12 mth Dividend	US\$ 8.00 per share
Sales Registration	Singapore, Taiwan, United Kingdom, Hong Kong & UAE.

Silverdale Bond Fund generates enhanced investor returns by clever use of asset-level leverage, while actively managing the portfolio duration. During the week ended 28th September 2018, the Fund NAV appreciated by 0.97% with Cum Dividend NAV of 126.80. The Fund has declared quarterly dividend of US\$ 2.00 per share, the Ex Dividend NAV of the Fund is US\$ 124.80. The actual portfolio yield (post-leverage) was 10.07% per annum (previous week: 11.30% p.a.) with average duration of 1.81 years (previous week: 1.78 years).

PORTFOLIO DASHBOARD

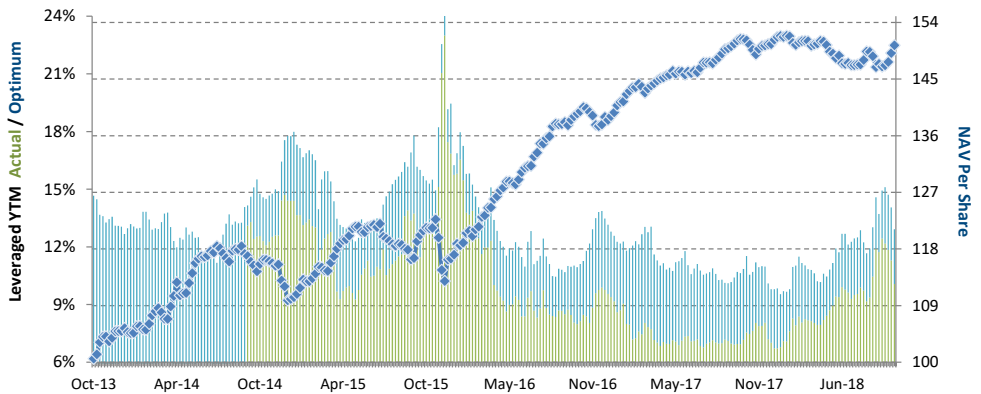
Growth NAV US\$ 150.3696 Ex-Dividend NAV US\$ 124.7965

PERFORMANCE (net of fees)

Year to Date	-0.6726 %
Trailing 1 month	2.7207 %
Trailing 3 months	2.5429 %
Trailing 6 months	-0.1039 %
Trailing 12 months	-0.1938 %
Trailing 3 years	9.06% p.a.

FUND STATISTICS

Portfolio Yield to Maturity	5.54 %
Leveraged YTM - Actual	10.07 %
Leveraged YTM - Optimum	12.92 %
Average Coupon	5.09 %
Average Duration	1.81 years
Total Dividend Paid	US\$ 25.57
Sharpe Ratio (3 year) ^{††}	1.51



NAV and post-leverage YTM (net of fees)

Period	Oct'13-Dec'13	2014	2015	2016	2017	Oct'17-Dec'17	Jan'18-Mar'18	Apr'18-Jun'18	Jul'18-Sep'18
Dividend	-	-	4.47	7.30	7.80	2.00	2.00	2.00	2.00
Ex-Dividend Price	104.6428	110.3573	112.6058	127.9435	131.6822	131.6822	128.9304	123.6521	124.7965
Return to Investor	4.06%	5.46%	6.09%	20.10%	9.02%	0.47%	-0.57%	-2.54%	2.54%

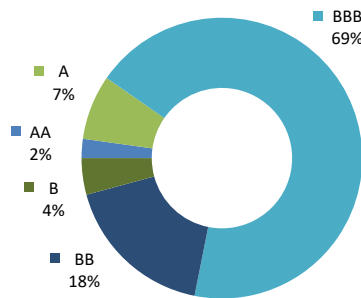
AT A GLANCE

Gross Assets	US\$ 414 million
Net Assets	US\$ 149 million
Number of Securities	118
Max single security exposure	3.52 %
Number of Countries	20
Max single country exposure	23.94 %
Investment Grade	78.14 %

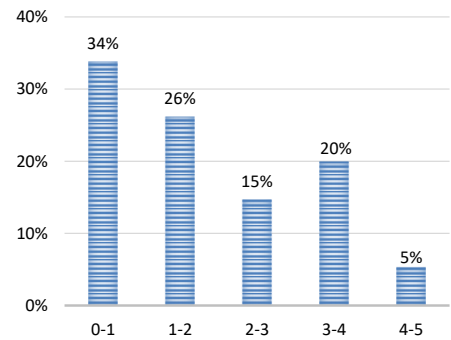
SHARE CLASS AVAILABLE

SHARE CLASS	ISIN
Silverdale Fund SP1A	KYG8135U1076
Silverdale Fund SP1B	KYG8135U1159
Silverdale Fund SP1C	KYG8135U2066
Silverdale Fund SP1D	KYG8135U2306
Silverdale Fund SP1E	KYG8135U2488
Silverdale Fund SP1F	KYG8135U2553

Investor Return and Dividend Distributions



RATING PROFILE¹



PORTFOLIO DURATION²

FUND MANAGER

Silverdale Capital Pte Ltd

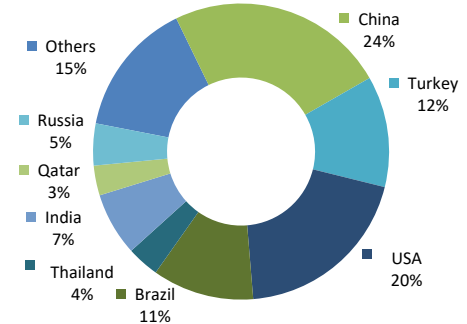
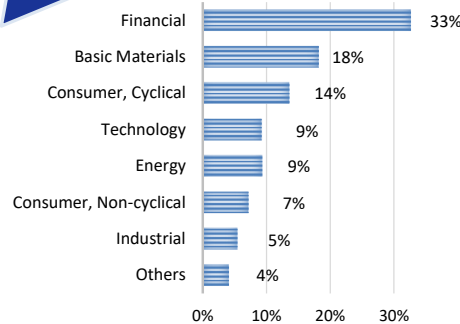
Regulated by Monetary Authority of Singapore (UEN# 200820921K)

8 Temasek Boulevard, #35-02 Suntec Tower-3, Singapore: 038988, Tel: +65 6884 9194 Email: fm@silverdalegroup.com





TOP 10 HOLDINGS ³	% age
Pttep Treasury 2019	3.52 %
Seagate Hdd 2022	2.75 %
Credit Agricole 2019	2.66 %
Tewoo Group 2019	2.33 %
Vedanta Resources 2021	2.31 %
Gerdau Trade Inc 2023	2.26 %
Qnb Finance Ltd 2021	2.21 %
Braskem Finance 2021	2.05 %
Huarong Finance 2022	2.00 %
Turkiye Garanti 2019	1.98 %



SECTORAL EXPOSURE⁴

GEOGRAPHICAL EXPOSURE⁵

FUND MANAGEMENT DETAILS THE FUND

Silverdale Bond Fund is the segregated portfolio-1 (SP-1) of Silverdale Fund SPC, a Cayman Islands domiciled mutual fund, registered with Cayman Islands Monetary Authority

FUND ADMINISTRATOR

Vistra (Mauritius) Limited
 Regulated by Financial Services Commission
 3rd Floor, 355 NEX, Rue du Savoir, Cybercity Ebene, Mauritius
 Tel.: +230 260 7275
 Fax: +230 464 3290
 Email: spc@silverdalegroup.com

DIVIDEND DETAILS

The Fund has declared Fourteenth Quarterly Dividend of US\$ 2.00 per share for the September 2018 quarter. All investors holding shares as at 28th September 2018 have been paid dividend.

RISK PROFILE

NAV Per Share can go up as well as down and any capital invested in the fund may be at risk. The Fund uses leverage and derivatives for hedging or as part of its investment strategy which involve additional costs and risks. For further details, please refer to the Composite PPM.

PORTFOLIO UPDATE

During the week ended 28 Sep 2018, we sold Macy's (BBB-/Baa3/BBB) bonds while we purchased Braskem (BBB-/Ba1/BBB-), Gerdau (BBB-/Ba2/BBB-), Prospect (BBB-/-/-), Turkiye Is Bankasi (-/B2/BB-), and Yes Bank (-/Baa3/-) bonds. Braskem S.A. (Mkt Cap: US\$ 11.4bn) is world's 7th largest polyethylene producer and 3rd largest polypropylene producer. As of June 2018, it reported net debt of US\$ 5.4bn, TTM EBITDA of US\$ 2.8bn with Net Debt/EBITDA of 1.9x and interest coverage ratio of 5.7x. It reported US\$ 1.75bn of cash and US\$ 500mn of credit lines which is adequate to cover next 3 years debt maturities.

Gerdau SA (Mkt Cap: US\$ 6.8bn) is the second largest producer of long-steel in the world with aggregate capacity of 26 MMTA across 14 countries. It is a low cost producer with vertical integration to iron ore extraction and scrap recycling. As of June 2018, it reported EBITDA of US\$ 1.5bn, total debt of US\$ 4.7bn against cash & equivalent of US\$ 0.8bn which resulted in Net Debt/EBITDA at 2.7x and EBITDA/Interest at 4.7x.

Prospect Capital (Mkt Cap: US\$ 2.7bn) is a investment management firm that provides loans to middle-market companies. As of June 2018, it reported total assets of US\$ 5.8bn, net debt of US\$ 2.2bn and unused line of credit of US\$ 850mn. It has a portfolio of 135 companies with fair value of investment of US\$ 5.7bn.

Turkiye Is Bankasi (Mkt Cap: US\$ 3.3bn) is the largest private bank in Turkey with 1,364 branches. As of June 2018, it had total assets worth US\$ 105.5bn. It reported Net Interest Margin at 4.7% and Non-Performing Loans (NPL) at 2.7% with NPL coverage of 143.6%. It reported capital adequacy ratio at 15.9% with Tier-I ratio at 13.1%.

Yes Bank (MktCap: US\$ 6.1bn) is the 4th largest private sector bank in India with total assets of US\$ 48.5bn. They provide retail and corporate banking services through its 1,105 branches. As of June 2018, it reported Net Interest Margin at 3.3% and Non-Performing Loans (NPL) at 1.31% with NPL coverage of 55.3%. It reported capital adequacy ratio at 17.3% with Tier-I ratio at 12.8%

During the month of September 2018, the Fund NAV appreciated by 2.72% contributed circa two-third by price appreciation while balance by coupon accruals. The increase in NAV was primarily owing to increase in bond prices of Turkish, Brazilian and US credits. Sectorially, Financial, Basic Material, and Consumer Non-Discretionary sectors were the key contributors.

During the month, we sold Ares Capital (BBB-/-/BBB), Coca-Cola Icecek (-/Ba2/BBB-), Gerdau (BBB-/-/BBB-), Macy's (BBB-/Baa3/BBB), Seagate (Baa3/BB+/BBB-), QNB Finansbank (-/Ba3/BB), and QNB Finance (A/Aa3/A+) bonds; while we purchased Braskem (BBB-/Ba1/BBB-), Country Garden (BB/Ba2/BBB-), Gerdau (BBB-/Ba2/BBB-), Lukoil (BBB/Baa3/BBB+), Turkiye Is Bankasi (-/B2/BB-), Turk Telekom (BB-/-/BB+), and Ziraat Bankasi (-/B1/BB-) bonds.

We continue to maintain a conservative position with circa 78.1% of our investments in Investment Grade bonds with a short duration of just 1.81 years. Our actual leveraged YTM is 10.07%.

HOW TO INVEST

Please ask your private bank/distributor to subscribe to Silverdale Bond Fund as per terms of the Composite PPM (quoting the relevant ISIN). Should you seek any support, please: Call Fund Administrator at +230 2607 275, or Fund Management Company at +65 6835 7130 or Email: spc@silverdalegroup.com

FUND MANAGER

Silverdale Capital Pte Ltd

Regulated by Monetary Authority of Singapore (UEN# 200820921K)

8 Temasek Boulevard, #35-02 Suntec Tower-3, Singapore: 038988, Tel: +65 6884 9194 Email: fm@silverdalegroup.com



RISK FACTORS

Interest Rate Risk: The increase (fall) in value of fixed income securities with fall (increase) in interest rate. **Credit Risk:** The ability of the issuer to redeem the bonds (or other fixed income securities) on maturity. **Liquidity Risk:** The ability to sell a bond before its redemption. **Counterparty Risk:** The risk due to failure of the counterparty dealt with. **Country Risk:** The investment strategy is subject to the risks relating to the geographical, political, economic and social issues of the country of the Issuer, and to a lesser extent that of United States.

DISCLAIMER

The above commentary does not provide a complete analysis of every material fact regarding the market, industry, security, portfolio or the fund. It is not a recommendation to buy or sell any security nor an investment advice. The portfolio holdings, opinions and information may change without notice. The contents of this document, including any narrative does not constitute an offer to sell or a solicitation of any offer to buy the units or shares in Silverdale Bond Fund (or Silverdale Fund SP-1), or any other segregated portfolio or Class of Silverdale Fund SPC or any of the funds managed or advised by Silverdale Capital Pte Ltd., and is strictly for information only. Any subscription for units or shares must be made solely on the basis of the fund's private placement memorandum, class supplements, application form and appendices (together "the Composite PPM"). Past performance is not an indicator of future performance. Opinions and estimates contained in this document are subject to change without notice, and the actual results would differ from the said opinions and estimates. The Fund may use or invest in financial derivative instruments. Please refer to the Composite PPM for Risk Factors. This document is written for the benefit of and being communicated only to Accredited Investors or Institutional Investors as defined under the Securities and Futures Act (Cap. 289) of Singapore or any similarly defined investor in any other securities legislation. The recipient should obtain opinion from independent professional adviser before making any decision based on this document. The NAV performance is computed taking: 1 month = 4 weeks, 3 months = 13 weeks, 6 months = 26 weeks, 9 months = 39 weeks, 12 months = 52 weeks, and 3 years = 156 weeks. NAV prior to 8 May 2015 is based on NAV of underlying fund (Class E of Sri Silverdale Opportunities Fund). Payment of Dividend results in equivalent amount of drop in the NAV of the Fund. (*) Assuming to be Business Day. (#) Indicative. (†) Initially launched as multi-assets fund with quarterly NAV. (1), (2), (3), (4) & (5) Based on gross investments into securities. (1) Credit Rating is based on best of the three ratings (S&P/Moodys/Fitch). (4) Sector exposure of less than 5% has been clubbed as 'Others'. (5) Country exposure of less than 3.5% has been clubbed as 'Others'. (^^) Based on Gross Assets. Ranking source: Bloomberg's special report on Asia's Hedge Fund dated June 26, 2015; category: Multi Strategy. (††) Sharpe Ratio: Source Bloomberg.