

Silverdale

FUND S

Bloomberg
TOP-5
ASIAN FUND

Silverdale Bond Fund

Communique as at 5th August 2016

Fund Description

Silverdale Bond Fund is a diversified portfolio of primarily investment grade short duration US dollar bonds, actively managed for enhanced returns, using ring-fenced leverage.

Investor Benefits

Active management with real time response, capitalizing on opportunistic investments and employing prudent risk management systems. Embedded leverage for higher return without hassles of loan management.

Fund Information

Fund	Silverdale Bond Fund, or Silverdale Fund SP-1
Fund Type	Segregated Portfolio Company
Domicile	Cayman Islands
Inception Date [†]	9 Sep 2010
Weekly NAV Launch Date	1 Oct 2013
Cayman Launch Date	8 May 2015
NAV Computation	Weekly
Subscription	Weekly (Friday)*
Redemption	Weekly (Monday)*
Management Fee	0.50% p.a.^ (Monday)*
Next Dividend Date	30 Sep'16 (US\$ 1.75 per share) [#]
Previous Dividend Dates	24 Jun'16 (US\$ 1.75 per share) 24 Mar'16 (US\$ 1.75 per share) 24 Dec'15 (US\$ 1.75 per share) 25 Sep'15 (US\$ 1.75 per share) 26 Jun'15 (US\$ 0.97 per share)

Class 1A Details

ISIN	KYG8135U1076
CUSIP	G8135U 107
Swiss Valor No.	28213010
Bloomberg Code	SILV01A KY Equity
Morningstar SecID	F00000WLJR
Initial Sales Charge	1.00%
Exit Load	0.25%

Class 1B Details

ISIN	KYG8135U1159
CUSIP	G8135U 115
Bloomberg Code	SILV01B KY Equity
Morningstar SecID	F00000WLJW
Initial Sales Charge	0.00%
Contingent Load	3.00% - 0.25%
Exit Load	1.00%

Fund Management Details

THE FUND

Silverdale Bond Fund or Silverdale Fund SP-1 is a segregated portfolio of Silverdale Fund SPC, a Cayman Islands domiciled segregated portfolio company, registered with Cayman Islands Monetary Authority

FUND MANAGER

Silverdale Capital Pte Ltd

Regulated by Monetary Authority of Singapore
UEN# 200820921K

Fund Administrator

Vistra (Mauritius) Limited
355 NeXTeracom Tower 1, Cybercity,
Ebene, Mauritius
Tel.: +230 464 7275 Fax: +230 464 3290
Email: spc@silverdalegroup.com



2016 ALTERNATIVE INVESTMENTS AWARDS FOR
Best Emerging Markets Credit Fund



Investors' Choice Award
EM Credit Fund of 2015
Nominee

For subscription & information, please

Email: spc@silverdalegroup.com

Or, Call: +65 6835 7130

DISCLAIMER

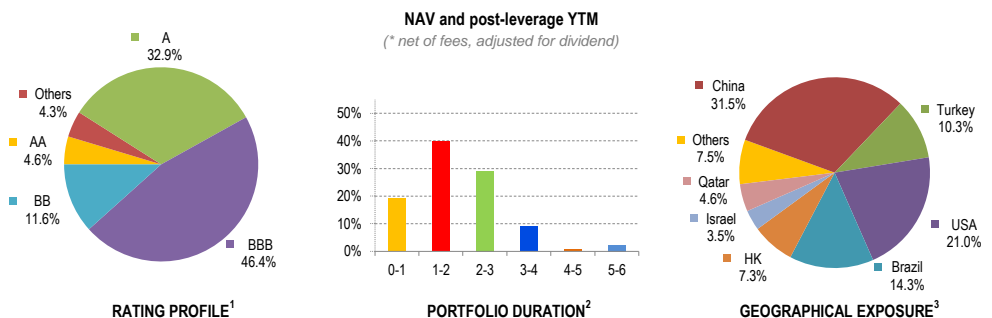
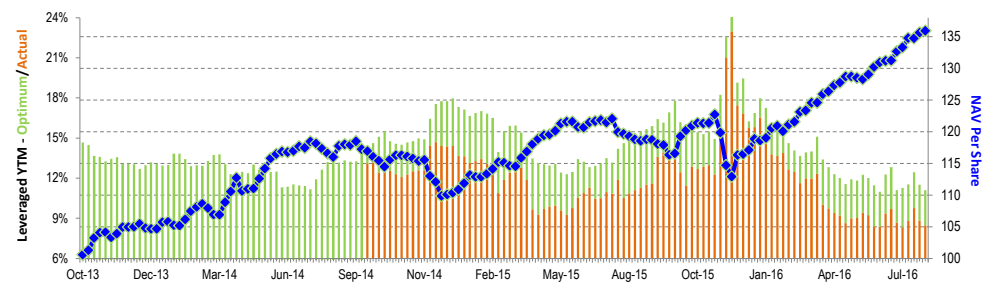
The above commentary does not provide a complete analysis of every material fact regarding the market, industry, security, portfolio or the fund. It is not a recommendation to buy or sell any security nor an investment advice. The portfolio holdings, opinions and information may change without notice. The contents of this document, including any narrative does not constitute an offer to sell or a solicitation of any offer to buy the units or shares in Silverdale Bond Fund (or Silverdale Fund SP-1), or any other segregated portfolio or Class of Silverdale Fund SPC or any of the funds managed or advised by Silverdale Capital Pte Ltd., and is strictly for information only. Any subscription for units or shares must be made solely on the basis of the fund's private placement memorandum, class supplements, application form and appendices (together "the Composite PPM"). Past performance is not necessarily a guide to the future performance. Opinions and estimates contained in this document are subject to change without notice, and the actual results would differ from the said opinions and estimates. The Fund may use or invest in financial derivative instruments. Please refer to the Composite PPM for Risk Factors. This document is written for the benefit of and being communicated only to Accredited Investors or Institutional Investors as defined under the Securities and Futures Act (Cap. 289) of Singapore or any similarly defined investor in any other securities legislation. The recipient should obtain opinion from independent professional adviser before making any decision based on this document. The NAV performance is computed taking: 1 month = 4 weeks, 3 months = 13 weeks, 6 months = 26 weeks, 9 months = 39 weeks, and 12 months = 52 weeks. NAV prior to 8 May 2015 is based on NAV of underlying fund (Class E of Sri Silverdale Opportunities Fund). (*) Assuming to be Business Day. (#) Indicative. (^) Average duration excludes favourable impact of interest rate hedges. (†) Initially launched as multi-assets fund with quarterly NAV. (1), (2), & (3) Based on gross investments into securities. (1) Credit exposure of those rated below "BB" has been clubbed as "Others". (3) Country exposure of less than 4% has been clubbed as "Others". (^^) Based on Gross Assets. Ranking source: Bloomberg's special report on Asia's Hedge Fund dated June 26, 2015; category: Multi Strategy.

Silverdale Fund SP-1

Silverdale Bond Fund (or Silverdale Fund SP-1) generates enhanced investor returns by clever use of asset-level leverage, while actively managing the portfolio duration. During the week ended 5th August 2016, the Fund NAV appreciated by 0.23% to US\$ 127.94 (previous week: US\$ 127.65), with actual portfolio yield (post-leverage) of 8.48% per annum (previous week: 8.82% p.a.), and average duration of 1.92 years (previous week: 1.90 years).

Portfolio Dashboard

Performance (Not annualised)*	Growth NAV US\$	135.9106	Ex-Dividend NAV US\$	127.9375	
Previous 1 week	0.2139 %	Portfolio Yield to Maturity	3.27 %	Mcc Holding Hk Corp Ltd	4.66 %
Trailing 1 month	1.9508 %	Leveraged YTM - Actual	8.48 %	Qnb Finance Ltd	4.65 %
Trailing 3 months	5.5794 %	Leveraged YTM - Optimum	11.11 %	Gap Inc/The	4.43 %
Trailing 6 months	12.4237 %	Average Coupon	4.30 %	Tianjin City Constructio	3.95 %
Trailing 9 months	12.0530 %	Average Duration [^]	1.92 years	Yapi Ve Kredi Bankasi As	3.88 %
Trailing 12 months	13.9562 %	Last Dividend Paid	US\$ 1.75	Israel Electric Corp Ltd	3.45 %
	(*) after all fees, before dividends	Total Dividend Paid	US\$ 7.97	Hebei Iron & Steel	3.44 %



Portfolio Update

During the week ended 5th August 2016, Silverdale Bond Fund purchased Yapi ve Kredi Bankasi 2017, and Petrobras 2019 bonds. It also received proceeds from early call of AngloGold Ashanti 2020 bonds.

Yapi ve Kredi Bankasi (Mkt Cap: US\$ 5.1bn) is the fourth largest private bank in Turkey in terms of assets and loans, with ~900 branches. As of June 2016, it had total assets worth ~US\$ 85.5bn and book value of equity of ~US\$ 8.5bn. It reported Net Interest Margin at ~3.3% and Non-Performing Loans (NPL) at ~4.3% with NPL coverage of ~115%. It reported capital adequacy ratio at ~14.6% with Tier-I ratio at ~11.2%.

Petroleo Brasileiro S.A. (Mkt Cap: US\$ 52.6bn), is an integrated energy company, with total assets of over ~US\$ 200bn. As at 31st Mar 2016, it reported EBITDA of ~US\$ 20.6bn with Net Debt/EBITDA of ~5.1x and interest coverage ratio of ~3.1x. Brazilian Petro owns ~46% of its capital and ~60% of its voting shares. The bonds are issued by its wholly owned subsidiary and guaranteed by it.

Subscription Details

Subscription can be made only as per terms & conditions of the composite Private Placement Memorandum (including Class Supplement) which may be obtained free of cost from the Fund Administrator at spc@silverdalegroup.com