



## Silverdale Bond Fund

316th Weekly Factsheet as at 18th October 2019

### FUND DESCRIPTION

Silverdale Bond Fund is a diversified portfolio of primarily investment grade short duration US dollar bonds, actively managed for enhanced returns, using ring-fenced leverage.

### FUND ADVANTAGES

- Quality Assets: Investment Grade (min 75%)
- Short duration (2-3 years)
- No forex risk (US dollars only)
- Enhanced returns, non-recourse leverage
- Quarterly dividend distribution

### FUND INFORMATION

Fund	Silverdale Fund SP-1
Fund Type	Segregated Portfolio Co
Domicile	Cayman Islands
Fund Currency	US Dollar
Inception Date <sup>†</sup>	9 Sep 2010
Weekly NAV Launch Date	4 Oct 2013
Cayman Launch Date	8 May 2015
NAV Computation	Weekly (Friday)**
Subscription/Redemption	Weekly (Monday)**
Management Fee	0.50% p.a.^
Next Quarterly Dividend	US\$ 2.10 per share <sup>#</sup>
Next Dividend Date	27 Dec 2019
Trailing 12 mth Dividend	US\$ 8.30 per share
Sales Registration	Singapore, Taiwan, United Kingdom and UAE

### AT A GLANCE

Gross Investments	US\$ 447 million
Net Assets (AUM)	US\$ 191 million
Net Loan	US\$ 254 million
Gross Book <sup>6</sup>	US\$ 701 million
Investment Grade Bonds	79.22 %
Number of Securities	115
Max Single Security Exposure	3.01 %
Number of Countries	21
Max Single Country Exposure	27.81 %

### SHARE CLASS AVAILABLE

SHARE CLASS	ISIN
Silverdale Fund SP1A	KYG8135U1076
Silverdale Fund SP1B	KYG8135U1159
Silverdale Fund SP1C	KYG8135U2066
Silverdale Fund SP1D	KYG8135U2306
Silverdale Fund SP1E	KYG8135U2488
Silverdale Fund SP1F	KYG8135U2553
Silverdale Fund SP1K	KYG8135U2975
Silverdale Fund SP1H	KYG8135U2892

Silverdale Bond Fund generates enhanced investor returns by clever use of asset-level leverage, while actively managing the portfolio duration. During the week ended 18th October 2019 the Fund NAV appreciated by 0.41% to US\$ 125.26 (previous week: US\$ 124.75), with actual portfolio yield (post-leverage) of 7.67% per annum (previous week: 7.65% p.a.), and average duration of 1.65 years (previous week: 1.64 years).

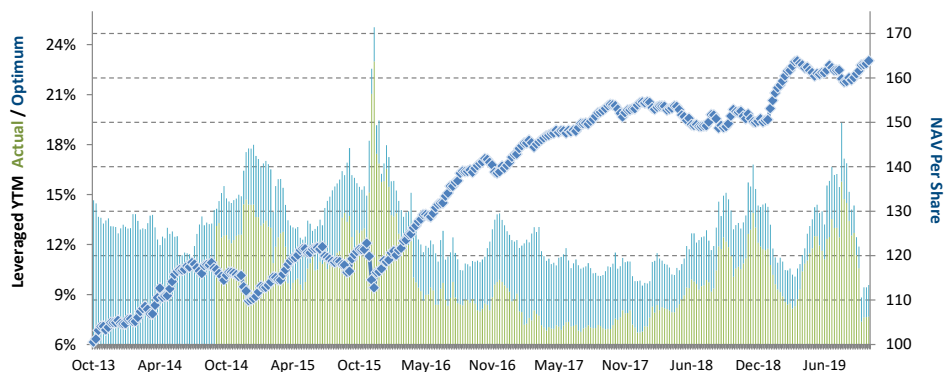
### PORTFOLIO DASHBOARD

#### PERFORMANCE (net of fees)

Year to Date	8.95 %
Trailing 1 month	1.40 %
Trailing 3 months	1.34 %
Trailing 12 months	7.46 %
Trailing 3 years	4.93 % p.a.
Trailing 5 years	7.11 % p.a.
Since 4 Oct 2013	8.42 % p.a.

#### FUND STATISTICS

Portfolio Yield to Maturity	4.75 %
Leveraged YTM - Actual	7.67 %
Leveraged YTM - Optimum	9.58 %
Average Coupon	5.40 %
Average Duration	1.65 years
Total Dividend Paid	US\$ 33.87
Sharpe Ratio (3 year) **	1.02

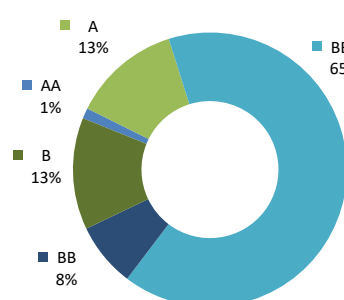
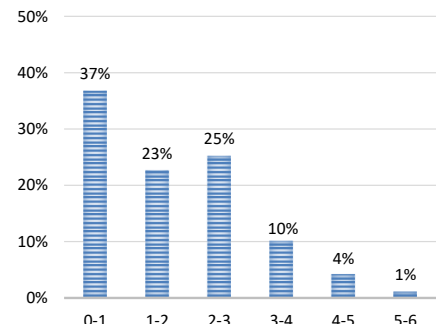


### NAV and post-leverage YTM (net of fees)

Period	2013*	2014	2015	2016	2017	2018	Oct'18-Dec'18	Jan'19-Mar'19	Apr'19-Jun'19	Jul'19-Sep'19
Dividend	-	-	4.47	7.30	7.80	8.00	2.00	2.10	2.10	2.10
Return to Investor	4.06%	5.46%	6.08%	20.42%	9.16%	-2.24%	-1.61%	8.92%	-0.58%	-0.01%

2013\* refers to Oct to Dec 2013

### Investor Return and Dividend Distributions

RATING PROFILE<sup>1</sup>PORTFOLIO DURATION<sup>2</sup>

### FUND MANAGER

#### Silverdale Capital Pte Ltd

Regulated by Monetary Authority of Singapore (UEN# 200820921K)

8 Temasek Boulevard, #35-02 Suntec Tower-3, Singapore: 038988, Tel: +65 6835 7130 Email: ir@silverdalegroup.com



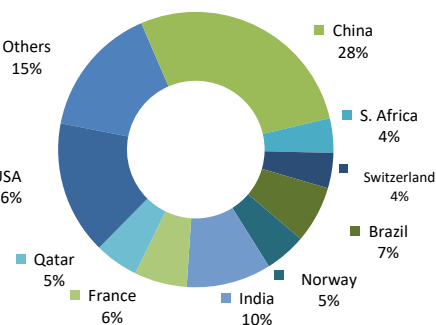
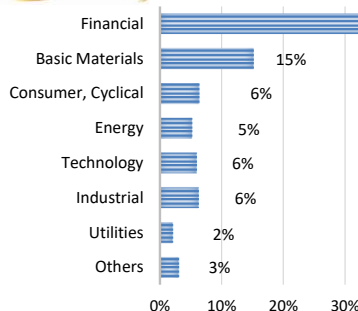
PLEASE REFER OVERLEAF FOR IMPORTANT DISCLOSURES &amp; RISK FACTORS

# Silverdale Bond Fund

316th Weekly Factsheet as at 18th October 2019

## TOP 10 HOLDINGS<sup>3</sup>

	%	age
Country Garden 2020	3.01	%
Dnb Bank Asa 2020	2.91	%
Citadel Lp 2022	2.84	%
Huarong Finance 2022	2.75	%
Indusind Bank 2022	2.73	%
Braskem Finance 2022	2.53	%
Chang Development 2020	2.42	%
Türkiye Halk Bankası 2020	2.37	%
Vedanta Resources 2021	2.16	%
Bnp Paribas 2024	2.16	%



## FUND MANAGEMENT DETAILS THE FUND

**Silverdale Bond Fund**  
is the segregated portfolio-1 (SP-1) of Silverdale Fund SPC, a Cayman Islands domiciled mutual fund, registered with Cayman Islands Monetary Authority

## FUND ADMINISTRATOR

**Vistra (Mauritius) Limited**  
Regulated by Financial Services Commission  
3rd Floor, 355 NEX, Rue du Savoir, Cybercity  
Ebene, Mauritius  
Tel.: +230 260 7275  
Fax: +230 260 7001  
Email: spc@silverdalegroup.com

## PORTFOLIO UPDATE

During the week ended 18th October 2019, we sold Jabil Inc and Macys Inc bonds while we purchased Health & Happiness (BB/-/-) and Indusind Bank (-/Baa3/-) bonds.

Health and Happiness (Mkt Cap: US\$ 2.4bn) is a leading infant milk formula provider in China. It owns leading Australian vitamin, herbal and mineral supplements provider Swisse Wellness Group Pty Ltd. As at 30th June 2019, it reported net debt of US\$ 881mn, TTM EBITDA of US\$ 340mn with Net Debt/EBITDA of 2.6x and interest coverage ratio of 6.4x

Indusind Bank (Mkt Cap: US\$ 13.1bn) is an Indian private sector bank with total assets of US\$ 34bn. They provide consumer banking and corporate banking services through its 1,938 branches. As of June 2019, it reported Net Interest Margin at 4.05% and Net Non-Performing Loans (NPL) at 1.23%. It reported capital adequacy ratio at 14.90% with Tier-1 ratio at 14.47%.

## RISK PROFILE

NAV Per Share can go up as well as down and any capital invested in the fund may be at risk. The Fund uses leverage and derivatives for hedging or as part of its investment strategy which involve additional costs and risks. For further details, please refer to the Composite PPM.

## HOW TO INVEST

Please ask your private bank/distributor to subscribe to Silverdale Bond Fund as per terms of the Composite PPM (quoting the relevant ISIN). Should you seek any support, please: Call Fund Administrator at +230 2607 275, or Fund Management Company at +65 6835 7130 or Email: spc@silverdalegroup.com

## FUND MANAGER

**Silverdale Capital Pte Ltd**

Regulated by Monetary Authority of Singapore (UEN# 200820921K)

8 Temasek Boulevard, #35-02 Suntec Tower-3, Singapore: 0389888, Tel: +65 6835 7130 Email: ir@silverdalegroup.com



## RISK FACTORS

**Interest Rate Risk:** The increase (fall) in value of fixed income securities with fall (increase) in interest rate. **Credit Risk:** The ability of the issuer to redeem the bonds (or other securities) on maturity. **Liquidity Risk:** The ability to sell a bond before its redemption. **Counterparty Risk:** The risk due to failure of the counterparty dealt with. **Country Risk:** The investment strategy is subject to the risks relating to the geographical, political, economic and social issues of the country of the Issuer, and to a lesser extent that of United States. **Leverage/Derivatives Risk:** Disproportionately large change in value of securities due to relatively small change in determinant.

## DISCLAIMER

The above commentary does not provide a complete analysis of every material fact regarding the market, industry, security, portfolio or the fund. It is not a recommendation to buy or sell any security nor an investment advice. The portfolio holdings, opinions and information may change without notice. The contents of this document, including any narrative does not constitute an offer to sell or a solicitation of any offer to buy the units or shares in Silverdale Bond Fund (or Silverdale Fund SP-1), or any other segregated portfolio or Class of Silverdale Fund SPC or any of the funds managed or advised by Silverdale Capital Pte Ltd., and is strictly for information only. Any subscription for units or shares must be made solely on the basis of the fund's private placement memorandum, class supplements, application form and appendices (together "the Composite PPM"). Past performance is not an indicator of future performance. Opinions and estimates contained in this document are subject to change without notice, and the actual results would differ from the said opinions and estimates. The Fund uses/ invests in financial derivative instruments. Please refer to the Composite PPM for Risk Factors. This document is written for the benefit of and being communicated only to Accredited Investors or Institutional Investors as defined under the Securities and Futures Act (Cap. 289) of Singapore or any similarly defined investor in any other securities legislation. The recipient should obtain opinion from independent professional adviser before making any decision based on this document. The NAV performance is computed taking: 1 month = 4 weeks, 3 months = 13 weeks, 6 months = 26 weeks, 9 months = 39 weeks, 12 months = 52 weeks, 3 years = 156 weeks and 5 years = 260 weeks. NAV prior to 8 May 2015 is based on NAV of underlying fund (Class E of Sri Silverdale Opportunities Fund). Payment of Dividend results in equivalent amount of drop in the NAV of the Fund. (\*) Growth NAV includes returns on dividend, which more accurately reflects the return earned by investor; previously, Growth NAV was aggregation of lifetime dividend paid and ex-dividend NAV, without considering return earned by investor on dividend paid. (\*\*) Assuming to be Business Day. (#) Indicative. (†) Initially launched as multi-assets fund with quarterly NAV. (1), (2), (3), (4) & (5) Based on gross investments into securities. (1) Credit Rating is based on best of the three ratings (S&P/Moodys/Fitch); Rating exposure of less than 4% has been clubbed as "Others". (4) Sector exposure of less than 5% has been clubbed as "Others". (5) Country exposure of less than 3.5% has been clubbed as "Others". (6) Gross Book is aggregation of Gross Investments and Loans (net of cash). (^^) Based on Gross Assets. Ranking source: Bloomberg's special report on Asia's Hedge Fund dated June 26, 2015; category: Multi Strategy. (††) Sharpe Ratio: Source Bloomberg.