

FUND DESCRIPTION

Silverdale Bond Fund is a diversified portfolio of primarily investment grade short duration US dollar bonds, actively managed for enhanced returns, using ring-fenced leverage.

FUND ADVANTAGES

- Quality Assets: Investment Grade (min 75%)
- Short duration (2-3 years)
- No forex risk (US dollars only)
- Enhanced returns, non-recourse leverage
- Quarterly dividend distribution

FUND INFORMATION

| | |
|-----------------------------|---|
| Fund | Silverdale Fund SP-1 |
| Fund Type | Segregated Portfolio Co |
| Domicile | Cayman Islands |
| Fund Currency | US Dollar |
| Inception Date [†] | 9 Sep 2010 |
| Weekly NAV Launch Date | 4 Oct 2013 |
| Cayman Launch Date | 8 May 2015 |
| NAV Computation | Weekly (Friday)** |
| Subscription/Redemption | Weekly (Monday)** |
| Management Fee | 0.50% p.a.^ |
| Next Quarterly Dividend | US\$ 2.10 per share [#] |
| Next Dividend Date | 27 Sep 2019 |
| Trailing 12 mth Dividend | US\$ 8.20 per share |
| Sales Registration | Singapore, Taiwan, United Kingdom and UAE |

AT A GLANCE

| | |
|------------------------------|------------------|
| Gross Investments | US\$ 449 million |
| Net Assets (AUM) | US\$ 178 million |
| Net Loan | US\$ 268 million |
| Gross Book ⁶ | US\$ 717 million |
| Investment Grade Bonds | 79.13 % |
| Number of Securities | 116 |
| Max Single Security Exposure | 2.87 % |
| Number of Countries | 21 |
| Max Single Country Exposure | 27.28 % |

SHARE CLASS AVAILABLE

| SHARE CLASS | ISIN |
|----------------------|--------------|
| Silverdale Fund SP1A | KYG8135U1076 |
| Silverdale Fund SP1B | KYG8135U1159 |
| Silverdale Fund SP1C | KYG8135U2066 |
| Silverdale Fund SP1D | KYG8135U2306 |
| Silverdale Fund SP1E | KYG8135U2488 |
| Silverdale Fund SP1F | KYG8135U2553 |
| Silverdale Fund SP1K | KYG8135U2975 |

Silverdale Bond Fund generates enhanced investor returns by clever use of asset-level leverage, while actively managing the portfolio duration. During the week ended 8th August 2019 the Fund NAV declined by 0.47% to US\$ 123.63 (previous week: US\$ 124.22), with actual portfolio yield (post-leverage) of 14.72% per annum (previous week: 15.78% p.a.), and average duration of 1.63 years (previous week: 1.65 years).

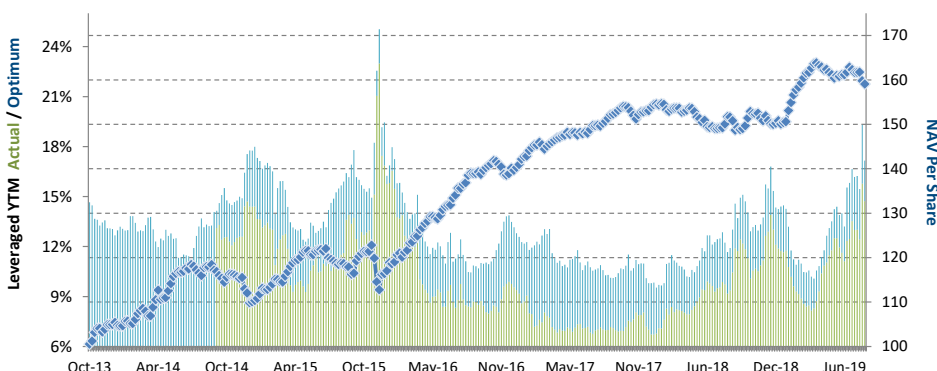
PORTFOLIO DASHBOARD

PERFORMANCE (net of fees)

| | |
|--------------------|-------------|
| Year to Date | 5.74 % |
| Trailing 1 month | -1.62 % |
| Trailing 3 months | -1.33 % |
| Trailing 12 months | 5.48 % |
| Trailing 3 years | 4.71 % p.a. |
| Trailing 5 years | 6.20 % p.a. |
| Since 4 Oct 2013 | 8.16 % p.a. |

FUND STATISTICS

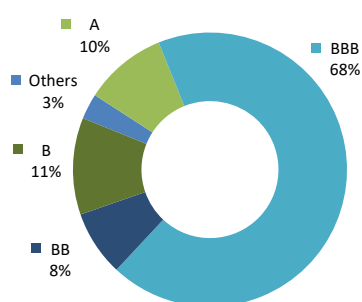
| | |
|-----------------------------|------------|
| Portfolio Yield to Maturity | 7.61 % |
| Leveraged YTM - Actual | 14.72 % |
| Leveraged YTM - Optimum | 17.15 % |
| Average Coupon | 5.44 % |
| Average Duration | 1.63 years |
| Total Dividend Paid | US\$ 31.77 |
| Sharpe Ratio (3 year) ** | 1.13 |



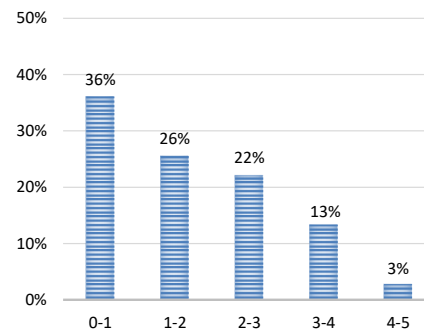
NAV and post-leverage YTM (net of fees)

| Period | Oct'13-Dec'13 | 2014 | 2015 | 2016 | 2017 | 2018 | Jul'18-Sep'18 | Oct'18-Dec'18 | Jan'19-Mar'19 | Apr'19-Jun'19 |
|--------------------|---------------|----------|----------|----------|----------|----------|---------------|---------------|---------------|---------------|
| Dividend | - | - | 4.47 | 7.30 | 7.80 | 8.00 | 2.00 | 2.00 | 2.10 | 2.10 |
| Ex-Dividend Price | 104.6428 | 110.3573 | 112.6058 | 127.9435 | 131.6822 | 120.7821 | 124.7965 | 120.7821 | 129.4537 | 126.5964 |
| Return to Investor | 4.06% | 5.46% | 6.09% | 20.10% | 9.02% | -2.20% | 2.54% | -1.61% | 8.92% | -0.58% |

Investor Return and Dividend Distributions



RATING PROFILE¹



PORTFOLIO DURATION²

FUND MANAGER

Silverdale Capital Pte Ltd

Regulated by Monetary Authority of Singapore (UEN# 200820921K)

8 Temasek Boulevard, #35-02 Suntec Tower-3, Singapore: 038988, Tel: +65 6835 7130 Email: ir@silverdalegroup.com



PLEASE REFER OVERLEAF FOR IMPORTANT DISCLOSURES & RISK FACTORS

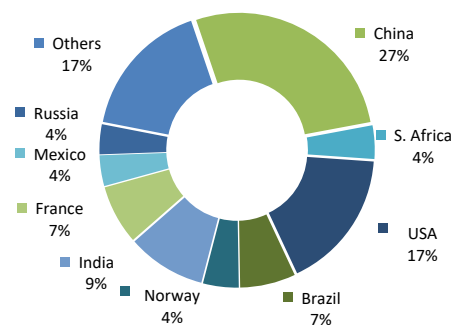
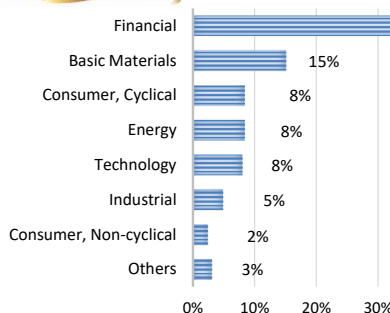


Silverdale Bond Fund

306th Weekly Factsheet as at 8th August 2019

TOP 10 HOLDINGS³

| | % age |
|---------------------------|--------|
| Dnb Bank Asa 2020 | 2.87 % |
| Citadel Lp 2022 | 2.80 % |
| Seagate Hdd 2022 | 2.76 % |
| Country Garden 2020 | 2.73 % |
| Petroleos Mexicano 2021 | 2.72 % |
| Credit Agricole 2019 | 2.67 % |
| Braskem Finance 2022 | 2.50 % |
| Türkiye Halk Bankasi 2020 | 2.36 % |
| Huarong Finance 2022 | 2.25 % |
| Chang Development 2020 | 2.16 % |



FUND MANAGEMENT DETAILS THE FUND

Silverdale Bond Fund
is the segregated portfolio-1 (SP-1) of Silverdale Fund SPC, a Cayman Islands domiciled mutual fund, registered with Cayman Islands Monetary Authority

FUND ADMINISTRATOR

Vistra (Mauritius) Limited
Regulated by Financial Services Commission
3rd Floor, 355 NEX, Rue du Savoir, Cybercity
Ebene, Mauritius
Tel.: +230 260 7275
Fax: +230 260 7001
Email: spc@silverdalegroup.com

RISK PROFILE

NAV Per Share can go up as well as down and any capital invested in the fund may be at risk. The Fund uses leverage and derivatives for hedging or as part of its investment strategy which involve additional costs and risks. For further details, please refer to the Composite PPM.

PORTFOLIO UPDATE

During the week ended 8th August 2019, we sold Gap, Pitney Bowes, and Tewoo Group bonds while we purchased Aroundtown (BBB-/-/-), Bank of Sharjah (-/-/BBB+), BNP Paribas (BBB-/Ba1/BBB-), Sino Ocean (-/Baa3/BBB-), and Sunac China (B+/B1/-) bonds.

Aroundtown SA (Mkt Cap: US\$ 9.3bn) is the largest German listed Commercial Real Estate (CRE) company with diversified real estate portfolio worth EUR 14bn. It consists of offices (43%), hotels (24%), residential (17%) and other assets (16%). The portfolio generates EUR 614mn in net annual rent. As of 31 December 2018, it reported loan to value at 35% and net interest coverage ratio at 5.1x. Yakir Gabay is the largest shareholder with 34% equity stake and the remaining is free float.

Bank of Sharjah (Mkt Cap: US\$ 500mn) which accounts for 1% of total assets in the UAE banking system provides commercial, retail and investment banking solutions in the UAE. As of 30 June 2019, it reported capital adequacy ratio at 15.9% with Tier-I ratio at 13.1%. Government of Sharjah through Sharjah Asset Management is the single largest shareholder with 17.20% equity stake.

BNP Paribas (Mkt Cap: US\$ 59bn) is the largest bank in France, with total assets of US\$ 2.6tn as of 31 Mar 2019. It offers corporate and investment banking, asset management, private banking and insurance services. The Group operates in 72 countries and has over 202,000 employees. As of March 2019, it reported CET1 ratio at 11.7%. The Government of Belgium is the largest shareholder with 7.7% equity stake.

Sino Ocean (Mkt Cap: US\$ 2.7bn) is a Chinese property developer with contracted sales of US\$ 15.7bn during 2018. As of December 2018, it reported total assets of US\$ 36.3bn, net debt of US\$ 7.2bn, and Net Debt to EBITDA of 5x. Sino Ocean is owned circa 29.6% each by China Life Insurance and Anbang Insurance Group.

Sunac China Holdings Limited (Mkt Cap: US\$ 17.7bn) is one of the largest Chinese developers with gross contracted sales of circa US\$ 70bn in 2018. The company focuses on mid-range to high-end property markets, with diversified geographical coverage across China and focus on Tier 1 and Tier 2 cities. As of Dec 2018, its gross land bank stood at 165.6mn sqm, of which 113.3mn sqm was attributable to it. As of Dec 2018, it reported total assets of US\$ 104bn, net debt to EBITDA at 7.8x and interest coverage ratio at 1.3x.

HOW TO INVEST

Please ask your private bank/distributor to subscribe to Silverdale Bond Fund as per terms of the Composite PPM (quoting the relevant ISIN). Should you seek any support, please: Call Fund Administrator at +230 2607 275, or Fund Management Company at +65 6835 7130 or Email: spc@silverdalegroup.com

FUND MANAGER

Silverdale Capital Pte Ltd

Regulated by Monetary Authority of Singapore (UEN# 200820921K)

8 Temasek Boulevard, #35-02 Suntec Tower-3, Singapore: 0389888, Tel: +65 6835 7130 Email: ir@silverdalegroup.com



RISK FACTORS

Interest Rate Risk: The increase (fall) in value of fixed income securities with fall (increase) in interest rate. **Credit Risk:** The ability of the issuer to redeem the bonds (or other securities) on maturity. **Liquidity Risk:** The ability to sell a bond before its redemption. **Counterparty Risk:** The risk due to failure of the counterparty dealt with. **Country Risk:** The investment strategy is subject to the risks relating to the geographical, political, economic and social issues of the country of the Issuer, and to a lesser extent that of United States. **Leverage/Derivatives Risk:** Disproportionately large change in value of securities due to relatively small change in determinant.

DISCLAIMER

The above commentary does not provide a complete analysis of every material fact regarding the market, industry, security, portfolio or the fund. It is not a recommendation to buy or sell any security nor an investment advice. The portfolio holdings, opinions and information may change without notice. The contents of this document, including any narrative does not constitute an offer to sell or a solicitation of any offer to buy the units or shares in Silverdale Bond Fund (or Silverdale Fund SP-1), or any other segregated portfolio or Class of Silverdale Fund SPC or any of the funds managed or advised by Silverdale Capital Pte Ltd., and is strictly for information only. Any subscription for units or shares must be made solely on the basis of the fund's private placement memorandum, class supplements, application form and appendices (together "the Composite PPM"). Past performance is not an indicator of future performance. Opinions and estimates contained in this document are subject to change without notice, and the actual results would differ from the said opinions and estimates. The Fund uses/invests in financial derivative instruments. Please refer to the Composite PPM for Risk Factors. This document is written for the benefit of and being communicated only to Accredited Investors or Institutional Investors as defined under the Securities and Futures Act (Cap. 289) of Singapore or any similarly defined investor in any other securities legislation. The recipient should obtain opinion from independent professional adviser before making any decision based on this document. The NAV performance is computed taking: 1 month = 4 weeks, 3 months = 13 weeks, 6 months = 26 weeks, 9 months = 39 weeks, 12 months = 52 weeks, 3 years = 156 weeks and 5 years = 260 weeks. NAV prior to 8 May 2015 is based on NAV of underlying fund (Class E of Sri Silverdale Opportunities Fund). Payment of Dividend results in equivalent amount of drop in the NAV of the Fund. (*) Growth NAV includes returns on dividend, which more accurately reflects the return earned by investor; previously, Growth NAV was aggregation of lifetime dividend paid and ex-dividend NAV, without considering return earned by investor on dividend paid. (**) Assuming to be Business Day. (#) Indicative. (†) Initially launched as multi-assets fund with quarterly NAV. (1), (2), (3), (4) & (5) Based on gross investments into securities. (1) Credit Rating is based on best of the three ratings (S&P/Moodys/Fitch); Rating exposure of less than 4% has been clubbed as "Others". (4) Sector exposure of less than 5% has been clubbed as "Others". (5) Country exposure of less than 3.5% has been clubbed as "Others". (6) Gross Book is aggregation of Gross Investments and Loans (net of cash). (^^) Based on Gross Assets. Ranking source: Bloomberg's special report on Asia's Hedge Fund dated June 26, 2015; category: Multi Strategy. (††) Sharpe Ratio: Source Bloomberg.