

Silverdale Bond Fund

Weekly Factsheet as at 16th November 2018

FUND DESCRIPTION

Silverdale Bond Fund is a diversified portfolio of primarily investment grade short duration US dollar bonds, actively managed for enhanced returns, using ring-fenced leverage.

FUND ADVANTAGES

- Quality Assets: Investment Grade (min 75%)
- Short duration (2-3 years)
- No forex risk (US dollars only)
- Enhanced returns, non-recourse leverage
- Quarterly dividend distribution

FUND INFORMATION

Fund	Silverdale Fund SP-1
Fund Type	Segregated Portfolio Co
Domicile	Cayman Islands
Fund Currency	US Dollar
Inception Date [†]	9 Sep 2010
Weekly NAV Launch Date	4 Oct 2013
Cayman Launch Date	8 May 2015
NAV Computation	Weekly (Friday)
Subscription/Redemption	Weekly (Monday)
Management Fee	0.50% p.a. ^{^^}
Next Quarterly Dividend	US\$ 2.00 per share [#]
Next Dividend Date	28 Dec 2018
Trailing 12 mth Dividend	US\$ 8.00 per share
Sales Registration	Singapore, Taiwan, UAE, and United Kingdom

AT A GLANCE

Gross Assets	US\$ 440 million
Net Assets	US\$ 153 million
Investment Grade Bonds	78.03 %
Number of Securities	121
Max single security exposure	3.33 %
Number of Countries	20
Max single country exposure	23.18 %

SHARE CLASS AVAILABLE

SHARE CLASS	ISIN
Silverdale Fund SP1A	KYG8135U1076
Silverdale Fund SP1B	KYG8135U1159
Silverdale Fund SP1C	KYG8135U2066
Silverdale Fund SP1D	KYG8135U2306
Silverdale Fund SP1E	KYG8135U2488
Silverdale Fund SP1F	KYG8135U2553

Silverdale Bond Fund generates enhanced investor returns by clever use of asset-level leverage, while actively managing the portfolio duration. During the week ended 16th November 2018, the Fund NAV declined by 0.67% to 123.15 (previous week: US\$ 123.98), with actual portfolio yield (post-leverage) of 12.89% per annum (previous week: 12.63% p.a.), and average duration of 1.74 years (previous week: 1.76 years).

PORTFOLIO DASHBOARD

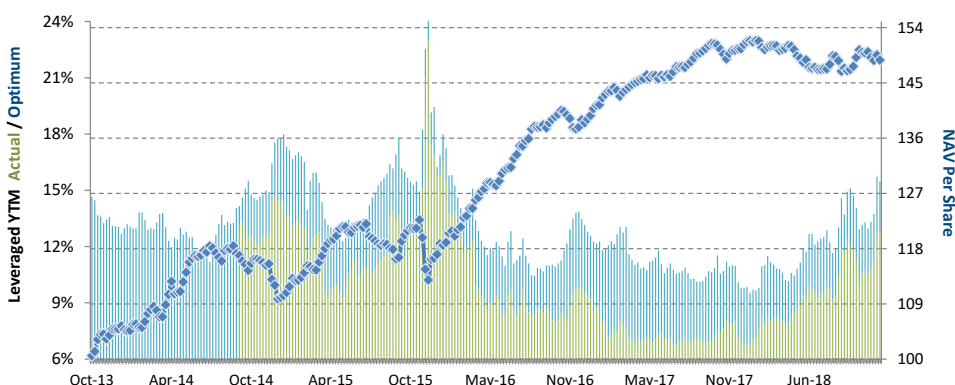
Growth NAV US\$ 148.7263 Ex-Dividend NAV US\$ 123.1532

PERFORMANCE (net of fees)

Year to Date	-1.9205 %
Trailing 1 month	-1.0683 %
Trailing 3 months	1.4864 %
Trailing 12 months	-0.1523 %
Trailing 3 years	6.76% p.a.
Trailing 5 years	7.23% p.a.
Since 4 Oct 2013	7.94% p.a.

FUND STATISTICS

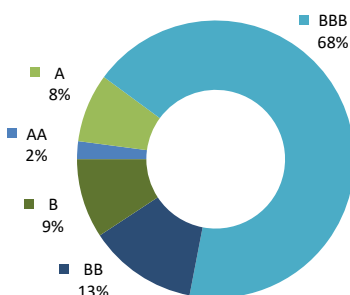
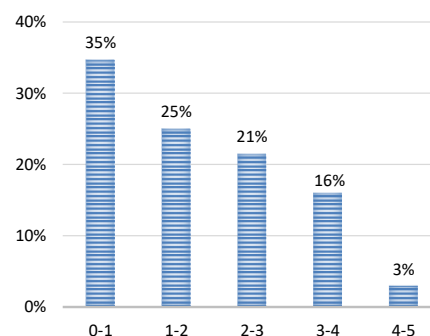
Portfolio Yield to Maturity	6.37 %
Leveraged YTM - Actual	12.89 %
Leveraged YTM - Optimum	15.48 %
Average Coupon	5.12 %
Average Duration	1.74 years
Total Dividend Paid	US\$ 25.57
Sharpe Ratio (3 year) ^{††}	1.36



NAV and post-leverage YTM (net of fees)

Period	Oct'13-Dec'13	2014	2015	2016	2017	Oct'17-Dec'17	Jan'18-Mar'18	Apr'18-Jun'18	Jul'18-Sep'18
Dividend	-	-	4.47	7.30	7.80	2.00	2.00	2.00	2.00
Ex-Dividend Price	104.6428	110.3573	112.6058	127.9435	131.6822	131.6822	128.9304	123.6521	124.7965
Return to Investor	4.06%	5.46%	6.09%	20.10%	9.02%	0.47%	-0.57%	-2.54%	2.54%

Investor Return and Dividend Distributions

RATING PROFILE¹PORTFOLIO DURATION²

FUND MANAGER

Silverdale Capital Pte Ltd

Regulated by Monetary Authority of Singapore (UEN# 200820921K)

8 Temasek Boulevard, #35-02 Suntec Tower-3, Singapore: 038988, Tel: +65 6835 7130 Email: ir@silverdalegroup.com



PLEASE REFER OVERLEAF FOR IMPORTANT DISCLOSURES & RISK FACTORS



Silverdale Bond Fund

Weekly Factsheet as at 16th November 2018

TOP 10 HOLDINGS³

	% age
Pttep Treasury 2019	3.33 %
Credit Agricole 2019	2.96 %
Seagate Hdd 2022	2.64 %
Braskem Finance 2022	2.43 %
Vedanta Resources 2021	2.16 %
Tewoo Group 2019	2.15 %
Tc Ziraat Bankasi 2019	2.13 %
Gerdau Trade Inc 2023	2.12 %
Qnb Finance Ltd 2021	2.08 %
Prospect Capital 2023	1.89 %

FUND MANAGEMENT DETAILS
THE FUND

Silverdale Bond Fund

is the segregated portfolio-1 (SP-1) of Silverdale Fund SPC, a Cayman Islands domiciled mutual fund, registered with Cayman Islands Monetary Authority

FUND ADMINISTRATOR

Vistra (Mauritius) Limited

Regulated by Financial Services Commission
3rd Floor, 355 NEX, Rue du Savoir, Cybercity
Ebene, Mauritius

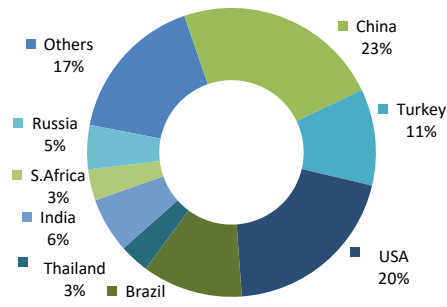
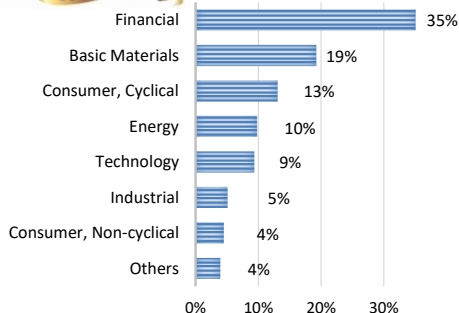
Tel.: +230 260 7275

Fax: +230 464 3290

Email: spc@silverdalegroup.com

RISK PROFILE

NAV Per Share can go up as well as down and any capital invested in the fund may be at risk. The Fund uses leverage and derivatives for hedging or as part of its investment strategy which involve additional costs and risks. For further details, please refer to the Composite PPM.



PORTFOLIO UPDATE

During the week ended 16 Nov 2018, we purchased DNB Bank (BBB-/Baa3/-), Credit Agricole (BBB-/Ba1/BBB-), Gold Field (BB+/Baa3/-), Huarong (BBB+/Baa1/A), Petroleo Mexicano (BBB+/Baa3/BBB+), Turkiye Halk Bankasi (-/B2/B+) and UBS (BBB+/-/A-) bonds. Further we reduced overall exposure to eHi (BB-/B+) while switching to longer dated paper.

DNB ASA (Mkt Cap: US\$ 28.7bn) is Norway's largest financial services group with total assets of US\$ 330bn. As of September 2018, it reported net non-performing and doubtful loans at 1.64%. Further, it reported Common Equity Tier-1 Capital ratio at 16.5% and Total Capital Ratio at 20%. The two largest shareholders of DNB are the Norwegian Government (34%) and DNB Savings Bank Foundation (8%).

Credit Agricole S.A. (Mkt Cap: US\$ 35.7bn) is the largest lender in France with total assets of US\$ 1.9tn. As of September 2018, it reported impaired loans ratio at 3% with NPL coverage ratio at 74.9%. It reported capital adequacy ratio at 17.7%, Tier-I ratio at 13.7%, and CET1 ratio at 11.5%. Credit Agricole Group owns 56% stake of Credit Agricole S.A. through SAS Rue La Boétie.

Gold Fields (Mkt Cap: US\$ 2.4bn) is the 7th largest gold producer in the world with annual production of 2 Moz. It is based out of South Africa (13% of production) but has major operations in Australia (42%), Ghana (32%) and Peru (13%). As of June 2018, it reported TTM EBITDA of US\$ 1.3bn, net debt of US\$ 1.4bn, net debt to EBITDA of 1.1x, and interest coverage of 13x.

China Huarong Asset Management (Mkt Cap: US\$ 8bn) is the largest financial asset management company in China with total assets of US\$ 278bn across (i) Distressed Assets Management (50%), (ii) Financial Services (30%), and (iii) Asset Management & Investments (20%). Chinese Government through Ministry of Finance is the largest shareholder with 63.36% stake.

Petroleos Mexicanos (Pemex) is Mexico's state-owned integrated oil company with operations in oil & gas exploration, production, distribution, as well as petrochemicals. It produces 2.6mn barrels equivalent per day. As of September 2018 it reported total assets of US\$ 110bn, EBITDA of US\$ 28bn, net debt of US\$ 101bn, net leverage of 3.6x, and interest coverage of 4.9x.

Turkiye Halk Bankasi (Mkt Cap: US\$ 1.7bn) is a Turkish bank majority owned by Turkish Government (51.1% equity stake). As of September 2018, it had total assets worth US\$ 65.3bn. It reported Net Interest Margin at 2.9% and Non-Performing Loans (NPL) at 2.7% with NPL coverage of 78.7%. It reported capital adequacy ratio at 14.9% with Tier-I ratio at 11.4%.

UBS (Mkt Cap: US\$ 52.5bn) is the largest Swiss bank with a global presence in over 50 countries and over 60,000 employees. As of September 2018, it reported total assets worth ~US\$ 955bn and book value of equity of ~US\$ 52.4bn. It reported common equity Tier-1 Capital ratio at 13.5% and Total Capital Ratio at 17.9%.

HOW TO INVEST

Please ask your private bank/distributor to subscribe to Silverdale Bond Fund as per terms of the Composite PPM (quoting the relevant ISIN).

Should you seek any support, please: Call Fund Administrator at +230 2607 275, or Fund Management Company at +65 6835 7130

or Email: spc@silverdalegroup.com

FUND MANAGER

Silverdale Capital Pte Ltd

Regulated by Monetary Authority of Singapore (UEN# 200820921K)

8 Temasek Boulevard, #35-02 Suntec Tower-3, Singapore: 038988, Tel: +65 6835 7130 Email: ir@silverdalegroup.com



RISK FACTORS

Interest Rate Risk: The increase (fall) in value of fixed income securities with fall (increase) in interest rate. **Credit Risk:** The ability of the issuer to redeem the bonds (or other securities) on maturity. **Liquidity Risk:** The ability to sell a bond before its redemption. **Counterparty Risk:** The risk due to failure of the counterparty dealt with. **Country Risk:** The investment strategy is subject to the risks relating to the geographical, political, economic and social issues of the country of the Issuer, and to a lesser extent that of United States. **Leverage/Derivatives Risk:** Disproportionately large change in value of securities due to relatively small change in determinant.

DISCLAIMER

The above commentary does not provide a complete analysis of every material fact regarding the market, industry, security, portfolio or the fund. It is not a recommendation to buy or sell any security nor an investment advice. The portfolio holdings, opinions and information may change without notice. The contents of this document, including any narrative does not constitute an offer to sell or a solicitation of any offer to buy the units or shares in Silverdale Bond Fund (or Silverdale Fund SP-1), or any other segregated portfolio or Class of Silverdale Fund SPC or any of the funds managed or advised by Silverdale Capital Pte Ltd., and is strictly for information only. Any subscription for units or shares must be made solely on the basis of the fund's private placement memorandum, class supplements, application form and appendices (together "the Composite PPM"). Past performance is not an indicator of future performance. Opinions and estimates contained in this document are subject to change without notice, and the actual results would differ from the said opinions and estimates. The Fund uses/ invests in financial derivative instruments. Please refer to the Composite PPM for Risk Factors. This document is written for the benefit of and being communicated only to Accredited Investors or Institutional Investors as defined under the Securities and Futures Act (Cap. 289) of Singapore or any similarly defined investor in any other securities legislation. The recipient should obtain opinion from independent professional adviser before making any decision based on this document. The NAV performance is computed taking: 1 month = 4 weeks, 3 months = 13 weeks, 6 months = 26 weeks, 9 months = 39 weeks, 12 months = 52 weeks, 3 years = 156 weeks and 5 years = 260 weeks. NAV prior to 8 May 2015 is based on NAV of underlying fund (Class E of Sri Silverdale Opportunities Fund). Payment of Dividend results in equivalent amount of drop in the NAV of the Fund. (*) Assuming to be Business Day. (#) Indicative. (†) Initially launched as multi-assets fund with quarterly NAV. (1), (2), (3), (4) & (5) Based on gross investments into securities. (1) Credit Rating is based on best of the three ratings (S&P/Moodys/Fitch). (4) Sector exposure of less than 5% has been clubbed as 'Others'. (5) Country exposure of less than 3.5% has been clubbed as 'Others'. (**) Based on Gross Assets. Ranking source: Bloomberg's special report on Asia's Hedge Fund dated June 26, 2015; category: Multi Strategy. (††) Sharpe Ratio: Source Bloomberg.