



## Silverdale Bond Fund

INVESTMENT GRADE | SHORT DURATION | ENHANCED RETURNS

616th Factsheet as at 29th August 2025

### FUND DESCRIPTION

Silverdale Bond Fund is a diversified portfolio of primarily investment grade US dollar bonds, actively managed for enhanced returns.

### FUND ADVANTAGES

- Quality Assets: Investment Grade
- Short duration: 2-3 years
- Currency Exposure: US dollars
- Strategy: Enhanced returns
- Leverage: Non-recourse to investors
- Stable Dividends: Quarterly payout
- Fund Tax Status: Zero tax on investment income

### FUND INFORMATION

Fund	Silverdale Bond Fund
ACRA Regn. No.	T20VC0123D-SF002
MAS SRS No.	21CFOV10013
Umbrella Fund	Silverdale Fund VCC
Domicile	Singapore
Fund Currency	US Dollar
Strategy Launch Date <sup>7</sup>	9 Sep 2010
Weekly NAV Launch Dt	4 Oct 2013
VCC Sub Fund Launch	1 Feb 2021
Fund Age <sup>14</sup>	15 years
Management Fee	0.75% p.a.
NAV Frequency	Weekly (Friday) <sup>8</sup>
Subscription/Redemption	Weekly (Monday) <sup>8</sup>
Total Dividend Paid (life time)	US\$ 72 million
Previous Quarterly Dividend	US\$ 2.00 per share
Next Dividend Record Date	26 Sep 2025 <sup>10</sup>
Next Quarterly Dividend	US\$ 2.00 per share <sup>10</sup>

### AT A GLANCE

Net Assets (AUM)	US\$ 85 million
Net Loan	US\$ 143 million
Gross Investments <sup>6</sup>	US\$ 228 million
Investment Grade Bonds	75 %
Number of Securities	149
Max Single Security Exposure	1.86 %
Number of Countries	26
Max Single Country Exposure	18 %

### SHARE CLASS AVAILABLE

#### SHARE CLASS

Accumulation	SGXZ66077579
Distribution	SGXZ84696368
Institutional (Acc)	SGXZ79922928
Institutional (Dist)	SGXZ76188929
Accumulation III	SGXZ95348165
Distribution III	SGXZ10242964
Accumulation V	SGXZ65114738
Distribution V	SGXZ56141039
Distribution K	SGXZ52285178

Bloomberg (Dist)	SILV01C SP Equity
Bloomberg (Acc)	SILV01H SP Equity

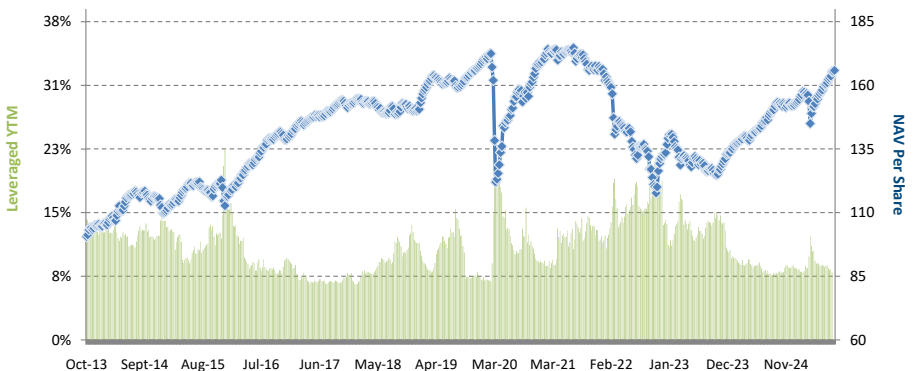
### PORTFOLIO DASHBOARD

#### PERFORMANCE (net of fees and expenses)

Year to Date	9.12 %
Trailing 1 month (4 weeks)	1.76 %
Trailing 3 months (13 weeks)	6.28 %
Trailing 12 months (52 weeks)	10.68 %
Trailing 3 years (Cumulative: 22.79%)	7.08 % p.a.
Trailing 5 years (Cumulative: 4.79%)	0.94 % p.a.
Trailing 10 years (Cumulative: 40.53%)	3.46 % p.a.
Since 4 Oct 2013 (Cumulative: 64.94%)	4.29 % p.a.

### FUND STATISTICS

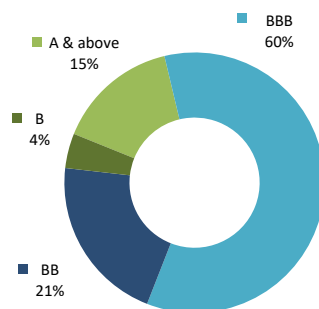
Portfolio Yield to Maturity <sup>12</sup>	5.92 %
Leveraged Yield to Maturity	8.32 %
Average Coupon	5.86 %
Average Duration	2.08 years
<b>DIVIDEND</b>	
Last quarter	US\$ 2.00
Trailing 12 months	US\$ 8.30
Since 4 Oct 2013	US\$ 82.07



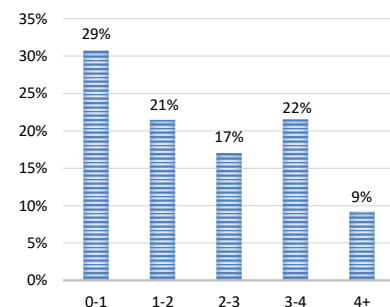
### NAV and LEVERAGED YTM

Period	2013 <sup>11</sup>	2014	2015	2016	2017	2018	2019	2020	2021	2022	2023	2024
Dividend Paid	-	-	4.47	7.30	7.80	8.00	8.40	8.40	8.40	8.40	8.40	8.40
Return to Investor	4.06%	5.46%	6.08%	20.42%	9.16%	-2.24%	11.97%	0.00%	-1.26%	-19.72%	0.07%	13.75%
Dividend Yield <sup>13</sup>			3.97%	5.71%	5.92%	6.62%	6.63%	7.17%	7.81%	10.77%	12.09%	11.95%

### INVESTOR RETURN and DIVIDEND DISTRIBUTIONS



### RATING PROFILE<sup>1</sup>



### PORTFOLIO DURATION<sup>2</sup>

### FUND MANAGER

#### Silverdale Capital Pte Ltd

Licensed and regulated by Monetary Authority of Singapore (UEN# 200820921K)

8 Temasek Boulevard, #35-02 Suntec Tower-3, Singapore: 038988 ■ Tel: +65 6835 7130 ■ Email: ir@silverdalegroup.com



PLEASE REFER OVERLEAF FOR IMPORTANT DISCLOSURES &amp; RISK FACTORS

Silverdale Capital  
2008 - 2025

## Silverdale Bond Fund

INVESTMENT GRADE | SHORT DURATION | ENHANCED RETURNS

616th Factsheet as at 29th August 2025

TOP 10 HOLDINGS<sup>3</sup>

	% age
Manappuram Finan 2027	1.86 %
Ca Magnum Holdin 2026	1.81 %
Petroleos Mexica 2026	1.80 %
Citadel Lp 2026	1.70 %
Standard Charter 2030	1.37 %
Adani Ports And 2027	1.28 %
Bbva Bancomer Sa 2029	1.24 %
Vivo Energy Inve 2027	1.22 %
Scentre Group Tr 2031	1.19 %
Barclays Plc 2030	1.17 %

## FUND MANAGEMENT DETAILS

## THE FUND

## Silverdale Bond Fund

is the Sub-Fund of Silverdale Fund VCC, (UEN # T20VC0123D) which is established as an umbrella fund under the Variable Capital Companies Act of Singapore.

## CUSTODIAN / PRIME BROKERS

Standard Chartered Bank (Singapore) Ltd  
DBS Bank Ltd, Singapore  
UBS AG, Singapore Branch  
Bank Julius Baer, Singapore Branch  
Nomura Singapore Limited  
HSBC Limited

## FUND ADMINISTRATOR

## NAV Fund Services (Singapore) Private Limited

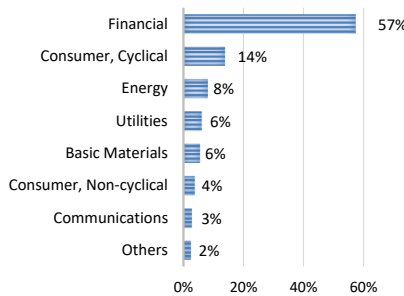
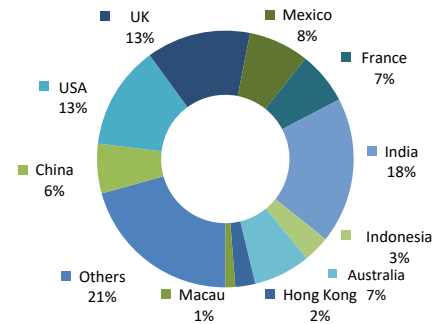
9 Raffles Place, #26-01 Republic Plaza  
Singapore 048619

Tel.: +65 6856 7605

Email: VCC@SilverdaleGroup.com

## RISK PROFILE

NAV per share will fluctuate, and any capital invested is subject to risk, including loss of the principal amount invested. The Fund uses leverage and derivatives for both hedging and investment purposes, which amplify the returns, including loss (if any) and entail additional costs, volatility, and counterparty risks. Please refer to the Offering Documents for further details.

SECTORAL EXPOSURE<sup>4</sup>GEOGRAPHICAL EXPOSURE<sup>5</sup>

## PORTFOLIO UPDATE

During the month ended August 2025, Silverdale Bond Fund has bought Adani Electricity, Adani Ports, Allianz, LG Energy Solution, Pemex, Samman Capital, Saudi Awwal Bank and We Soda bonds while it sold Medco, Meiji Yasuda, Nippon Life, Sumitomo Mitsui bonds. It also received proceeds from call of UBS Group bonds.

The increase in the fund NAV was due to American, Indian, and British credits. Sectorially, Financial, Consumer Cyclical and Energy sectors were the key positive contributors.

Silverdale Bond Fund continues to be positioned conservatively, with 75% of its portfolio being high quality Investment Grade bonds with a short duration of 2.08 years, yet it has leveraged YTM of 8.32% pointing towards potential higher returns in the coming months.

## MARKET UPDATE

Headline inflation has eased sharply from 9.1% in mid-2022 to 2.7% in July 2025, led by cooling housing costs even as tariffs start to lift goods prices. Labor markets are softening, with July payrolls up just 73k, the weakest since 2021, pulling the 3-month average down to 35k from 168k in 2024. Immigration curbs have lowered breakeven job growth below 50k, keeping unemployment steady at 4.2%. Political uncertainty has increased but still, US growth remains resilient with the GDPNow forecasting Q3 at 3.5%, supported by consumption and AI-driven investment.

At Jackson Hole, Chair Powell acknowledged labor fragility, noting GDP growth slowed to 1.2% in H1 — half of last year's pace. While tariffs may lift prices, he stressed these are transitory, with the bigger risk being a sharp rise in layoffs and unemployment. Against this backdrop, Powell signaled potential rate cuts, with markets pricing in up to two by year-end. This has reinforced the case for fixed income, particularly short-to-intermediate maturities offering the best risk-reward. The "smart money" has already moved: global bond funds have seen record inflows of \$700bn year-to-date, including \$97bn in the past four weeks alone, putting 2025 on track for an unprecedented year of allocations into fixed income.

For further details, please refer to Silverdale Monthly Commentary August 2025.

## HOW TO INVEST

Please ask your private bank/distributor to subscribe to Silverdale Bond Fund as per terms of the Offering Documents (quoting the relevant ISIN). Should you seek any support, please: email Fund Administrator at [VCC@SilverdaleGroup.com](mailto:VCC@SilverdaleGroup.com), or Fund Manager at [IR@SilverdaleGroup.com](mailto:IR@SilverdaleGroup.com)

## FUND MANAGER

## Silverdale Capital Pte Ltd

Licensed and regulated by Monetary Authority of Singapore (UEN# 200820921K)

8 Temasek Boulevard, #35-02 Suntec Tower-3, Singapore: 038988

Tel: +65 6835 7130 • Email: [IR@SilverdaleGroup.com](mailto:IR@SilverdaleGroup.com)



Visit our Website



## RISK FACTORS

**Interest Rate Risk:** The increase (fall) in value of fixed income securities with fall (increase) in interest rate. **Credit Risk:** The ability of the issuer to redeem the securities on maturity. **Liquidity Risk:** The ability to sell a bond before its redemption. **Counterparty Risk:** The risk due to failure of the counterparty dealt with. **Country Risk:** The investment strategy is subject to the risks relating to the geographical, political, economic and social issues of the country of the issuer, and to a lesser extent that of USA. **Leverage/Derivatives Risk:** Disproportionately large change in value of securities due to relatively small change in determinant.

## DISCLAIMER

The above commentary does not provide a complete analysis of every material fact regarding the market, industry, security, portfolio or the fund. It is not a recommendation to buy or sell any security nor an investment advice. The portfolio holdings, opinions and information may change without notice. The contents of this document, including any narrative does not constitute an offer to sell or a solicitation of any offer to buy the units or shares in Silverdale Bond Fund, or any other fund managed or advised by Silverdale Capital Pte Ltd., and is strictly for information only. Any subscription for units or shares must be made solely on the basis of Silverdale Bond Fund's Offering Documents (that is, the Constitution, Private Placement Memorandum, and Subscription Forms of Silverdale Fund VCC, and Sub-Fund Supplement of Silverdale Bond Fund). Past performance is not an indicator of future performance. Opinions and estimates contained in this document are subject to change without notice, and the actual results would differ from the said opinions and estimates. The Fund uses/ invests in financial derivative instruments. Please refer to the Offering Documents for Risk Factors. This document is written for the benefit of and being communicated only to Accredited Investors or Institutional Investors as defined under the Securities and Futures Act (Cap. 289) of Singapore. The recipient should obtain opinion from independent professional adviser before making any decision based on this document. The NAV performance is computed taking: 1 month = 4 weeks, 3 months = 13 weeks, 6 months = 26 weeks, 9 months = 39 weeks, 12 months = 52 weeks, 3 years = 156 weeks and 5 years = 260 weeks; where attributable NAV is not available, the latest available NAV is taken for computation. NAV prior to 8 May 2015 is based on NAV of Sri Silverdale Opportunities Fund (Class-E); and NAV for the period 8 May 2015 to 23 April 2021 is that of Silverdale Fund SPC SP-1 managed by the same fund management team without change in strategy. Payment of Dividend results in equivalent amount of drop in the NAV of the Fund. (1), (2), (3), (4) & (5) are based on gross investments into securities. (1) Credit Rating is based on best of the three ratings (S&P/Moodys/Fitch); Rating exposure of less than 3% has been clubbed as "Others"; unless otherwise specified. (4) Sector exposure of less than 3% has been clubbed as "Others"; unless otherwise specified. (5) Country exposure of less than 3% has been clubbed as "Others"; unless otherwise specified. (6) Gross Investments is aggregation of AUM and Net Loans and cash on hand. (7) Initially launched as multi-assets fund with quarterly NAV. (8) Assuming to be a Business Day. (10) Indicative. (11) For the period 4 Oct 2013 to 27 Dec 2013. (12) Portfolio Yield to Maturity is weighted average of total return on bonds held till maturity, derived from interest coupons and capital appreciation / depreciation based on their expected redemption values; it excludes bonds trading less than 20 cents to a dollar, while it reflects the current yield of the bonds for (a) the bonds trading between 20-50 cents to a dollar and (b) the bonds maturing within 1 month and trading higher than 98 cents to a dollar. (13) Dividend Yield (%) = (Amount per share / Ex-Dividend NAV) x 4 (envisaged dividend frequency). (14) Since Strategy launch date. Ranking source: Bloomberg's special report on Asia's Hedge Fund dated June 26, 2015; category: Multi Strategy.